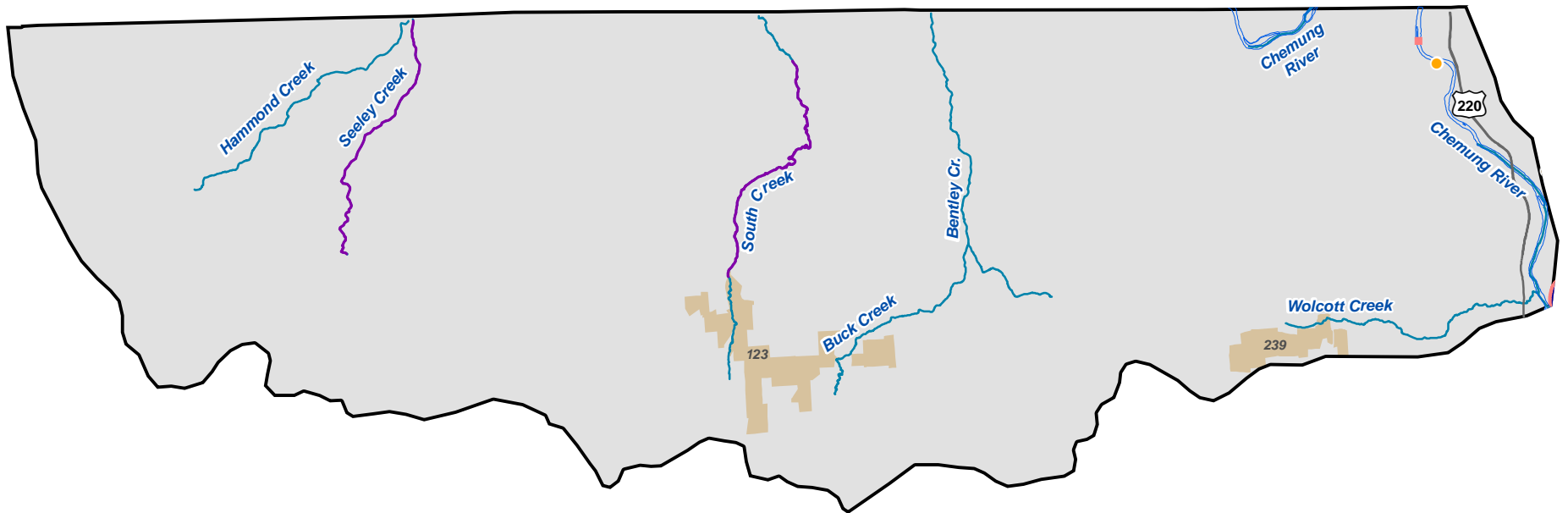
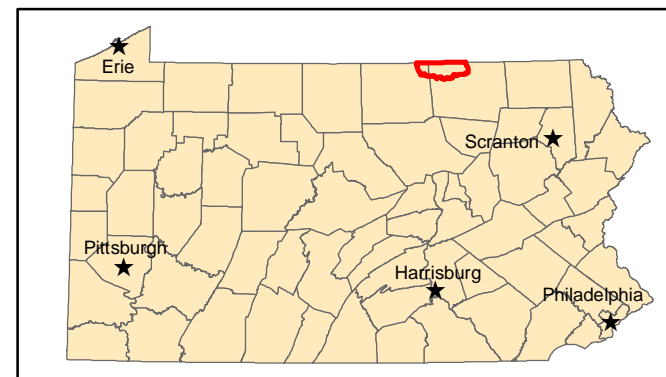


MAP 73. Pennsylvania Fishing and Boating Access Strategy Chemung Watershed



- | | |
|-----------------------------------|--------------------------|
| Habitat Projects - Lakes | 2009 Trout Stocked Water |
| Habitat Projects - Flowing Waters | Water Trails |
| Boating Access Grant Location | Improvement Locations |
| Existing Accesses | Borough |
| 2009 WW/CW Stocked Lakes | City |
| 2009 Trout Stocked Lakes | State Parks |
| Fish Passage Projects | State Forest |
| 2009 WW/CW Stocked Water | State Gamelands |



Watershed: Chemung

PFBC Region: Northeast

Priority: 52

General Description: Located in Bradford County, the watershed encompasses 117,084 acres. The Chemung River is the major waterway in the watershed. A small stretch of the North Branch Susquehanna Water Trail adjoins the eastern boundary line of the watershed. Stocked streams in the watershed are Seeley Creek and South Creek.

Stakeholder Input: Additional access was recommended for the Chemung River from Tozers Landing to the New York border.

CRITERIA	Evaluation Result	SCORE	Fishing Access	Boating Access
Linear Miles Stocked	10.37	1	1	
Number Stocked Lakes	0	0		0
Number BFG	0	0	0	0
Number Fish Passage/Habitat Projects	0	0	0	
Water Trail/River Conservation Plan (RCP)	Water Trail	1	1	1
Number Access Improvements Identified by Stakeholders	1	1	1	1
Total Population	12,935	1	1	1
Population Change	0.05	1	1	1
Species Special Concern Density Per Square Mile	0.00	0	0	0
Percent Public Land	1.911	1	1	1
Number Access/10Miles of Stream Order > <u>3</u>	0.245	1	1	
Current Number Fish Licenses	958	1	1	
Current Number Boat Registrants	409	1	0	1
Current Fish Licensees - Percent of Total Population	7.41	3	3	
Current Boat Registrants - Percent of Total Population	3.16	3		3
WW/CW Linear Miles Stocked	0	0	0	
WW/CW Trout Stocked Lakes	0	0	0	0
Number Accesses/10 miles of Stream Order > <u>5</u>	0	0	0	0
Total Score		15	11	9
Bonus- Funding Available		0	0	0
Final Score		15	11	9