

Conodoguinet Creek Water Trail

Map & Guide

Water trails are recreational waterways on a lake, river, or ocean between specific points, containing access points and day-use and/or camping sites for the boating public. Water trails emphasize low-impact use and promote stewardship of the resources. Explore this unique Pennsylvania water trail.

For your safety and enjoyment:

- **Always wear a life jacket.**
- **Obtain proper instruction in boating skills.**
- **Know fishing and boating regulations.**
- **Be prepared for river hazards.**
- **Carry proper equipment.**

PENNSYLVANIA WATER TRAIL PROGRAM

Long before airports, highways or even trains, Pennsylvania's streams, rivers and lakes provided a means of transportation for native inhabitants. As European explorers ventured into "Penn's Woods," these waters became important trading routes. Later, as demand for logs, coal and other goods soared, the Commonwealth's waterways became commercial highways. Today, you can travel these same routes, enjoying the state's natural resources while getting glimpses of rich history and tradition on an official Pennsylvania water trail.

In 2004, the Pennsylvania Fish & Boat Commission designated the Conodoguinet Creek Water Trail an official Pennsylvania water trail. The goal of the Conodoguinet Creek Water Trail is to highlight existing public recreation facilities and to encourage stewardship and recreation of the creek.

THE HERITAGE OF THE CONODOGUINET

Early pioneers envisioned the waters of the Conodoguinet as an avenue of commerce linking the Susquehanna and Potomac rivers. Plans for a canal joining the headwaters of the Conodoguinet with the headwaters of the Conococheague Creek never materialized. However, the Conodoguinet was far from abandoned.

The Conodoguinet Creek powered many mills. The mills of Cumberland County were the small industrial centers of their time. Besides grain, cider, nails and wood, these mills refined diverse products such as sumac leaves, which were made into tanning and dyeing materials. Distilleries were also located at a number of these sites. In 1840, the Conodoguinet Creek provided the power for more than 140 mills throughout the county. But by 1909, only 13 mills remained, and today the industry is largely forgotten.

Today, the Conodoguinet Creek is most valued for its water resources and recreational opportunities. Communities in the eastern part of the Cumberland Valley pump millions of gallons per day from the creek to meet residential, commercial and industrial water demand. Much of the water returns to the stream, but not before passing through one of several treatment plants in the basin.

On a typical summer day, one can also find avid canoeists and anglers enjoying the creek's ribbon of greenery, alive with herons, kingfishers and other streamside creatures. Osprey and eagles may also be seen over the stream. In winter, after prolonged periods of cold, the creek's waters freeze and give the Conodoguinet an idyllic Currier-and-Ives picture-postcard beauty.

CONODOGUINET CREEK WATER TRAIL

The Conodoguinet Creek originates in Horse Valley, Franklin County, next to Kittatinny Mountain at an elevation of 1,680 feet. From there, the Conodoguinet flows through the fertile Cumberland Valley and joins the Susquehanna River near Harrisburg.

The Conodoguinet Creek is approximately 90 miles long and drains 540 square miles of diverse lands. Forested areas cover the upland basin, giving way to intense agriculture throughout the valley. Much of the Conodoguinet Creek watershed still has a strong agricultural flavor, including numerous cozy villages and small towns. While farming remains a prominent land use in the western part of the valley, dramatic growth in the Carlisle to Camp Hill area has converted much agricultural land to residential and commercial uses. The Conodoguinet meanders toward the suburban west shore of Harrisburg through a series of elaborate bends and loops. "Conodoguinet" comes from an Indian word meaning "a long way with many bends."

PENNSYLVANIA BOATING REGULATIONS

- One wearable, Coast Guard-approved personal flotation device (PFD or life jacket) in serviceable condition and of the appropriate size is required for each person in your boat. If your boat is 16 feet or longer, one throwable device (seat cushion or ring buoy) is required. Canoes and kayaks, regardless of length, are not required to carry a throwable device.
- Life jackets must be worn by all children 12 years old and younger on all boats 20 feet or less in length while under way, and on all canoes and kayaks. Others are strongly encouraged to wear a PFD at all times on the water.
- All boats must display an anchor light (a white light visible 360 degrees) when at anchor between sunset and sunrise. Boats can use a lantern or clip-on battery-powered unit to meet this requirement.
- All powered boats must show running lights between sunset and sunrise. Between sunset and sunrise, unpowered boats must carry a white light (visible 360 degrees), installed or portable, ready to be displayed in time to avoid a collision.
- All motorboats are required to carry a sound-producing mechanical device audible for a half-mile. Athletic whistles meet this requirement.
- All motorboats must be registered, regardless of where they launch.
- Unpowered boats (canoes, kayaks, rowboats, rafts) using Pennsylvania Fish & Boat Commission access areas must either be registered OR display a valid launch permit. Launch permits can be purchased on the web at www.fish.state.pa.us. Click the "Outdoor Shop" icon.
- Operating watercraft, including canoes, kayaks, and rafts, under the influence of alcohol or drugs is illegal. The law is strongly enforced for user safety. For further information on boating regulations, contact the Pennsylvania Fish & Boat Commission at www.fish.state.pa.us.

PADDLING SAFETY TIPS

- **Wear your life jacket.** Some 80 percent of all recreational boating fatalities happen to people who are not wearing a life jacket.
- **Expect to get wet.** Even the best paddlers sometimes capsize or swamp their boats. Bring extra clothing in a waterproof bag.
- **Be prepared to swim.** If the water looks too hazardous to swim in, don't go paddling.
- **If you capsize,** hold on to your boat, unless it presents a life-threatening situation. If floating in current, position yourself on the upstream side of the capsized boat.
- **Scout ahead whenever possible.** Know the river. Avoid surprises.
- **Be prepared for the weather.** Get a forecast before you go. Sudden winds and rain are common and can turn a pleasant trip into a risky, unpleasant venture.

- **Wear wading shoes** or tennis shoes with wool, polypropylene, pile or neoprene socks.
- **Never take your boat over a low-head dam.**
- **Portage** (carry) your boat around any section of water about which you feel uncertain.
- **Never boat alone.** Boating safety increases with numbers.
- **Keep painter lines** (ropes tied to the bow) and any other roped coiled and secured.
- **Never tie a rope to yourself** or to another paddler, especially a child.
- **Kneel to increase your stability** before entering rougher water, like a rapid.
- **If you collide with an obstruction, lean toward it.** This will usually prevent your capsizing or flooding the boat.
- **File a float plan** with a reliable person, indicating where you are going and when you will return. Remember to contact the person when you have returned safely.

FISHING THE CONODOGUINET

Regulations and fishing

Each year the Pennsylvania Fish & Boat Commission publishes the *Summary of Fishing Regulations and Laws*. Before planning a fishing outing, refer to this guide. The summary is available online at www.fish.state.pa.us or at local license-issuing agents.

All persons age 16 and over must obtain a license to fish or angle for any fish species and to take fishbait, baitfish, frogs and turtles from Commonwealth waters. Casting and/or retrieving, whether by rod, reel and line, or by handline, for oneself or another person, requires a current license unless specifically exempted by law. While fishing, the license must be clearly displayed to allow waterways conservation officers to verify quickly and easily that anglers are legally licensed. Anglers are also required to carry another means of positive identification, such as a valid driver's license, to establish their identity if requested by a waterways conservation officer.

Fishing the Conodoguinet Creek between Carlisle and Harrisburg offers a wide variety of opportunities. Smallmouth bass, rock bass and sunfish are the most common gamefish found in the creek. Avoid the stream's shallow, flat sections with little overhead cover. These areas will offer few legal-sized fish. Deeper pools and glides are more conducive to larger fish, and smallmouth bass of 16 or 18 inches may occasionally be found in these types of areas. The more debris and structure you find in the creek, the better your odds are for good fishing. The Pennsylvania Fish & Boat Commission also stocks tiger muskellunge fingerlings in the creek. Muskellunge, known as the "fish of a thousand casts," may not be plentiful, but anglers targeting cold tributary mouths during the summer may hook a big one if they are lucky. During cold periods, anglers who drift large minnows below a bobber in deep pools have better odds of hooking a musky than do those casting artificial lures.

Tourism Information



Cumberland Valley
Visitors Bureau

Online: www.visitcumberlandvalley.com

Phone: 1-888-513-5130

Visitors Center: 18 North Hanover Street, Carlisle, PA

STEWARDSHIP OF THE CONODOGUINET

Interested in becoming more involved in environmental issues that confront the Conodoguinet Creek watershed?

The Conodoguinet Creek Watershed Association (CCWA) is a non-profit, environmentally concerned citizens group created to take appropriate action on matters that affect the creek watershed. The CCWA wishes to protect the historical significance and natural character of its 90-mile (144 km) length at this time of a changing environment and of development pressures. The association realizes that what happens on the 540-square-mile watershed of the creek affects the creek itself.

CCWA works with and supports federal, state and local authorities in developing programs for the protection and enhancement of the watershed. The CCWA is concerned with the well-being of the land and the people living on it, as well as the flora and fauna that depend on the Conodoguinet Creek. To learn more about CCWA, visit the association online at: www.conocreek.org.

Emergency Information

Fire, Police & Medical Assistance

Emergency 911

Non-Emergency Calls

Carlisle Area (717) 243-4121

West Shore Area (717) 238-9676

Carlisle Regional Medical Center

45 Sprint Drive
Carlisle, PA
(717) 249-1212

Seidle Hospital

120 S. Filbert St.
Mechanicsburg, PA
(717) 782-3131

Holy Spirit Hospital

503 N. 21st St.
Camp Hill, PA
(717) 763-2100

“LEAVE NO TRACES” PRINCIPLES

Pennsylvania water trails embrace the “Leave No Trace” code of outdoor ethics that promotes the responsible use and enjoyment of the outdoors.

Plan and prepare

- Know the regulations and special concerns for the area.
- Prepare for extreme weather, hazards and emergencies.
- Schedule your trip to avoid times of high use.
- Use a map and compass to eliminate the use of marking paint or flagging.

Dispose of waste properly

- Repackage food to minimize waste.
- Pack it in, pack it out. Pack out all trash, leftover food and litter.
- Deposit solid human waste in catholes dug 6 to 8 inches deep at least 200 feet from water, camps and trails. Cover and disguise the cathole when finished.

Leave what you find

- Preserve the past: Examine, but do not touch, cultural or historic structures and artifacts.
- Leave rocks, plants and other natural objects as you find them.
- Avoid introducing or transporting non-native species.
- Do not build structures or furniture, and do not dig trenches.

Respect wildlife

- Observe wildlife from a distance. Do not follow or approach wildlife.
- Never feed animals. Feeding wildlife damages their health, alters natural behaviors and exposes them to predators and other dangers.
- Control pets at all times, or leave them at home.
- Avoid wildlife during sensitive times: When they are mating, nesting or raising young, or during winter.

Be considerate of other visitors

- Respect other visitors and protect the quality of their experience.
- Be courteous. Yield to other users on the trail.
- Let nature’s sounds prevail. Avoid loud voices and music.

For more information about the Leave No Trace principles, visit www.LNT.org or call 1-800-332-4100. The Leave No Trace Center for Outdoor Ethics is a national non-profit organization dedicated to promoting and inspiring responsible outdoor recreation through education, research and partnerships.

STREAM CONDITIONS

The Conodoguinet Creek is designated a Class 1 stream on the International Whitewater Rating System. A Class 1 stream is characterized by easy moving water with a few riffles and small waves, suitable for a beginner.

Be sure to check stream conditions just before embarking on a float trip. Water levels change frequently, sometimes drastically! The U.S. Geological Survey monitors current water conditions from selected surface water sites and publishes the data for the public. To check water levels on the Conodoguinet Creek, visit the U.S. Geological Survey online for real-time data at <http://waterdata.usgs.gov/pa/nwis/uv?01570000>. You can also contact the Central PA Forecast Office in State College at (814) 234-3861 for stream conditions. Refer to station #01570000, Hogestown.

The U.S. Geological Survey gage height near Hogestown should read over 1.7 feet to navigate the stream successfully. The best stream flow conditions generally occur between November and April. The Conodoguinet Creek is usually canoeable throughout March and April and into mid-May. In a wet year, stream conditions may remain favorable through July. Flood stage on the Conodoguinet Creek is 8 feet.

HAZARDS ON THE WATER

Dams: Water going over a dam creates a back current, or undertow, that can pull a boat into the turbulence and capsize it. This hydraulic can often trap and hold a person or a boat. Hazards include the areas above and below the dam. Paddlers can spot dams by looking downriver for a horizontal line across the water.

Strainers: Trees are typical strainers that can trap and flood boats. Water flows through these obstructions, but solid objects do not. Strainers can pin victims underwater.

Current: Never underestimate the power of moving water. Boaters who are not sure that their boat or their ability is up to the prevailing conditions should stay off the water.

Cold water: Sudden immersion in cold water can lead to cardiac arrest or can cause a person to inhale water. If you fall into cold water, immediately cover your mouth and nose with your hands. Dress properly for the cold by wearing a hat, several layers of clothing and warm boots. Wool, pile and polypropylene provide warmth even when wet. Avoid cotton fabrics.

Hypothermia: Hypothermia is the lowering of the body’s core temperature. It begins with shivering. Judgment then becomes clouded and unconsciousness sets in. Death can occur if hypothermia is not treated. Remove a hypothermic person from the water and replace wet clothes with warm, dry clothing and/or a blanket. Do not massage the extremities or give the victim alcohol or caffeine.

Heat exhaustion/sunburn: When it is hot, wear sunglasses, a hat, and lightweight, light-colored clothing. Apply sunblock with a high SPF rating and drink lots of fluids.

Other boaters: Be aware of other boaters. Keep a sharp lookout to prevent collisions and conflicts.

Acknowledgements

This guide was prepared by the Cumberland County Planning Commission on behalf of the Cumberland County Board of Commissioners:

Bruce Barclay, *Chairman*
Gary Eichelberger, *Vice-Chairman*
Rick Rovegno, *Secretary*

Great effort was expended collecting and verifying the information in this publication. However, we realize that conditions change on our waterways, and that some of the information may not be accurate. Users noting errors or omissions on this map are urged to report them. Questions, comments or errors regarding the trail guide should be directed to:

Cumberland County Planning Commission

18 North Hanover Street, Suite 102

Carlisle, PA 17013

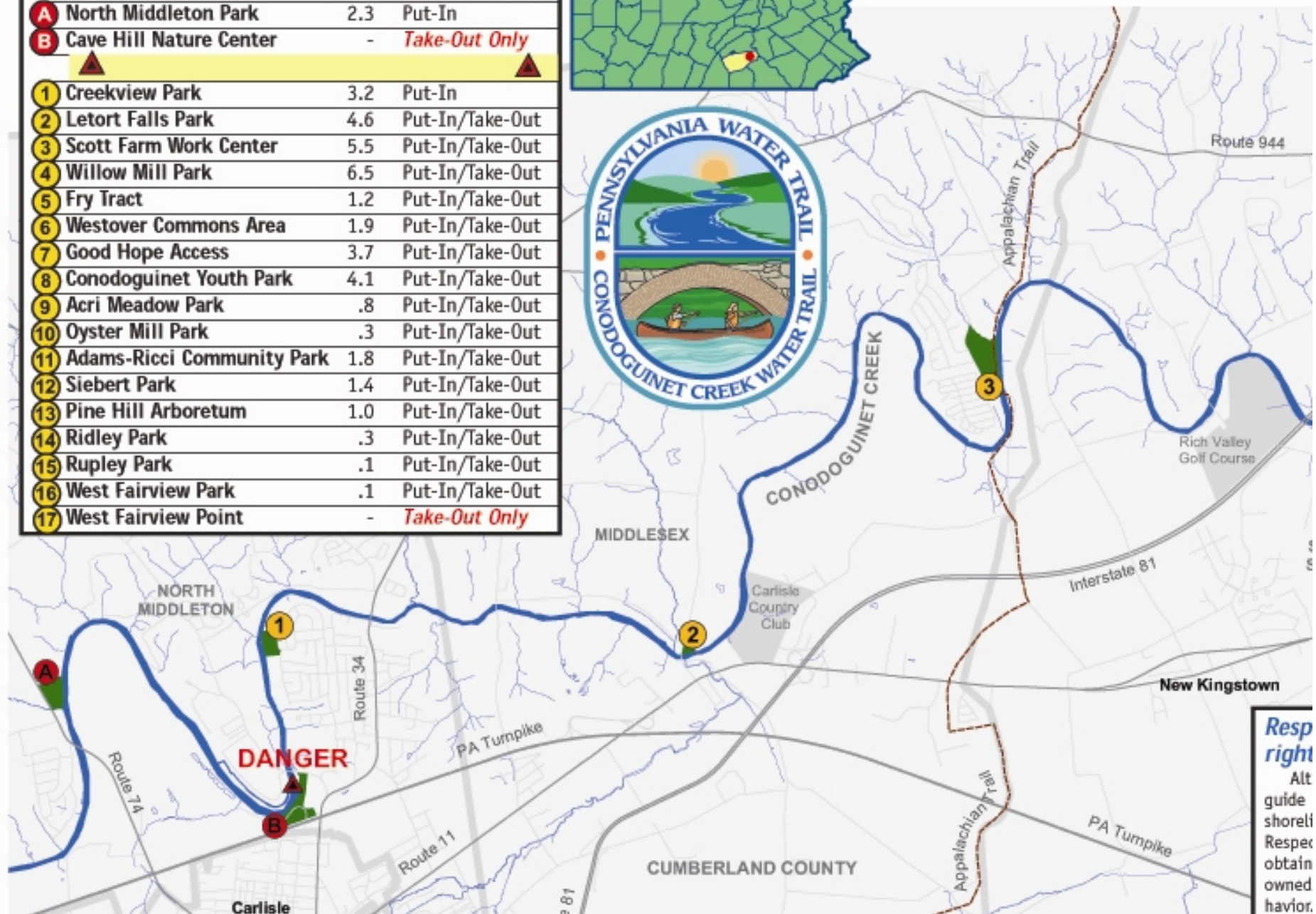
www.ccpa.net

planning@ccpa.net

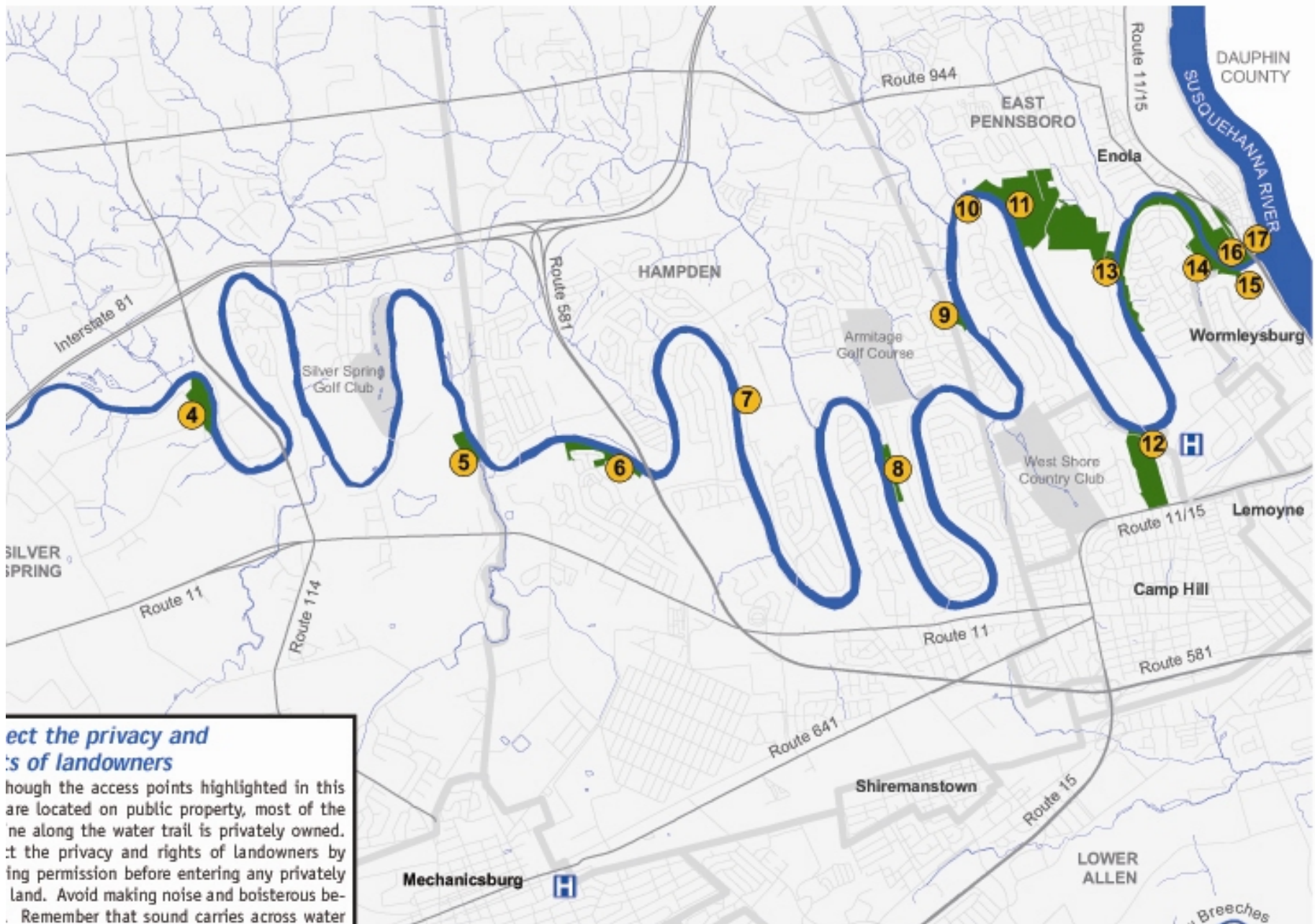
Cumberland County wishes to thank and recognize the many partners who provided assistance and/or funding for this project:

Pennsylvania Fish & Boat Commission
Pennsylvania Department of Conservation & Natural Resources
Cumberland County Open Space Preservation Steering Committee
Conodoguinet Creek Watershed Association
East Pennsboro Township
North Middleton Township
Silver Spring Township
Wormleysburg Borough
Camp Hill Borough
Carlisle Borough
Hampden Township
Middlesex Township

Accesses	Distance to Next Access Point	Type of Access
A North Middleton Park	2.3	Put-In
B Cave Hill Nature Center	-	Take-Out Only
▲		
1 Creekview Park	3.2	Put-In
2 Letort Falls Park	4.6	Put-In/Take-Out
3 Scott Farm Work Center	5.5	Put-In/Take-Out
4 Willow Mill Park	6.5	Put-In/Take-Out
5 Fry Tract	1.2	Put-In/Take-Out
6 Westover Commons Area	1.9	Put-In/Take-Out
7 Good Hope Access	3.7	Put-In/Take-Out
8 Conodoguinet Youth Park	4.1	Put-In/Take-Out
9 Acri Meadow Park	.8	Put-In/Take-Out
10 Oyster Mill Park	.3	Put-In/Take-Out
11 Adams-Ricci Community Park	1.8	Put-In/Take-Out
12 Siebert Park	1.4	Put-In/Take-Out
13 Pine Hill Arboretum	1.0	Put-In/Take-Out
14 Ridley Park	.3	Put-In/Take-Out
15 Rupley Park	.1	Put-In/Take-Out
16 West Fairview Park	.1	Put-In/Take-Out
17 West Fairview Point	-	Take-Out Only



Respect right
 Alt
 guide
 shorel
 Respec
 obtain
 owned
 havior.



Protect the privacy and rights of landowners

Although the access points highlighted in this map are located on public property, most of the shoreline along the water trail is privately owned. Respect the privacy and rights of landowners by asking permission before entering any privately owned land. Avoid making noise and boisterous behavior. Remember that sound carries across water.



much l
ers en
decks
that yc
ing is

Access Points

The Conodoguinet Creek Water Trail guide provides park and recreation information for approximately 40 miles of the Conodoguinet Creek. The trail begins near Carlisle at North Middleton Park and ends at "The Point" in West Fairview, where the creek flows into the Susquehanna River.

This guide outlines two float trips: One short route, labeled A-B, west of the Carlisle Dam, and a second extended route, labeled 1-17, east of the Carlisle Dam. There is no portage at the Carlisle Dam. **Do not attempt to navigate over the dam!**

A North Middleton Park

North Middleton Park is a 15-acre facility owned by North Middleton Township. The park provides opportunities for boating, fishing and picnicking, as well as baseball, basketball and volleyball. A playground and pavilion are also available. Ample parking and a paved launch ramp (unpowered boats only) allow for easy access to the creek. This park is located off PA Route 74 (1700 Waggoner's Gap Road), approximately 3 miles north of Carlisle. For more information, contact North Middleton Township at (717) 243-8550, or visit the township online at www.northmiddleton-township.org.

B Cave Hill Nature Center (take-out only)

Cave Hill is a 20-acre nature area owned by Carlisle Borough. The park is located on Cave Hill Drive, off K Street. It offers walk-in creek access, hiking, fishing and an unpaved parking area. All boaters must take out at this site. Cave Hill is not a put-in point because it is just upstream from the Carlisle Raw Water Intake Dam. Do not attempt to navigate over the dam! For more information, contact Carlisle Borough at (717) 249-4422, or visit the borough online at www.carlislepa.org.

1 Creekview Park

Creekview Park is a neighborhood park located in North Middleton Township off Douglas Drive and Mary Lane. This 10-acre park offers walk-in creek access, fishing, a multipurpose field, playground equipment and a picnic pavilion. No off-street parking is available. For more information, contact North Middleton Township at (717) 243-8550, or visit the township online at www.northmiddleton-township.org.

2 Letort Falls Park

The 2-acre park is located along North Middlesex Road and is currently undeveloped. Future improvements of the site may include parking and creek front access for fishing and boating. For more information, contact Middlesex Township at (717) 249-4409 or visit the township online at www.middlesextownship.com.

3 Scott Farm Work Center/Appalachian Trail

Scott Farm is a trailhead and work center for the Appalachian National Scenic Trail. This site is located along Bernheisel Bridge Road and owned by the National Park Service. Creek access is permitted on the south side of the bridge. Parking is limited; users must contact the Appalachian Trail Conservancy to determine parking availability. Driving and parking on the grass are strictly prohibited. There are no sanitary facilities and users must pack out all trash. For more information, contact the Appalachian Trail Conservancy at (717) 258-5771, 9 a.m. to 5 p.m. Monday through Friday.

4 Willow Mill Park

Willow Mill Park is an 18-acre municipal park owned by Silver Spring Township. The park is located on Willow Mill Park Road, off PA Route 114. The park offers convenient canoe access to the creek, hiking, fishing, picnic pavilions and ample parking. Portable toilets are also available.

Houston Mill, located in Willow Mill Park, has been a local landmark since the late 1790s. For more information, contact Silver Spring Township at (717) 766-0178.

5 Fry Tract

The Fry Tract is a 9-acre park owned by Silver Spring Township, located off Millfording Road. The park offers convenient creek access, fishing, soccer fields, portable toilets and ample parking. The park also offers a walking path along the creek. For more information, contact Silver Spring Township at (717) 766-0178.

6 Westover Commons Area

Westover Commons is a 10-acre passive park located in the Westover subdivision of Hampden Township. This area is completely undeveloped and provides a great area for walking along the creek, bird watching, bank fishing and other passive leisure uses. For more information, contact Hampden Township at (717) 761-4951, or visit the township online at www.twp.hampden.pa.us.

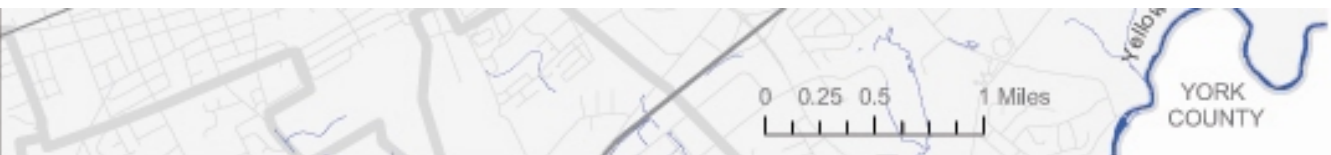
7 Good Hope Access

Good Hope Access is owned and maintained by the Pennsylvania Fish & Boat Commission. This access is located in Hampden Township off Sporting Hill Road. The site provides convenient creek access for boaters (no powerboats permitted). Shore fishing is permitted. Limited parking is available at the site. For information on other Pennsylvania Fish & Boat Commission facilities, visit www.fish.state.pa.us.

8 Conodoguinet Youth Park

The Conodoguinet Youth Park is an 8-acre municipal park, owned by Hampden Township, located off Orr's Bridge Road. Hampden Township and the Mechanicsburg North Rotary Club have worked cooperatively to plan, develop and construct the improvements in this creekside park. The park offers off-street parking, public restrooms, a picnic pavilion and a fishing dock. Picnic tables and fire

ouder than it carries on land. Many landowners enjoy the creek's peace and solitude from their and living rooms. Share the same courtesy you would want. A friendly wave or quiet greet-always welcome!



rings are available and are among some of the Eagle Scout projects that have been completed at this site. Overnight camping is permitted by certain organized groups by reservation only. For more information, contact Hampden Township at (717) 761-4951, or visit the township online at www.twp.hampden.pa.us.

9 Acri Meadow Park

This site is a 4-acre municipal park owned by East Pennsboro Township. The park is located at Acri and Meadow roads. The park offers a launch ramp for unpowered boats, fishing, picnicking and a pavilion. Other available activities include baseball, basketball, volleyball and a playground. For more information, contact East Pennsboro Township at (717) 732-0711, or visit the township online at www.eastpennsboro.net.

10 Oyster Mill Park

Oyster Mill Park is a 1-acre park owned by East Pennsboro Township along Oyster Mill Road. It provides convenient creek access, picnicking and fishing. Limited parking is available. For more information, contact East Pennsboro Township at (717) 732-0711, or visit the township online at www.eastpennsboro.net.

11 Adams-Ricci Community Park

This 130-acre municipal park is owned by East Pennsboro Township. The park is located at Magaro Road and East Penn Drive. Adams-Ricci offers a variety of recreational amenities and pavilion rentals. Recommended parking for creek access is near the West Enola Pavilion or the Keystone Pavilion. Walk-in access to the creek is provided via a steep nature trail. For more information, contact East Pennsboro Township at (717) 732-0711, or visit the township online at www.eastpennsboro.net.

12 Siebert Park

Siebert Park is a 60-acre municipal park owned by Camp Hill Borough. The park features an arboretum, pavilions,

hiking and biking. It also offers a playground, basketball, tennis, an athletic field, a running track, a swimming pool and volleyball. Access to the creek and parking for boaters is provided along Creek Road at the lower end of the park. For more information, contact Camp Hill Borough at (717) 737-3456, or visit the borough online at www.camphill-pa.org.

13 Pine Hill Arboretum

Pine Hill is a 15-acre arboretum located in East Pennsboro Township. The arboretum extends from the bank of the Conodoguinet Creek across Creekside Drive and up the hill to Humer Street. This unique site provides opportunities for nature exploration, hiking, boating and fishing. Access to the creek is by walk-in only. Parking is limited to a small unpaved area along Creekside Drive.

Pine Hill was originally the summer home of local medical doctor Harvey B. Bashore. Following Bashore's death, the arboretum was deeded to the Harrisburg Natural History Society, where the property was used for meetings, picnics and field trips. For more information, contact East Pennsboro Township at (717) 732-0711, or visit the township online at www.eastpennsboro.net.

14 Ridley Park

This site is a 16-acre park owned by East Pennsboro Township. The facility is located at Erford and Matthew roads. Ridley Park provides creek access, hiking, fishing and a pavilion. Other available activities include baseball, basketball, volleyball and playground equipment. For more information, contact East Pennsboro Township at (717) 732-0711, or visit the township online at www.eastpennsboro.net.

15 Rupley Park

Rupley Park is an 11-acre neighborhood park owned and maintained by Wormleysburg Borough. The en-

trance to the park is located along West Crestwood Drive. Facilities in Upper Rupley Park include playground equipment, picnic tables and a small pavilion. Lower Rupley Park is more primitive and provides opportunities for hiking, fishing and boating. Access to the creek is by walk-in only. No off-street parking is available. For more information, contact Wormleysburg Borough at (717) 763-4483, or visit the borough online at <http://borough.wormleysburg.pa.us>.

16 West Fairview Park

West Fairview Park is a 24-acre municipal park owned by East Pennsboro Township. The entrance to the park is located at 4th and McCormick streets. Park amenities include a baseball field, basketball courts, playground equipment, picnic tables and opportunities for fishing, hiking and boating. Access to the creek is by walk-in only.

The remains of an old mill can be found at West Fairview Park. West Fairview Park still includes some of the arches and foundation of the old mill, which was dismantled in the early 1900s. For more information, contact East Pennsboro Township at (717) 732-0711, or visit the township online at www.eastpennsboro.net.

17 West Fairview Point (take-out only)

Known by the locals as "The Point," this site provides a paved boat launch at the confluence of the Conodoguinet Creek and the Susquehanna River. The area is located at Front and South streets in West Fairview and is maintained by East Pennsboro Township. Portable toilets and picnic tables are provided, but parking is limited. For more information, contact East Pennsboro Township at (717) 732-0711, or visit the township online at www.eastpennsboro.net.