

YOUR INVITATION TO FISHING AND BOATING FUN

On behalf of the Pennsylvania Fish & Boat Commission (PFBC), welcome to our Commonwealth's waters! Pennsylvania is fortunate to have over 86,000 miles of streams and rivers and over 150,000 acres of lakes and reservoirs that provide an abundance of year-round fishing and boating opportunities. We are happy to offer you this guide to help you find a place to enjoy our Commonwealth's waters and create your next memory.

Here at the Commission, our mission is "Resource First." Our philosophy recognizes that healthy watersheds serve as the building blocks for excellent fishing and boating opportunities. Please do your part to protect, conserve and enhance our resources by picking up litter, reporting pollution, minimizing the spread of aquatic invasive species, and being courteous to other anglers and boaters and anyone who lets you fish and boat on their private property. After all, our aquatic resources are the common property of all the people and the PFBC serves as the caretaker of those resources to insure that they can be enjoyed not only today but also by generations yet to come (Article 1, Section 27 PA Constitution).

Before you hit the water, be sure to visit [www.fishandboat.com](http://www.fishandboat.com) to buy your fishing license, register your boat, purchase a launch permit, view current rules and regulations, and learn more about the latest fishing and boating news and information. Also, feel free to drop us a line at [TheFishingHole.com](http://TheFishingHole.com) on our website to let us know how we are doing and what we could do to serve you better. Better yet, tell us about your fishing and boating hotspot or share a story about your recent trip.

Please remember to wear your life jacket to stay safe, take a friend or a family member fishing, and do your part to maintain Pennsylvania's incredible aquatic resources and fishing and boating heritage. And most of all, remember to relax and have fun! I hope to see you on the water.



Download the free FishBoatPA app. Details inside!

PA's Fishing & Boating Opportunities



Counties: Butler, Clarion, Crawford, Erie, Forest, Lawrence, Mercer, Venango, Warren

[www.fishandboat.com](http://www.fishandboat.com)

The mission of the Pennsylvania Fish & Boat Commission is to protect, conserve and enhance the Commonwealth's aquatic resources and provide fishing and boating opportunities.

PENNSYLVANIA FISH & BOAT COMMISSION  
P.O. Box 67000  
Harrisburg, PA 17106-7000  
8 a.m.-4 p.m. weekdays  
Phone: (717) 705-7800

Northwest Region Law Enforcement Office  
11528 State Highway 98  
Meadville, PA 16335  
8 a.m.-4 p.m. weekdays  
Phone: (814) 337-0444  
FAX: (814) 337-0579

REPORTING WATER POLLUTION

If you see anything suspected to be a pollution or disturbance of any waterway, report it immediately by calling the region office or the Pennsylvania Department of Environmental Protection at 1-800-541-2050 (24 hours a day, 7 days a week).

FREE MOBILE APP! FishBoatPA  
Use your smartphone (with a QR code app) and the QR code below to access this web page.

- This app includes:
- Fishing and Boating Regulations
  - Near Me Mapping Feature
  - Trout Stocking Information
  - Fish Identification Tool
  - Trophy Case

Requires data access for some features. <http://www.fishandboat.com/mobile.htm>



Water trails are recreational waterways on a lake, river or ocean between specific points, containing access points and day-use and/or camping sites for the boating public. Water trails emphasize low-impact use and promote resource stewardship. The Pennsylvania Fish & Boat Commission (PFBC) and its water trail partners invite you to explore these unique Pennsylvania water trails. As you paddle or row, always remember to "Wear It!"

PENNSYLVANIA WATER TRAIL PROGRAM

Long before airports, highways or even trains, Pennsylvania's streams, rivers and lakes provided a means of transportation for native inhabitants. As European explorers ventured into "Penn's Woods," these waters became important trading routes. Later, as demand for logs, coal and other goods soared, the Commonwealth's waterways became commercial highways. Today, you can travel these same routes, enjoying the state's natural resources while getting glimpses of rich history and tradition on an official Pennsylvania water trail. As you paddle or row, always remember to "Wear It!"

PENNSYLVANIA BOATING REGULATIONS

- One wearable, Coast Guard-approved life jacket (personal flotation device or PFD) in serviceable condition and of the appropriate size is required for each person in your boat. If your life is 16 feet or longer, one throwable device (seat cushion or ring buoy) is required. Canoes and kayaks, regardless of length, are not required to carry a throwable device.
- Life jackets must be worn by all children 12 years old and younger on all boats 20 feet or less in length while under way, as well as on all canoes and kayaks. Others are strongly encouraged to wear a life jacket at all times on the water.
- Boaters are required by law to wear a life jacket on boats less than 16 feet in length or any canoe or kayak during the cold weather months from November 1 through April 30.
- All boats must display an anchor light (a white light visible at 360 degrees) when at anchor between sunset and sunrise. Boats can use a lantern or clip-on battery-powered unit to meet this requirement.
- All powered boats must show running lights between sunset and sunrise. Between sunset and sunrise, unpowered boats must carry a white light (visible at 360 degrees), installed or portable, ready to be displayed in time to avoid a collision.
- Motorboats less than 65 feet in length must carry some mechanical means of making a sound signal. Athletic whistles meet this requirement.
- All motorboats must be registered, regardless of where they launch.
- Unpowered boats (canoes, kayaks, rowboats, rafts) using Pennsylvania Fish & Boat Commission or Pennsylvania state parks or forests access areas must either be registered OR display a valid launch permit. Launch permits can be purchased on the web at [www.fishandboat.com](http://www.fishandboat.com).
- Operating watercraft, including canoes, kayaks and rafts, under the influence of alcohol or drugs is illegal. The law is strictly enforced for user safety. For further information on boating regulations, contact the Pennsylvania Fish & Boat Commission at [www.fishandboat.com](http://www.fishandboat.com).

PADDLING SAFETY TIPS

- Wear your life jacket.** Some 80 percent of all recreational boating fatalities happen to people who are not wearing a life jacket.
- Expect to get wet.** Even the best paddlers sometimes capsize or swamp their boats. Bring extra clothing in a waterproof bag.
- Be prepared to swim.** If the water looks too hazardous to swim, don't go paddling.
- If you capsize, hold on to your boat,** unless it presents a life-threatening situation. If floating in current, position yourself on the upstream side of the capsized boat.
- Be courteous to other boaters and anglers on the stream.** Scout ahead whenever possible. Know the stream. Avoid surprises.
- Be prepared for the weather.** Get a forecast before you go. Sudden winds and rain are common and can turn a pleasant trip into a risky, unpleasant venture.
- Wear wading shoes or tennis shoes with wool, polypropylene, pile or neoprene soles.**
- Never take your boat near, or go over, a low-head dam.** Dams are drowning machines and are dangerous to approach from upstream and downstream.
- Portage (carry) your boat around any section of water about which you feel uncertain.**
- Never boat alone.** Boating safety increases with numbers.
- Keep painter lines (ropes tied to the bow) and any other ropes coiled and secured.**
- Never tie a rope to yourself or to another paddler, especially a child.**
- Kneel to increase your stability before entering rougher water, like a rapid.**
- If you collide with an obstruction, lean toward it.** This will usually prevent your capsizing or flooding the boat.
- File a float plan with a reliable person,** indicating where you are going and when you will return. Remember to contact the person when you have returned safely.

LAUNCH PERMITS

Owners of unpowered boats (canoes, kayaks, stand-up paddleboards, rowboats, etc.) can launch their boats at PFBC lakes and access areas or at Pennsylvania state parks or forests. Fish launch permits display a PFBC launch use permit, boat registration, or Pennsylvania State Parks launch permit or mooring permit. Pennsylvania State Parks recognizes boat registrations and Commission launch permits. The Commission does NOT recognize launch permits from other states. A PFBC launch permit can be purchased on the Commission's website. An unpowered boat may have a registration OR launch permit but is not required to have both.

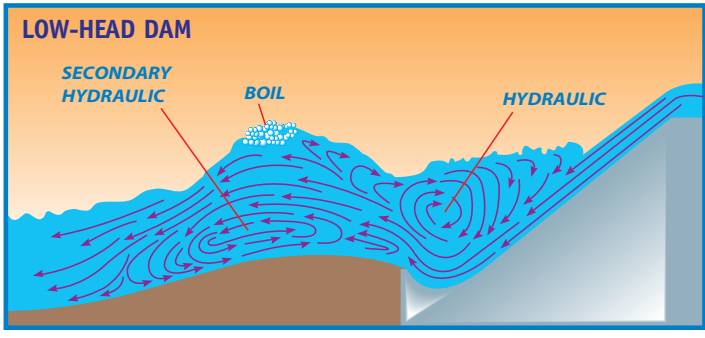
WHO MUST WEAR A LIFE JACKET?

- All water skiers and anyone towed behind vessels, personal watercraft operators and passengers and sailboarders (wind surfers). Inflatable life jackets are not acceptable for these activities.
- Children 12 years of age and younger on Commonwealth waterways when underway in any boat 20 feet or less in length and in all canoes and kayaks.
- On Pittsburgh District U.S. Army Corps of Engineers lakes (only), everyone in boats under 16 feet and in all canoes and kayaks.
- Everyone on boats less than 16 feet in length or any canoe or kayak during the cold weather months from November 1 through April 30.

Life jackets should be personalized, properly fitted and tested. Everyone should know how to use them. Always wear your life jacket.

HAZARDS ON THE WATER

**Dams:** Water going over a dam creates a back current, or undertow, that can pull a boat into the turbulence and capsize it. This hydraulic can often trap and hold a person or a boat. Hazards include the areas above and below the dam. Paddlers can spot dams by looking downstream for a horizontal line across the water.



**Current:** Never underestimate the power of moving water. Boaters who are not sure that their boat or their ability is up to the prevailing conditions should stay off the water.

**Strainers:** Trees are typical strainers that can trap and flood boats. Water flows through these obstructions, but solid objects do not. Strainers can pin victims underwater.

**Cold water:** Sudden immersion in cold water can lead to cardiac arrest or can cause a person to inhale water. If you fall into cold water, immediately cover your mouth and nose with your hands. Dress properly for the cold by wearing a hat, several layers of clothing and warm boots. Wool, pile and polypropylene provide warmth even when wet. Avoid cotton fabrics.

**Hypothermia:** Hypothermia is the lowering of the body's core temperature. It begins with shivering. Judgment then becomes clouded and unconsciousness sets in. Death can occur if hypothermia is not treated. Remove a hypothermic person from the water and replace wet clothes with warm, dry clothing and a blanket. Do not massage the extremities or give the victim alcohol or caffeine.

**Heat exhaustion and sunburn:** When it is hot, wear sunglasses, a hat and lightweight, light-colored clothing. Apply sunblock with a high SPF rating and drink lots of fluids.

RESCUE AND SURVIVAL

No one should ever count on being rescued. Boaters must be prepared for mishaps on the water. Drowning can occur within a few feet of safety. Even those who cannot swim can save a life if they know basic rescue techniques.

RESCUE SEQUENCE

- 1. Self rescue:** The rescuer should try to talk the person in trouble into self-rescue and avoid endangering themselves unnecessarily.
- 2. Reach:** A fishing rod, shirt, towel, branch, car, pole, boat hook or other object can be used to reach out to the victim. If nothing is available and the victim is within arm's reach, the rescuer should tie flat and extend a leg to the victim, pulling them to safety.
- 3. Throw:** If the victim is too far for the reach rescue, the rescuer should throw a rope, life jacket, empty jug, ice chest or gas can, anything else that will float to the victim. Rescue line bags are excellent items to keep on a boat.
- 4. Row:** The rescuer may boat out to the victim and extend an oar or paddle. The victim should be brought back onboard over the stern (back) of the boat. They should be pulled onboard as carefully as possible. If it isn't possible to bring them onboard, the rescuer should have them hold on to the boat, or hold them until help arrives.
- 5. Go:** Swimming rescues are for trained lifeguards only. A swimming rescue should never be tried until all other basic rescue methods have been ruled out. Rescuers who must swim to a victim should wear a life jacket and take a floating object with them to extend to the victim. Rescuers should avoid personal contact with the victim unless they have lifeguard training. Even then, it is used only as a last resort.

CAPSIZING

If a small, open boat capsizes, everyone should take a head count, check for injury and stay with the boat. Most small boats have enough flotation to keep them from sinking. If possible, the boat should be turned upright and the water bailed out. It can then be paddled to shore. It is also possible to paddle a swamped boat to shore.

AND FALLS OVERBOARD

The golden rule if a boat capsizes is for everyone to stay with the boat. **Swamping and capsizing:** If you do capsize or swamp the boat, stay with the boat and make sure everyone has a life jacket. Stay calm. If the boat can be righted, bail out as much water as possible, get in and paddle towards shore. If your boat capsizes or you fall overboard in moving water such as a river, get in the self-rescue position with your feet pointed downstream and near the surface to avoid potential head injury and foot entrapment.

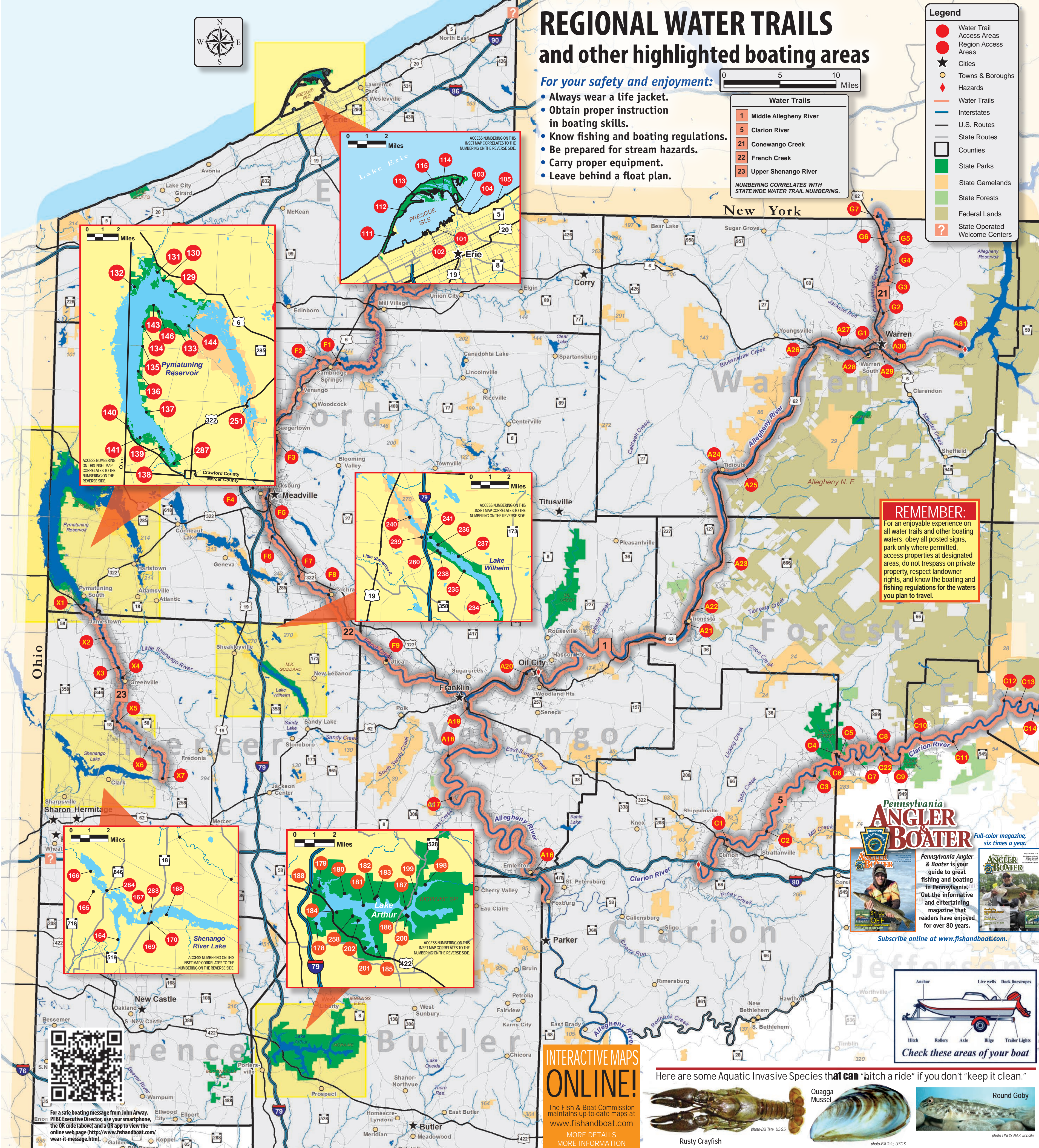
**Falls overboard:** Falls overboard are dangerous situations. People fall overboard even when wind and seas are calm. The shock of falling into the water—especially cold water, can be life-threatening. Wearing a life jacket can be your only source of survival. The best means of survival is to already have a life jacket on and stay with the boat.

Prevention

- When getting into or moving around in a small boat, always maintain three points of contact, keeping your weight low and close to the centerline. Don't overload your boat.
- Do not allow passengers to stand in small boats or sit on foredecks, gunwales, engine boxes, seat backs or transoms.
- Watch crew members and frequently check that everyone is aboard.
- Wear deck-gripping shoes (bare feet have poor traction).
- Avoid rough water and weather conditions whenever possible.
- Practice a procedure for recovering someone lost overboard. Toss a life jacket over the side while moving. Test to see how long it takes to stop the boat, turn and retrieve the life jacket.

ALCOHOL AND BOATING

When on a boat, the effects of alcohol are magnified. Combined with stresses from wind, motion and heat, your ability to think and perform basic tasks needed to safely operate your boat may become impaired. It is illegal to operate a boat while under the influence of alcohol or a controlled substance. Alcohol is prohibited on land and water at all state parks and at most U.S. Army Corps of Engineer projects. Pre-arrest breath tests can be used by officers to determine the probability that a boat operator is under the influence. A blood alcohol content of 0.08% or more is considered to be over the legal limit (0.02% blood alcohol content for minors). Penalties include loss of boating privileges, significant fines and imprisonment.



REGIONAL WATER TRAILS and other highlighted boating areas

For your safety and enjoyment:

- Always wear a life jacket.
- Obtain proper instruction in boating skills.
- Know fishing and boating regulations.
- Be prepared for stream hazards.
- Carry proper equipment.
- Leave behind a float plan.

Water Trails

1	Middle Allegheny River
5	Clarion River
21	Conewango Creek
22	French Creek
23	Upper Shenango River

NUMBERING CORRELATES WITH STATEWIDE WATER TRAIL NUMBERING.

- Legend
- Water Trail
  - Access Areas
  - Region Access Areas
  - Towns & Boroughs
  - Hazards
  - Water Trails
  - Interstates
  - U.S. Routes
  - State Routes
  - Counties
  - State Parks
  - State Game Lands
  - State Forests
  - Federal Lands
  - State Operated
  - Welcome Centers

NORTHWEST REGION WATER TRAIL ACCESS AREAS

Within each Pennsylvania water trail is a network of access areas that are varied in their amenities and restrictions. This access information is provided in conjunction with the organizations who have developed these water trails in partnership with the Pennsylvania Fish & Boat Commission. For more detailed mapping and information, visit [www.fishandboat.com](http://www.fishandboat.com) to view our online interactive maps. See reverse side under "Parking for L and R designations."

MIDDLE ALLEGHENY RIVER WATER TRAIL

FF#	FF#Fishing Per	FF#Show Fishing	FF#Parking	FF#Launch Ramp	FF#Dock	FF#SP	FF#P	FF#R	FF#L	FF#W
FF#	FF#Fishing Per	FF#Show Fishing	FF#Parking	FF#Launch Ramp	FF#Dock	FF#SP	FF#P	FF#R	FF#L	FF#W
A10	Warren	Allegheny River	Allegheny River	Allegheny River	Allegheny River	Allegheny River	Allegheny River	Allegheny River	Allegheny River	Allegheny River
A11	Warren	Allegheny River	Allegheny River	Allegheny River	Allegheny River	Allegheny River	Allegheny River	Allegheny River	Allegheny River	Allegheny River
A12	Warren	Allegheny River	Allegheny River	Allegheny River	Allegheny River	Allegheny River	Allegheny River	Allegheny River	Allegheny River	Allegheny River
A13	Warren	Allegheny River	Allegheny River	Allegheny River	Allegheny River	Allegheny River	Allegheny River	Allegheny River	Allegheny River	Allegheny River
A14	Warren	Allegheny River	Allegheny River	Allegheny River	Allegheny River	Allegheny River	Allegheny River	Allegheny River	Allegheny River	Allegheny River
A15	Warren	Allegheny River	Allegheny River	Allegheny River	Allegheny River	Allegheny River	Allegheny River	Allegheny River	Allegheny River	Allegheny River
A16	Warren	Allegheny River	Allegheny River	Allegheny River	Allegheny River	Allegheny River	Allegheny River	Allegheny River	Allegheny River	Allegheny River
A17	Warren	Allegheny River	Allegheny River	Allegheny River	Allegheny River	Allegheny River	Allegheny River	Allegheny River	Allegheny River	Allegheny River
A18	Warren	Allegheny River	Allegheny River	Allegheny River	Allegheny River	Allegheny River	Allegheny River	Allegheny River	Allegheny River	Allegheny River
A19	Warren	Allegheny River	Allegheny River	Allegheny River	Allegheny River	Allegheny River	Allegheny River	Allegheny River	Allegheny River	Allegheny River
A20	Warren	Allegheny River	Allegheny River	Allegheny River	Allegheny River	Allegheny River	Allegheny River	Allegheny River	Allegheny River	Allegheny River
A21	Warren	Allegheny River	Allegheny River	Allegheny River	Allegheny River	Allegheny River	Allegheny River	Allegheny River	Allegheny River	Allegheny River
A22	Warren	Allegheny River	Allegheny River	Allegheny River	Allegheny River	Allegheny River	Allegheny River	Allegheny River	Allegheny River	Allegheny River
A23	Warren	Allegheny River	Allegheny River	Allegheny River	Allegheny River	Allegheny River	Allegheny River	Allegheny River	Allegheny River	Allegheny River
A24	Warren	Allegheny River	Allegheny River	Allegheny River	Allegheny River	Allegheny River	Allegheny River	Allegheny River	Allegheny River	Allegheny River
A25	Warren	Allegheny River	Allegheny River	Allegheny River	Allegheny River	Allegheny River	Allegheny River	Allegheny River	Allegheny River	Allegheny River
A26	Warren	Allegheny River	Allegheny River	Allegheny River	Allegheny River	Allegheny River	Allegheny River	Allegheny River	Allegheny River	Allegheny River
A27	Warren	Allegheny River	Allegheny River	Allegheny River	Allegheny River	Allegheny River	Allegheny River	Allegheny River	Allegheny River	Allegheny River
A28	Warren	Allegheny River	Allegheny River	Allegheny River	Allegheny River	Allegheny River	Allegheny River	Allegheny River	Allegheny River	Allegheny River
A29	Warren	Allegheny River	Allegheny River	Allegheny River	Allegheny River	Allegheny River	Allegheny River	Allegheny River	Allegheny River	Allegheny River
A30	Warren	Allegheny River	Allegheny River	Allegheny River	Allegheny River	Allegheny River	Allegheny River	Allegheny River	Allegheny River	Allegheny River
A31	Warren	Allegheny River	Allegheny River	Allegheny River	Allegheny River	Allegheny River	Allegheny River	Allegheny River	Allegheny River	Allegheny River
A32	Warren	Allegheny River	Allegheny River	Allegheny River	Allegheny River	Allegheny River	Allegheny River	Allegheny River	Allegheny River	Allegheny River
A33	Warren	Allegheny River	Allegheny River	Allegheny River	Allegheny River	Allegheny River	Allegheny River	Allegheny River	Allegheny River	Allegheny River
A34	Warren	Allegheny River	Allegheny River	Allegheny River	Allegheny River	Allegheny River	Allegheny River	Allegheny River	Allegheny River	Allegheny River
A35	Warren	Allegheny River	Allegheny River	Allegheny River	Allegheny River	Allegheny River	Allegheny River	Allegheny River	Allegheny River	Allegheny River
A36	Warren	Allegheny River	Allegheny River	Allegheny River	Allegheny River	Allegheny River	Allegheny River	Allegheny River	Allegheny River	Allegheny River
A37	Warren	Allegheny River	Allegheny River	Allegheny River	Allegheny River	Allegheny River	Allegheny River	Allegheny River	Allegheny River	Allegheny River
A38	Warren	Allegheny River	Allegheny River	Allegheny River	Allegheny River	Allegheny River	Allegheny River	Allegheny River	Allegheny River	Allegheny River
A39	Warren	Allegheny River	Allegheny River	Allegheny River	Allegheny River	Allegheny River	Allegheny River	Allegheny River	Allegheny River	Allegheny River
A40	Warren	Allegheny River	Allegheny River	Allegheny River	Allegheny River	Allegheny River	Allegheny River	Allegheny River	Allegheny River	Allegheny River
A41	Warren	Allegheny River	Allegheny River	Allegheny River	Allegheny River	Allegheny River	Allegheny River	Allegheny River	Allegheny River	Allegheny River
A42	Warren	Allegheny River	Allegheny River	Allegheny River	Allegheny River	Allegheny River	Allegheny River	Allegheny River	Allegheny River	Allegheny River
A43	Warren	Allegheny River	Allegheny River	Allegheny River	Allegheny River	Allegheny River	Allegheny River	Allegheny River	Allegheny River	Allegheny River
A44	Warren	Allegheny River	Allegheny River	Allegheny River	Allegheny River	Allegheny River	Allegheny River	Allegheny River	Allegheny River	Allegheny River
A45	Warren	Allegheny River	Allegheny River	Allegheny River	Allegheny River	Allegheny River	Allegheny River	Allegheny River	Allegheny River	Allegheny River
A46	Warren	Allegheny River	Allegheny River	Allegheny River	Allegheny River	Allegheny River	Allegheny River	Allegheny River	Allegheny River	Allegheny River
A47	Warren	Allegheny River	Allegheny River	Allegheny River	Allegheny River	Allegheny River	Allegheny River	Allegheny River	Allegheny River	Allegheny River
A48	Warren	Allegheny River	Allegheny River	Allegheny River	Allegheny River	Allegheny River	Allegheny River	Allegheny River	Allegheny River	Allegheny River
A49	Warren	Allegheny River	Allegheny River	Allegheny River	Allegheny River	Allegheny River	Allegheny River	Allegheny River	Allegheny River	Allegheny River
A50	Warren	Allegheny River	Allegheny River	Allegheny River	Allegheny River	Allegheny River	Allegheny River	Allegheny River	Allegheny River	Allegheny River
A51	Warren	Allegheny River	Allegheny River	Allegheny River	Allegheny River	Allegheny River	Allegheny River	Allegheny River	Allegheny River	Allegheny River
A52	Warren	Allegheny River	Allegheny River	Allegheny River	Allegheny River	Allegheny River	Allegheny River	Allegheny River	Allegheny River	Allegheny River
A53	Warren	Allegheny River	Allegheny River	Allegheny River	Allegheny River	Allegheny River	Allegheny River	Allegheny River	Allegheny River	Allegheny River
A54	Warren	Allegheny River	Allegheny River	Allegheny River	Allegheny River	Allegheny River	Allegheny River	Allegheny River	Allegheny River	Allegheny River
A55	Warren	Allegheny River	Allegheny River	Allegheny River	Allegheny River	Allegheny River	Allegheny River	Allegheny River	Allegheny River	Allegheny River
A56	Warren	Allegheny River	Allegheny River	Allegheny River	Allegheny River	Allegheny River	Allegheny River	Allegheny River	Allegheny River	Allegheny River
A57	Warren	Allegheny River	Allegheny River	Allegheny River	Allegheny River	Allegheny River	Allegheny River	Allegheny River	Allegheny River	Allegheny River
A58	Warren	Allegheny River	Allegheny River	Allegheny River	Allegheny River	Allegheny River	Allegheny River	Allegheny River	Allegheny River	Allegheny River
A59	Warren	Allegheny River	Allegheny River	Allegheny River	Allegheny River	Allegheny River	Allegheny River	Allegheny River	Allegheny River	Allegheny River
A60	Warren	Allegheny River	Allegheny River	Allegheny River	Allegheny River	Allegheny River	Allegheny River	Allegheny River	Allegheny River	Allegheny River
A61	Warren	Allegheny River	Allegheny River	Allegheny River	Allegheny River	Allegheny River	Allegheny River	Allegheny River	Allegheny River	Allegheny River
A62	Warren	Allegheny River	Allegheny River	Allegheny River	Allegheny River	Allegheny River	Allegheny River	Allegheny River	Allegheny River	Allegheny River
A63	Warren	Allegheny River	Allegheny River	Allegheny River	Allegheny River	Allegheny River	Allegheny River	Allegheny River	Allegheny River	Allegheny River
A64	Warren	Allegheny River	Allegheny River	Allegheny River	Allegheny River	Allegheny River	Allegheny River	Allegheny River	Allegheny River	Allegheny River
A65	Warren	Allegheny River	Allegheny River	Allegheny River	Allegheny River	Allegheny River	Allegheny River	Allegheny River	Allegheny River	Allegheny River
A66	Warren	Allegheny River	Allegheny River	Allegheny River	Allegheny River	Allegheny River	Allegheny River	Allegheny River	Allegheny River	Allegheny River
A67	Warren	Allegheny River	Allegheny River	Allegheny River	Allegheny River	Allegheny River	Allegheny River	Allegheny River	Allegheny River	Allegheny River
A68	Warren	Allegheny River	Allegheny River	Allegheny River	Allegheny River	Allegheny River	Allegheny River	Allegheny River	Allegheny River	Allegheny River
A69	Warren	Allegheny River	Allegheny River	Allegheny River	Allegheny River	Allegheny River	Allegheny River	Allegheny River	Allegheny River	Allegheny River
A70	Warren	Allegheny River	Allegheny River	Allegheny River	Allegheny River	Allegheny River	Allegheny River	Allegheny River	Allegheny River	Allegheny River



ACCESS AREAS

**PARKING**  
Available parking is indicated as L, S or R.  
L Indicates larger parking lots (10 spaces or more).  
S Indicates small parking lots with fewer than 10 spaces.  
R Indicates the absence of any formal parking lot and the need to find parking along the roadway.

**HP-HORSEPOWER/LIMITS**  
The horsepower at some waterways is classified as unlimited, because there are no horsepower-restricting regulations on the waterways. Many small and medium-sized waterways are listed as having unlimited horsepower for this reason. However, these waterways are best suited for small, unpowered craft.  
Horsepower limits are shown by a number. Otherwise, the following abbreviations have the associated meanings.  
et: electric motors only  
ut: unlimited horsepower  
up: unpowered boats only  
nb: no boating permitted  
wh: whitewater  
pwc: personal watercraft only

**FEES**  
A dot (•) under "FE" designates that use of the facility is permitted by payment of a user fee. Powerboats properly registered with the Pennsylvania Fish & Boat Commission may be launched at Commission facilities. Registered boats may also be launched at state park facilities without additional fees. The purchase of a State Parks or Commission launch permit is required for all other unpowered watercraft launched at a state park or Commission access.

**DOCKS**  
"Dock" refers to the availability of a loading dock. This does not indicate availability of mooring docks or slips.

**LAUNCH RAMP**  
Where a launch ramp is indicated, a boat may be launched directly from a trailer by backing down a ramp. Quality, construction, percent of slope and water depth at various points may not be suitable for or intended for the launch of every craft. Consult the access owner if your craft is large or unusual.

Some areas on smaller waters have special facilities to ease the hand-launching of canoes, kayaks and other car-topped boats. These areas are not specifically shown.

**ACCESSIBILITY FOR THE DISABLED**  
Many areas listed here furnish, to varying degrees, recreational facilities and accommodations for those with disabilities. Persons with special needs are encouraged to call the access owner for specific information before visiting any listed area.

**FISHING FROM A BOAT**  
All motorboats must be registered, regardless of where they launch. Unpowered boats using Pennsylvania Fish & Boat Commission access areas or Pennsylvania state parks or forests must either be registered or display a valid launch permit. Wearable U.S. Coast Guard-approved personal flotation devices (PFDs or life jackets) must be on board and available for each person. Children 12 years of age and younger must wear an approved wearable life jacket when underway on board any boat 20 feet or less in length and in all canoes and kayaks.

For rules and regulations concerning boating on Pennsylvania's waters and to learn the legal requirements, consult the Commission's *Boating Handbook*, available from the Commission (717-705-7835), or view the publication online at [www.fishandboat.com](http://www.fishandboat.com).

**TROUT STOCKING**  
The Commission stocks about 4.2 million legal-sized trout each year in about 5,000 miles of coldwater streams and over 100 trout lakes. Stocking occurs during all four seasons, although most of the interest builds during spring.

**FISHING LICENSES**  
A license, which must be displayed on an outer garment while fishing, is required of all people 16 years of age and older. Licenses may be purchased from approximately 1,000 license issuing agencies across the state. A current Pennsylvania trout/salmon permit (stamp) is required to fish for trout and salmon in Pennsylvania's waters.

**FOR MORE INFORMATION**  
For more detailed information on specially regulated areas, and fishing and boating regulations and laws, see the current *Pennsylvania Fishing Summary* and the *Boating Handbook*. For a list of publications, send a self-addressed, stamped business-sized envelope with requests to: Media Productions, PA Fish & Boat Commission, P.O. Box 67000, Harrisburg, PA 17105-7000. We realize that conditions change on our waterways and that some of this information may not be accurate. Users noting errors or omissions on this map are urged to report them to the same address above. Visit the Commission's website at [www.fishandboat.com](http://www.fishandboat.com).

**SAFETY AND SECURITY**  
Report homeland security or terrorism tips to the PA State Police ([www.sp.state.pa.us](http://www.sp.state.pa.us)). Phone: 1-888-292-1919 or e-mail: [sp-intelligence@pa.gov](mailto:sp-intelligence@pa.gov).

BOATER'S CHECKLIST FOR SAFE AND SECURE WATERWAYS

- ✓ Keep your distance from all military, cruise-line and commercial shipping. Do not approach within 100 yards and slow to minimum speed within 500 yards of any U.S. Naval vessel, including any U.S. military or military supply vessel. Violators of the Naval Vessel Protection Zone face up to 5 years in prison and a \$250,000 fine, not to mention a quick and severe response. Approaching certain other commercial vessels may result in an immediate boarding.
- ✓ Observe and avoid all security zones. Avoid commercial port operations areas, especially those that involve military, cruise-line or petroleum facilities. Observe and avoid other restricted areas. Violators will be perceived as a threat, and will face a quick, determined and severe response.
- ✓ Do not stop or anchor beneath bridges or in the channel. If you do, expect to be boarded by law enforcement officials.
- ✓ Keep a sharp eye out for anything that looks peculiar or out of the ordinary. Report all activities that seem suspicious to the local authorities, the Coast Guard or the port or marina security. Do not approach or challenge those doing an official mission.
- ✓ Always secure and lock your boat when you are not on board.
- ✓ Never leave your boat accessible to others. Always take the keys to the boat with you.

This information was provided by the U.S. Coast Guard and the National Association of State Boating Law Administrators.

IMPOUNDMENT & LAKE SPECIAL REGULATION AREAS

ID#	COUNTY	WATERWAY	REGULATION TYPE	NEAREST TOWN
10	Warren	Two Mile Run Reservoir	Big Bass	Franklin
50	Butler	Lake Arthur	Big Bass	Unionville
51	Butler	Lake Arthur	Big Bass	Unionville
52	Butler	Shenango River Lake	Big Bass	Shenando
53	Butler	Shenango River Lake	Big Bass	Shenando
54	Butler	Shenango River Lake	Big Bass	Shenando
55	Butler	Shenango River Lake	Big Bass	Shenando
56	Butler	Shenango River Lake	Big Bass	Shenando
57	Butler	Shenango River Lake	Big Bass	Shenando
58	Butler	Shenango River Lake	Big Bass	Shenando
59	Butler	Shenango River Lake	Big Bass	Shenando
60	Butler	Shenango River Lake	Big Bass	Shenando
61	Butler	Shenango River Lake	Big Bass	Shenando
62	Butler	Shenango River Lake	Big Bass	Shenando
63	Butler	Shenango River Lake	Big Bass	Shenando
64	Butler	Shenango River Lake	Big Bass	Shenando
65	Butler	Shenango River Lake	Big Bass	Shenando
66	Butler	Shenango River Lake	Big Bass	Shenando
67	Butler	Shenango River Lake	Big Bass	Shenando
68	Butler	Shenango River Lake	Big Bass	Shenando
69	Butler	Shenango River Lake	Big Bass	Shenando
70	Butler	Shenango River Lake	Big Bass	Shenando
71	Butler	Shenango River Lake	Big Bass	Shenando
72	Butler	Shenango River Lake	Big Bass	Shenando
73	Butler	Shenango River Lake	Big Bass	Shenando
74	Butler	Shenango River Lake	Big Bass	Shenando
75	Butler	Shenango River Lake	Big Bass	Shenando
76	Butler	Shenango River Lake	Big Bass	Shenando
77	Butler	Shenango River Lake	Big Bass	Shenando
78	Butler	Shenango River Lake	Big Bass	Shenando
79	Butler	Shenango River Lake	Big Bass	Shenando
80	Butler	Shenango River Lake	Big Bass	Shenando
81	Butler	Shenango River Lake	Big Bass	Shenando
82	Butler	Shenango River Lake	Big Bass	Shenando
83	Butler	Shenango River Lake	Big Bass	Shenando
84	Butler	Shenango River Lake	Big Bass	Shenando
85	Butler	Shenango River Lake	Big Bass	Shenando
86	Butler	Shenango River Lake	Big Bass	Shenando
87	Butler	Shenango River Lake	Big Bass	Shenando
88	Butler	Shenango River Lake	Big Bass	Shenando
89	Butler	Shenango River Lake	Big Bass	Shenando
90	Butler	Shenango River Lake	Big Bass	Shenando
91	Butler	Shenango River Lake	Big Bass	Shenando
92	Butler	Shenango River Lake	Big Bass	Shenando
93	Butler	Shenango River Lake	Big Bass	Shenando
94	Butler	Shenango River Lake	Big Bass	Shenando
95	Butler	Shenango River Lake	Big Bass	Shenando
96	Butler	Shenango River Lake	Big Bass	Shenando
97	Butler	Shenango River Lake	Big Bass	Shenando
98	Butler	Shenango River Lake	Big Bass	Shenando
99	Butler	Shenango River Lake	Big Bass	Shenando
100	Butler	Shenango River Lake	Big Bass	Shenando

FISH & BOAT COMMISSION STATE FISH HATCHERIES

ID#	COUNTY	WATERWAY	REGULATION TYPE	NEAREST TOWN
1	Butler	Shenango River	Big Bass	Franklin
2	Butler	Shenango River	Big Bass	Franklin
3	Butler	Shenango River	Big Bass	Franklin
4	Butler	Shenango River	Big Bass	Franklin
5	Butler	Shenango River	Big Bass	Franklin
6	Butler	Shenango River	Big Bass	Franklin
7	Butler	Shenango River	Big Bass	Franklin
8	Butler	Shenango River	Big Bass	Franklin
9	Butler	Shenango River	Big Bass	Franklin
10	Butler	Shenango River	Big Bass	Franklin
11	Butler	Shenango River	Big Bass	Franklin
12	Butler	Shenango River	Big Bass	Franklin
13	Butler	Shenango River	Big Bass	Franklin
14	Butler	Shenango River	Big Bass	Franklin
15	Butler	Shenango River	Big Bass	Franklin
16	Butler	Shenango River	Big Bass	Franklin
17	Butler	Shenango River	Big Bass	Franklin
18	Butler	Shenango River	Big Bass	Franklin
19	Butler	Shenango River	Big Bass	Franklin
20	Butler	Shenango River	Big Bass	Franklin
21	Butler	Shenango River	Big Bass	Franklin
22	Butler	Shenango River	Big Bass	Franklin
23	Butler	Shenango River	Big Bass	Franklin
24	Butler	Shenango River	Big Bass	Franklin
25	Butler	Shenango River	Big Bass	Franklin
26	Butler	Shenango River	Big Bass	Franklin
27	Butler	Shenango River	Big Bass	Franklin
28	Butler	Shenango River	Big Bass	Franklin
29	Butler	Shenango River	Big Bass	Franklin
30	Butler	Shenango River	Big Bass	Franklin
31	Butler	Shenango River	Big Bass	Franklin
32	Butler	Shenango River	Big Bass	Franklin
33	Butler	Shenango River	Big Bass	Franklin
34	Butler	Shenango River	Big Bass	Franklin
35	Butler	Shenango River	Big Bass	Franklin
36	Butler	Shenango River	Big Bass	Franklin
37	Butler	Shenango River	Big Bass	Franklin
38	Butler	Shenango River	Big Bass	Franklin
39	Butler	Shenango River	Big Bass	Franklin
40	Butler	Shenango River	Big Bass	Franklin
41	Butler	Shenango River	Big Bass	Franklin
42	Butler	Shenango River	Big Bass	Franklin
43	Butler	Shenango River	Big Bass	Franklin
44	Butler	Shenango River	Big Bass	Franklin
45	Butler	Shenango River	Big Bass	Franklin
46	Butler	Shenango River	Big Bass	Franklin
47	Butler	Shenango River	Big Bass	Franklin
48	Butler	Shenango River	Big Bass	Franklin
49	Butler	Shenango River	Big Bass	Franklin
50	Butler	Shenango River	Big Bass	Franklin
51	Butler	Shenango River	Big Bass	Franklin
52	Butler	Shenango River	Big Bass	Franklin
53	Butler	Shenango River	Big Bass	Franklin
54	Butler	Shenango River	Big Bass	Franklin
55	Butler	Shenango River	Big Bass	Franklin
56	Butler	Shenango River	Big Bass	Franklin
57	Butler	Shenango River	Big Bass	Franklin
58	Butler	Shenango River	Big Bass	Franklin
59	Butler	Shenango River	Big Bass	Franklin
60	Butler	Shenango River	Big Bass	Franklin
61	Butler	Shenango River	Big Bass	Franklin
62	Butler	Shenango River	Big Bass	Franklin
63	Butler	Shenango River	Big Bass	Franklin
64	Butler	Shenango River	Big Bass	Franklin
65	Butler	Shenango River	Big Bass	Franklin
66	Butler	Shenango River	Big Bass	Franklin
67	Butler	Shenango River	Big Bass	Franklin
68	Butler	Shenango River	Big Bass	Franklin
69	Butler	Shenango River	Big Bass	Franklin
70	Butler	Shenango River	Big Bass	Franklin
71	Butler	Shenango River	Big Bass	Franklin
72	Butler	Shenango River	Big Bass	Franklin
73	Butler	Shenango River	Big Bass	Franklin
74	Butler	Shenango River	Big Bass	Franklin
75	Butler	Shenango River	Big Bass	Franklin
76	Butler	Shenango River	Big Bass	Franklin
77	Butler	Shenango River	Big Bass	Franklin
78	Butler	Shenango River	Big Bass	Franklin
79	Butler	Shenango River	Big Bass	Franklin
80	Butler	Shenango River	Big Bass	Franklin
81	Butler	Shenango River	Big Bass	Franklin
82	Butler	Shenango River	Big Bass	Franklin
83	Butler	Shenango River	Big Bass	Franklin
84	Butler	Shenango River	Big Bass	Franklin
85	Butler	Shenango River	Big Bass	Franklin
86	Butler	Shenango River	Big Bass	Franklin
87	Butler	Shenango River	Big Bass	Franklin
88	Butler	Shenango River	Big Bass	Franklin
89	Butler	Shenango River	Big Bass	Franklin
90	Butler	Shenango River	Big Bass	Franklin
91	Butler	Shenango River	Big Bass	Franklin
92	Butler	Shenango River	Big Bass	Franklin
93	Butler	Shenango River	Big Bass	Franklin
94	Butler	Shenango River	Big Bass	Franklin
95	Butler	Shenango River	Big Bass	Franklin
96	Butler	Shenango River	Big Bass	Franklin
97	Butler	Shenango River	Big Bass	Franklin
98	Butler	Shenango River	Big Bass	Franklin
99	Butler	Shenango River	Big Bass	Franklin
100	Butler	Shenango River	Big Bass	Franklin

FLOWING WATER SPECIAL REGULATION AREAS

For more information on these areas, visit the Pennsylvania Fish & Boat Commission website at [www.fishandboat.com](http://www.fishandboat.com).

ALP Artificial Lakes only. FTY Fly Fishing only.

ALP Artificial Lakes only. FTY Fly Fishing only.

ALP Artificial Lakes only. FTY Fly Fishing only.

ALP Artificial Lakes only. FTY Fly Fishing only.

ALP Artificial Lakes only. FTY Fly Fishing only.

ALP Artificial Lakes only. FTY Fly Fishing only.

ALP Artificial Lakes only. FTY Fly Fishing only.

ALP Artificial Lakes only. FTY Fly Fishing only.

ALP Artificial Lakes only. FTY Fly Fishing only.

ALP Artificial Lakes only. FTY Fly Fishing only.

ALP Artificial Lakes only. FTY Fly Fishing only.

ALP Artificial Lakes only. FTY Fly Fishing only.

ALP Artificial Lakes only. FTY Fly Fishing only.

ALP Artificial Lakes only. FTY Fly Fishing only.

ALP Artificial Lakes only. FTY Fly Fishing only.

ALP Artificial Lakes only. FTY Fly Fishing only.

ALP Artificial Lakes only. FTY Fly Fishing only.

ALP Artificial Lakes only. FTY Fly Fishing only.

ALP Artificial Lakes only. FTY Fly Fishing only.

ALP Artificial Lakes only. FTY Fly Fishing only.

ALP Artificial Lakes only. FTY Fly Fishing only.

ALP Artificial Lakes only. FTY Fly Fishing only.

ALP Artificial Lakes only. FTY Fly Fishing only.

ALP Artificial Lakes only. FTY Fly Fishing only.

ALP Artificial Lakes only. FTY Fly Fishing only.

ALP Artificial Lakes only. FTY Fly Fishing only.

ALP Artificial Lakes only. FTY Fly Fishing only.

ALP Artificial Lakes only. FTY Fly Fishing only.

ALP Artificial Lakes only. FTY Fly Fishing only.

ALP Artificial Lakes only. FTY Fly Fishing only.

ALP Artificial Lakes only. FTY Fly Fishing only.

ALP Artificial Lakes only. FTY Fly Fishing only.

ALP Artificial Lakes only. FTY Fly Fishing only.

ALP Artificial Lakes only. FTY Fly Fishing only.

ALP Artificial Lakes only. FTY Fly Fishing only.

ALP Artificial Lakes only. FTY Fly Fishing only.

ALP Artificial Lakes only. FTY Fly Fishing only.

ALP Artificial Lakes only. FTY Fly Fishing only.

ALP Artificial Lakes only. FTY Fly Fishing only.

ALP Artificial Lakes only. FTY Fly Fishing only.

ALP Artificial Lakes only. FTY Fly Fishing only.

ALP Artificial Lakes only. FTY Fly Fishing only.

ALP Artificial Lakes only. FTY Fly Fishing only.

ALP Artificial Lakes only. FTY Fly Fishing only.

ALP Artificial Lakes only. FTY Fly Fishing only.

ALP Artificial Lakes only. FTY Fly Fishing only.

ALP Artificial Lakes only. FTY Fly Fishing only.

ALP Artificial Lakes only. FTY Fly Fishing only.

ALP Artificial Lakes only. FTY Fly Fishing only.

ALP Artificial Lakes only. FTY Fly Fishing only.

ALP Artificial Lakes only. FTY Fly Fishing only.

ALP Artificial Lakes only. FTY Fly Fishing only.

ALP Artificial Lakes only. FTY Fly Fishing only.

ALP Artificial Lakes only. FTY Fly Fishing only.

ALP Artificial Lakes only. FTY Fly Fishing only.

ALP Artificial Lakes only. FTY Fly Fishing only.

ALP Artificial Lakes only. FTY Fly Fishing only.

ALP Artificial Lakes only. FTY Fly Fishing only.

ALP Artificial Lakes only. FTY Fly Fishing only.

ALP Artificial Lakes only. FTY Fly Fishing only.

ALP Artificial Lakes only. FTY Fly Fishing only.

ALP Artificial Lakes only. FTY Fly Fishing only.

ALP Artificial Lakes only. FTY Fly Fishing only.

ALP Artificial Lakes only. FTY Fly Fishing only.

ALP Artificial Lakes only. FTY Fly Fishing only.

ALP Artificial Lakes only. FTY Fly Fishing only.

ALP Artificial Lakes only. FTY Fly Fishing only.

ALP Artificial Lakes only. FTY Fly Fishing only.

ALP Artificial Lakes only. FTY Fly Fishing only.

ALP Artificial Lakes only. FTY Fly Fishing only.

ALP Artificial Lakes only. FTY Fly Fishing only.

ALP Artificial Lakes only. FTY Fly Fishing only.

ALP Artificial Lakes only. FTY Fly Fishing only.

ALP Artificial Lakes only. FTY Fly Fishing only.

ALP Artificial Lakes only. FTY Fly Fishing only.

ALP Artificial Lakes only. FTY Fly Fishing only.

ALP Artificial Lakes only. FTY Fly Fishing only.

ALP Artificial Lakes only. FTY Fly Fishing only.

ALP Artificial Lakes only. FTY Fly Fishing only.

ALP Artificial Lakes only. FTY Fly Fishing only.

ALP Artificial Lakes only. FTY Fly Fishing only.

ALP Artificial Lakes only. FTY Fly Fishing only.

ALP Artificial Lakes only. FTY Fly Fishing only.