

IMPORTANT FISHING DATES

Regulations stated below are based on regulations for Commonwealth Inland Waters... All Species of Trout and Salmon... Regional Opening Day of Trout Season is 8 a.m. on the first Saturday after March 28 to midnight Labor Day...



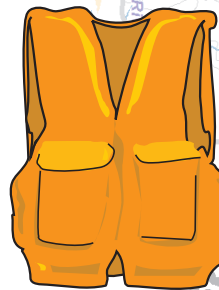
Water trails are recreational waterways on a lake, river or ocean between specific points, containing access points and day-use and/or camping sites for the boating public...

PENNSYLVANIA WATER TRAIL PROGRAM

Long before airports, highways or even trains, Pennsylvania's streams, rivers and lakes provided a means of transportation for native inhabitants... These waters became important trading routes...

PENNSYLVANIA BOATING REGULATIONS

- One wearable, Coast Guard-approved life jacket (personal flotation device or PFD) in serviceable condition and of the appropriate size is required for each person in your boat... Life jackets must be worn by all children 12 years old or younger on all boats 20 feet or less in length while under way...



For your safety and enjoyment:

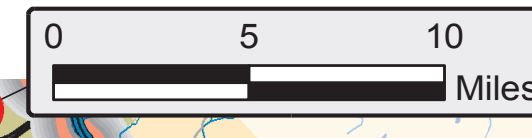
- Always wear a life jacket. Obtain proper instruction in boating skills. Know fishing and boating regulations. Be prepared for stream hazards. Carry proper equipment. Leave behind a float plan.



For a safe boating message, use your smartphone, the QR code (above) and a QR app to view the online web page...

Legend: Water Trail Access Areas, Region Access Areas, Towns & Boroughs, Hazards, Water Trails, Interstates, U.S. Routes, State Routes, Counties, State Parks, State Game Lands, State Forests, Federal Lands, State Operated Welcome Centers

REGIONAL WATER TRAILS and other highlighted boating areas



ALCOHOL AND BOATING

When on a boat, the effects of alcohol are magnified. Combined with stresses from wind, motion and heat, your ability to think and perform basic tasks needed to safely operate your boat may be impaired...

STOP AQUATIC HITCHHIKERS!

Aquatic Invasive Species (AIS) are plants and animals that have been introduced into new ecosystems and have environmental, recreational, economic or health impacts...



RESCUE AND SURVIVAL

No one should ever count on being rescued. Boaters must be prepared for mishaps on the water. Drowning can occur within a few feet of safety...

RESCUE SEQUENCE

- 1. Self rescue: The rescuer should try to talk the person in trouble into self-rescue and avoid endangering themselves unnecessarily... 2. Reach: A fishing rod, shirt, towel, branch, oar, pole, boat hook or other object...

REACH



THROW



the victim, rescue line bags are excellent items to keep on a boat. The rescuer may be pulled out to the victim and extend an oar or paddle...

been ruled out. Rescuers who swim to a victim should wear a life jacket and take a floating object with them to extend to the victim. Rescuers should avoid personal contact with the victim unless they have had lifeguard training...

PA's Fishing & Boating Opportunities



Counties: Berks, Bucks, Chester, Delaware, Lancaster, Lehigh, Montgomery, Northampton, Philadelphia, Schuylkill

www.fishandboat.com



The mission of the Pennsylvania Fish & Boat Commission is to protect, conserve and enhance the Commonwealth's aquatic resources, and provide fishing and boating opportunities.

PENNSYLVANIA FISH & BOAT COMMISSION P.O. Box 67000 Harrisburg, PA 17106-7000 Phone: (717) 705-7800

Southeast Region Law Enforcement Office P.O. Box 9 Elm, PA 17521 8 a.m.-4 p.m. weekdays Phone: (717) 626-0228 FAX: (717) 626-0486

REPORTING WATER POLLUTION If you see anything suspected to be a pollution or disturbance of any waterway, report it immediately by calling the region office or the Pennsylvania Department of Environmental Protection at 1-800-541-2050 (24 hours a day, 7 days a week).

FREE MOBILE APP! FishBoatPA Use your smartphone with a QR code app and the QR code below to access this web page.

- This app includes: Fishing and Boating Regulations, Near Me Mapping Feature, Trout Stocking Information, Fish Identification Tool, Trophy Case

www.fishandboat.com/mobile/app

PADDLING SAFETY TIPS

- Wear your life jacket. Some 80 percent of all recreational boating fatalities happen to people who are not wearing a life jacket... Expect to get wet. Even the best paddlers sometimes capsize or swamp their boats... Be prepared to swim. If the water looks too hazardous to swim in, don't go paddling.

LAUNCH PERMITS

Owners of unpowered boats (canoes, kayaks, stand-up paddleboards, rowboats, etc.) can launch their boats at PFBC lakes and access areas or at Pennsylvania state parks or forests if their boats display a PFBC launch use permit, boat registration, or Pennsylvania State Parks launch permit or mooring permit.

HAZARDS ON THE WATER

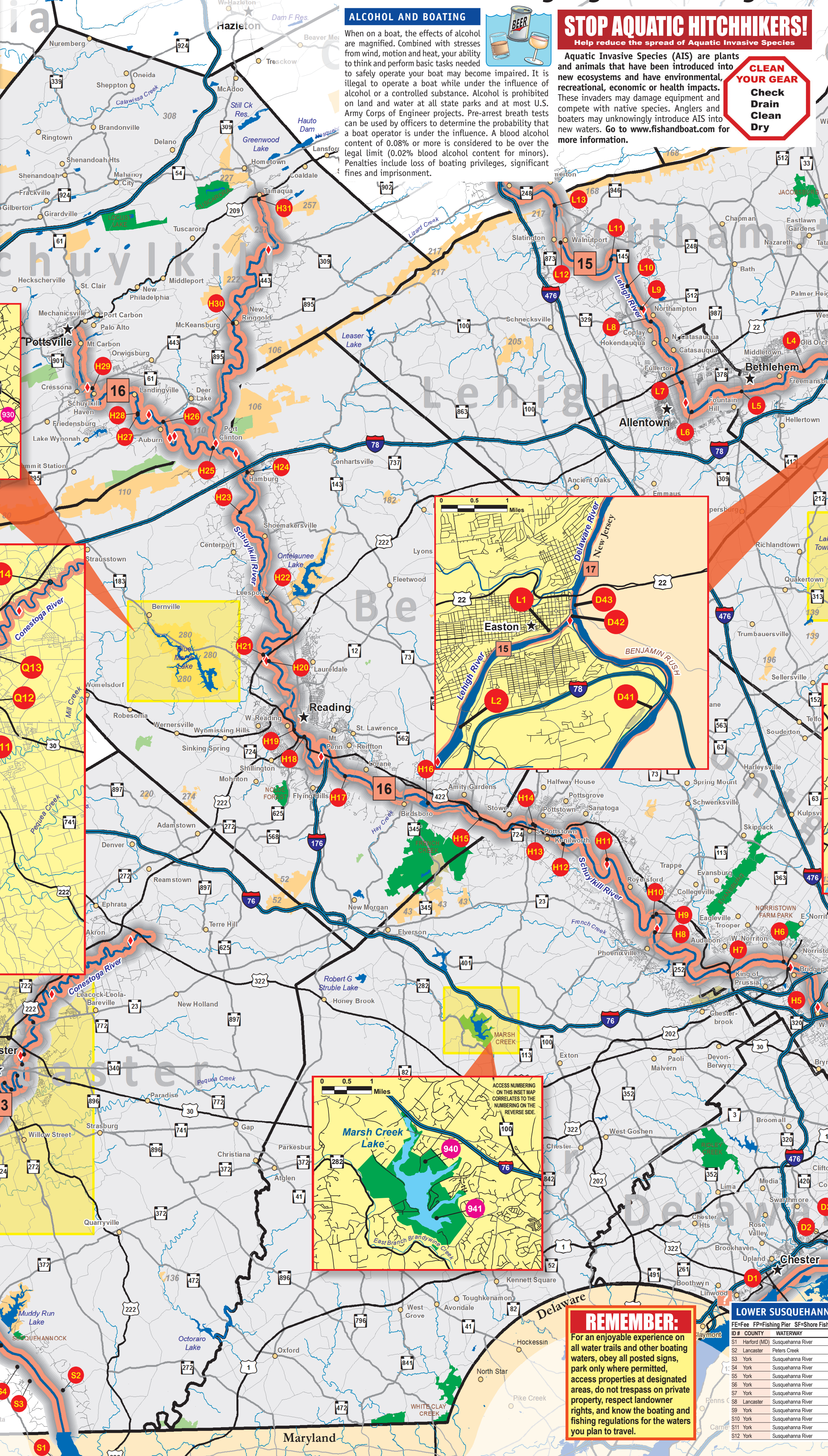
Dams: Water going over a dam creates a back current, or undertow, that can pull a boat into the turbulence and capsize it. This hydraulic can often trap and hold a person or a boat... Cold water: Sudden immersion in cold water can lead to cardiac arrest or can cause a person to inhale water.

LOW-HEAD DAM

Secondary hydraulic boil. Hypothermia: Hypothermia is the lowering of the body's core temperature. It begins with shivering. Judgment then becomes clouded and unconsciousness sets in. Death can occur if hypothermia is not treated.

MORE HAZARDS ON THE WATER

Current: Never underestimate the power of moving water. Boaters who are not sure that their boat or their ability is up to the prevailing conditions should stay off the water... Heat exhaustion and sunburn: When it is hot, wear sunglasses, a hat and lightweight, light-colored clothing.



CLEAN YOUR GEAR

Check Drain Clean Dry

REMEMBER:

For an enjoyable experience on all water trails and other boating waters, obey all posted signs, park only where permitted, access properties at designated areas, do not trespass on private property, respect landowner rights, and know the boating and fishing regulations for the waters you plan to travel.

SOUTHEAST REGION WATER TRAIL ACCESS AREAS

Within each Pennsylvania water trail is a network of access areas that are varied in their amenities and restrictions. This access information is provided in conjunction with the organizations who have developed these water trails in partnership with the Pennsylvania Fish & Boat Commission.

TIDAL DELAWARE RIVER WATER TRAIL

Table with columns: D/F COUNTY, WATERWAY, ACCESS NAME, OWNERSHIP, FE, FP, SF, P, LR, D, DM

DELAWARE RIVER WATER TRAIL

Table with columns: D/F COUNTY, WATERWAY, ACCESS NAME, OWNERSHIP, FE, FP, SF, P, LR, D, DM

CONESTOGA RIVER WATER TRAIL

Table with columns: D/F COUNTY, WATERWAY, ACCESS NAME, OWNERSHIP, FE, FP, SF, P, LR, D, DM

LEHIGH RIVER WATER TRAIL

Table with columns: D/F COUNTY, WATERWAY, ACCESS NAME, OWNERSHIP, FE, FP, SF, P, LR, D, DM

SCHUYLKILL RIVER WATER TRAIL

Table with columns: D/F COUNTY, WATERWAY, ACCESS NAME, OWNERSHIP, FE, FP, SF, P, LR, D, DM

LOWER SUSQUEHANNA RIVER WATER TRAIL

Table with columns: D/F COUNTY, WATERWAY, ACCESS NAME, OWNERSHIP, FE, FP, SF, P, LR, D, DM

Water Trails

- 9 Lower Susquehanna River, 13 Conestoga River, 15 Lehigh River, 16 Schuylkill River, 17 Delaware River, 17a Tidal Delaware River

Water Trail Access Amenities

Water trail access amenities are subject to change and are current at the time of publication, based on the information provided by partnering water trail organizations.

INTERACTIVE MAPS ONLINE!

The Fish & Boat Commission has interactive maps online! www.fishandboat.com

MORE DETAILS

www.fishandboat.com



ACCESS AREAS

PARKING Available parking is indicated as L, S or R. L indicates small parking lots (10 spaces or more). S indicates larger parking lots with fewer than 10 spaces. R indicates the absence of any formal parking lot and the need to find parking along the roadway.

HP-HORSEPOWER/LIMITS The horsepower at some waterways is classified as unlimited, because there are no horsepower-restricting regulations on the waterways. Many small and medium-sized waterways are listed as having unlimited horsepower for this reason. However, these waterways are best suited for small, unpowered craft.

Horsepower limits are shown by a number. Otherwise, the following abbreviations have the associated meanings: uc: electric motors only uc unlimited horsepower up: unpowered boats only nb: no boating permitted wh: whitewater

FEES A dot (•) under "FE" designates that use of the facility is permitted by payment of a user fee. Powerboats properly registered with the Pennsylvania Fish & Boat Commission may be launched at Commission facilities. Registered boats may also be launched at state park facilities without additional fees.

DOCKS "Dock" refers to the availability of a loading dock. This does not indicate availability of mooring docks or slips.

LAUNCH RAMPs Where a launch ramp is indicated, a boat may be launched directly from a trailer backing down a ramp. Quality, construction, percent of slope and water depth at camps vary, and every ramp is not suitable or intended for the launch of every craft. Consult the access owner if your craft is large or unusual.

Some areas of smaller waters have special facilities to ease the hand-launching of canoes, kayakers and other car-topped boats. These areas are not specifically shown.

ACCESSIBILITY FOR THE DISABLED Many areas listed herein, to varying degrees, recreational facilities and accommodations for those with disabilities. Persons with special needs are encouraged to call the access owner for specific information before visiting any listed area.

FISHING FROM A BOAT

All motorboats must be registered, regardless of where they launch. Unpowered boats using Pennsylvania Fish & Boat Commission access areas or Pennsylvania state parks or forests must be registered or display a valid launch permit. Wearable U.S. Coast Guard-approved personal flotation devices (PFD or life jackets) must be on board and available for each person. Children 12 years of age and younger must wear an approved wearable life jacket when underway on board any boat 20 feet or less in length and in all canoes and kayaks.

For rules and regulations concerning boating on Pennsylvania's waters and to learn the legal requirements that the Commission's Boat Handbook, available from the Commission (717-705-7835), or view the publication online at www.fishandboat.com.

TROUT STOCKING

The Commission stocks about 4.2 million legal-sized trout each year in about 5,000 miles of coldwater streams and over 100 trout lakes. Stocking occurs during all four seasons, although most of the interest builds during spring.

FISHING LICENSES

A license, which must be displayed on an outer garment while fishing, is required of all people 16 years of age and older. Licenses may be purchased from approximately 1,000 license issuing agents across the state. A current Pennsylvania trout or salmon permit (stamp) is required to fish for trout and salmon in Pennsylvania waters.

FOR MORE INFORMATION

For more information on specially regulated areas, and fishing and boating regulations and laws, see the current Pennsylvania Fishing Summary and the Boating Handbook. For a list of publications, send a self-addressed, stamped business-sized envelope with return to: Media Productions, PA Fish & Boat Commission, P.O. Box 67000, Harrisburg, PA 17106-7000. We realize that conditions change on our waterways and that some of this information may not be accurate. Users noting errors or omissions on this map are urged to report them to the same address above. Visit the Commission's website at www.fishandboat.com.

SAFETY AND SECURITY

Report homeland security or terrorism tips to the PA State Police (www.psp.pa.gov). Phone: 1-888-292-1919 or e-mail: sp-intelligence@pa.gov.

BOATER'S CHECKLIST FOR SAFE AND SECURE WATERWAYS

- Keep your distance from all military, cruise-line and commercial shipping. Do not approach within 100 yards and slow to minimum speed within 500 yards of any U.S. Naval vessel, including any U.S. military or military supply vessel. Violators of the Naval Vessel Protection Zone face up to 6 years in prison and a \$250,000 fine, not to mention a quick and certain prosecution. Approaching other commercial vessels may result in an immediate boarding. Observe and avoid all security zones. Avoid commercial port operations areas, especially those that involve military, cruise-line or petroleum facilities. Observe and avoid other restricted areas. Violators will be perceived as a threat and will face a quick, determined and severe response. Do not stop or anchor beneath bridges or in the channel. If you do, expect to be boarded by law enforcement. Keep a sharp eye out for anything that looks peculiar or out of the ordinary. Report all activities that seem suspicious to the local authorities, the Coast Guard or the port or marina security. Do not approach or challenge those acting in a suspicious manner. Always secure and lock your boat when you are not on board. Never leave your boat accessible to others. Always take the keys to the boat with you.

WHO MUST WEAR A LIFE JACKET?

- All water skiers and anyone towed behind a vessel, passenger watercraft operators and passengers and sailboarders (windsurfers). Inflatable life jackets are not acceptable for these activities. Children 2 years of age and younger on Commonwealth waters when underway in any boat 20 feet or less in length and in all canoes and kayaks. On Pittsburgh District U.S. Army Corps of Engineers lakes only, everyone in boats under 16 feet and in all canoes and kayaks. Everyone on boats less than 16 feet in length or any canoe or kayak during the cold weather months from November 1 through April 30. Life jackets should be personalized, properly fitted and tested. Everyone should know how to use them. Always wear your life jacket.

Full-color magazine, six times a year. Pennsylvania Angler & Boater is your guide to great fishing and boating in Pennsylvania. Get the informative and entertaining magazine that readers have enjoyed for over 80 years. Subscribe online at www.fishandboat.com

Table with 4 columns: FACILITY, CITY, COUNTY, WATERWAY. Lists various launch facilities across Pennsylvania.

SOUTHEAST REGION ACCESS AREAS

Table with 10 columns: COUNTY, WATERWAY, ACCESS AREA, OVERSIGHT, HP, FE, UP, L, S, R, D. Lists access areas in the Southeast region.

Table with 10 columns: COUNTY, WATERWAY, ACCESS AREA, OVERSIGHT, HP, FE, UP, L, S, R, D. Lists access areas in the Southeast region.

Table with 10 columns: COUNTY, WATERWAY, ACCESS AREA, OVERSIGHT, HP, FE, UP, L, S, R, D. Lists access areas in the Southeast region.

Table with 10 columns: COUNTY, WATERWAY, ACCESS AREA, OVERSIGHT, HP, FE, UP, L, S, R, D. Lists access areas in the Southeast region.

Table with 10 columns: COUNTY, WATERWAY, ACCESS AREA, OVERSIGHT, HP, FE, UP, L, S, R, D. Lists access areas in the Southeast region.

Table with 10 columns: COUNTY, WATERWAY, ACCESS AREA, OVERSIGHT, HP, FE, UP, L, S, R, D. Lists access areas in the Southeast region.

Table with 10 columns: COUNTY, WATERWAY, ACCESS AREA, OVERSIGHT, HP, FE, UP, L, S, R, D. Lists access areas in the Southeast region.

Table with 10 columns: COUNTY, WATERWAY, ACCESS AREA, OVERSIGHT, HP, FE, UP, L, S, R, D. Lists access areas in the Southeast region.

Table with 10 columns: COUNTY, WATERWAY, ACCESS AREA, OVERSIGHT, HP, FE, UP, L, S, R, D. Lists access areas in the Southeast region.

Table with 10 columns: COUNTY, WATERWAY, ACCESS AREA, OVERSIGHT, HP, FE, UP, L, S, R, D. Lists access areas in the Southeast region.

REGIONAL FISHING & BOATING OPPORTUNITIES

Numbers for Special Regulation Areas and Access Areas are consistent with numbering on the Commission's statewide Fishing & Boating Map. "Stocked Trout Waters" are highlighted in orange. For specific trout stocking lists, frequency and other up-to-date information, contact the regional office or go to: www.fishandboat.com.

STOCKED TROUT WATERS OPEN TO YEAR-ROUND FISHING. A-C: Open to year-round fishing. D-G: Open to year-round fishing.

IMPONDMENT & LAKE SPECIAL REGULATION AREAS. Table with 10 columns: COUNTY, WATERWAY, ACCESS AREA, OVERSIGHT, HP, FE, UP, L, S, R, D.

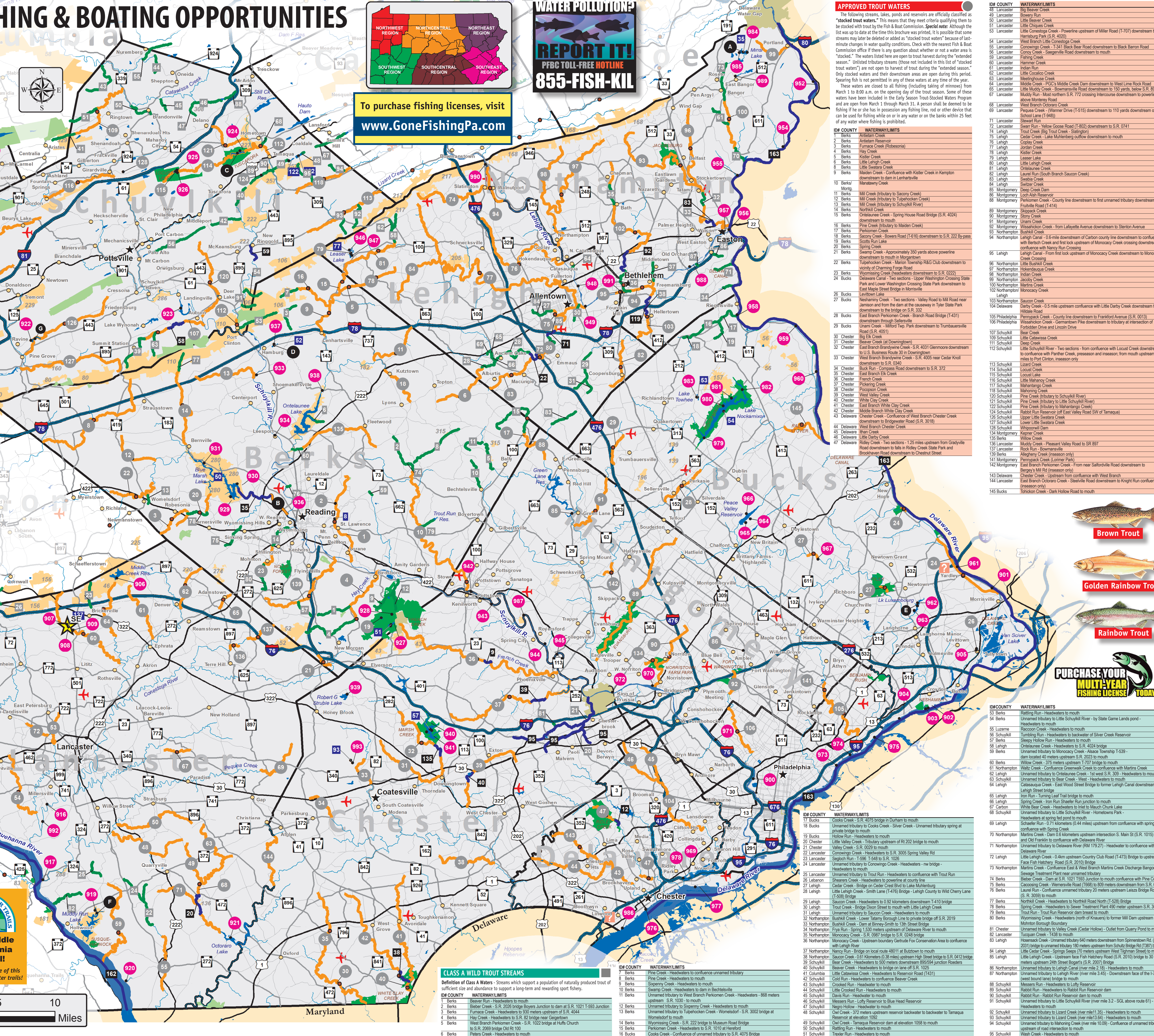
NOTICE SPECIAL REGULATIONS SMALLMOUTH BASS LARGEMOUTH BASS. From 12:01 a.m. on May 1 through 12:01 a.m. the first Saturday after June 11. CLOSED SEASON, NO TOURNAMENTS.

Legend. Symbols for Regional Headquarters, State Fish Hatcheries, Access Areas, Impoundments and Lakes Special Regulation Areas, etc.

CLASS A WILD TROUT STREAMS. Definition of Class A Waters - Streams which support a population of naturally produced trout of sufficient size and abundance to support a long-term and rewarding sport fishery.

Fish and Paddle a Pennsylvania Water Trail. Check out the other side of this map for this region's water trails!

0 5 10 Miles. Scale bar for the map.



To purchase fishing licenses, visit www.GoneFishingPA.com

WATER POLLUTION? REPORT IT! PFBC TOLL-FREE HOTLINE 855-FISH-KIL

APPROVED TROUT WATERS. The following streams, lakes, ponds and reservoirs are officially classified as "stocked trout waters"...

DM COUNTY WATERWAY/LIMITS. Table listing waterway limits for various counties.

DM COUNTY WATERWAY/LIMITS. Table listing waterway limits for various counties.

DM COUNTY WATERWAY/LIMITS. Table listing waterway limits for various counties.

DM COUNTY WATERWAY/LIMITS. Table listing waterway limits for various counties.

DM COUNTY WATERWAY/LIMITS. Table listing waterway limits for various counties.

DM COUNTY WATERWAY/LIMITS. Table listing waterway limits for various counties.

DM COUNTY WATERWAY/LIMITS. Table listing waterway limits for various counties.

DM COUNTY WATERWAY/LIMITS. Table listing waterway limits for various counties.

DM COUNTY WATERWAY/LIMITS. Table listing waterway limits for various counties.

DM COUNTY WATERWAY/LIMITS. Table listing waterway limits for various counties.

DM COUNTY WATERWAY/LIMITS. Table listing waterway limits for various counties.

DM COUNTY WATERWAY/LIMITS. Table listing waterway limits for various counties.



PURCHASE YOUR MULTY-USE FISHING LICENSE TODAY!