

IMPORTANT FISHING DATES

Regulations stated below are based on regulations for Commonwealth Inland Waters.*

All Species of Trout and Salmon

Regional Opening Day of Trout Season is 8 a.m. on the first Saturday after March 28 to midnight Labor Day and includes only those waters in 18 southeastern counties and two waters crossing from those counties listed in the Regional Opening Day of Trout Season Program...

Regional Season for the balance of all other Commonwealth Inland Waters is 8 a.m. on the first Saturday after April 11 to midnight Labor Day...

Extended Season

Extended Season Class A Wild Trout stream sections are no harvest - catch and release only. Streams are listed at www.fishandboat.com/classa.pdf

Bass - Largemouth, Smallmouth and Spotted (Lakes)

January 1 to midnight the day before the first Saturday after April 11 and November 1 to midnight December 31; minimum size is 15 inches; daily limit is 4 (combined species).

Bass - Largemouth, Smallmouth and Spotted (Rivers and Streams)

January 1 to midnight the day before the first Saturday after April 11 and October 1 to midnight December 31; minimum size is 15 inches; daily limit is 4 (combined species).

Walleyes, Saugauey (hybrids) and Sauger

January 1 through March 14 and 12:01 a.m. the first Saturday in May to midnight, December 31; minimum size for Walleyes and Saugauey (hybrids) is 15 inches; daily limit is 6. Minimum size for Sauger is 12 inches; daily limit is 6.

NOTE: Stocked trout waters are closed to fishing from March 1 to the opening day of the regular trout season in April, unless included in the Regional Opening Day of Trout Season Program or Stocked Trout Waters open to Year-Round Fishing Program.

PA's Fishing & Boating Opportunities

Counties: Allegheny, Armstrong, Beaver, Cambria, Fayette, Greene, Indiana, Somerset, Washington, Westmoreland

www.fishandboat.com

Southwest Region Law Enforcement Office

236 Lake Road, Somerset, PA 15501

8 a.m.-4 p.m., weekdays. Phone: (814) 445-8974

FAX: (814) 445-3497

REPORTING WATER POLLUTION

If you see anything suspected to be a pollution or disturbance of any waterway, report it immediately by calling the region office or the Pennsylvania Department of Environmental Protection at 1-800-541-2050 (24 hours a day, 7 days a week).

FREE MOBILE APP: FishBoatPA

Use your smartphone (with a QR code app) and the QR code below to access this web page.

This app includes: Fishing and Boating Regulations, Near Me Map, Mapping Feature, Trout Stocking Information, Fish Identification Tool, Trophy Case

Requires data access for some features. www.fishandboat.com/mobile.htm



Water trails are recreational waterways on a lake, river or ocean between specific points, containing access points and day-use and/or camping sites for the boating public. Water trails emphasize low-impact use and promote resource stewardship. The Pennsylvania Fish & Boat Commission (PFBC) and its water trail partners invite you to explore these unique Pennsylvania water trails. As you paddle or row, always remember to "Wear It!"

PENNSYLVANIA WATER TRAIL PROGRAM

Long before airports, highways or even trains, Pennsylvania's streams, rivers and lakes provided a means of transportation for native inhabitants. As European explorers ventured into "Penn's Woods," these waters became important trading routes. Later, as demand for logs, coal and other goods soared, the Commonwealth's waterways became commercial highways. Today, you can travel these same routes, enjoying the state's natural resources while getting glimpses of rich history and tradition on an official Pennsylvania water trail.

PENNSYLVANIA BOATING REGULATIONS

- One wearable, Coast Guard-approved life jacket (personal flotation device or PFD) in serviceable condition and of the appropriate size is required for each person in your boat. If your boat is 16 feet or longer, one throwable device (seat cushion or ring buoy) is required. Canoes & kayaks, regardless of length, are not required to carry a throwable device.

- Life jackets must be worn by all children 12 years old and younger on all boats 20 feet or less in length while under way, and on all canoes and kayaks. Others are strongly encouraged to wear a life jacket at all times on the water.
- Boaters are required by law to wear a life jacket on boats less than 16 feet in length or any canoe or kayak during the cold weather months from November 1 through April 30.
- All boats must display an anchor light (a white light visible at 360 degrees) when at anchor between sunset and sunrise. Boats can use a lantern or clip-on battery-powered unit to meet this requirement.

PADDLING SAFETY TIPS

- Wear your life jacket. Some 80 percent of all recreational boating fatalities happen to people who aren't wearing a life jacket.
- Expect to get wet. Even the best paddlers sometimes capsize or swamp their boats. Bring extra clothing in a waterproof bag.
- Be prepared to swim. If the water looks too hazardous to swim in, don't go paddling.
- If you capsize, hold on to your boat unless it presents a life-threatening situation. If floating in current, position yourself on the upstream side of the capsized boat.
- Be courteous to other boaters and anglers on the stream.
- Scout ahead whenever possible. Know the stream. Avoid surprises.
- Be prepared for the weather. Get a forecast before you go. Sudden winds and rain are common and can turn a pleasant trip into a risky, unpleasant venture.
- Wear wading shoes or tennis shoes with wool, polypropylene, pile or neoprene socks.
- Never take your boat near, or go over, a low-head dam. Dams are drowning machines and are dangerous to approach from upstream and downstream.
- Portage (carry) your boat around any section of water about which you feel uncertain.
- Never boat alone. Boating safety increases with numbers.
- Keep painter lines (ropes tied to the bow) and any other ropes coiled and secured.
- Never tie a rope to yourself or to another paddler, especially a child.
- Kneel to increase your stability before entering rougher water like a rapids.
- If you collide with an obstruction, lean toward it. This will usually prevent your capsizing or flooding the boat.
- File a float plan with a reliable person, indicating where you are going and when you will return. Remember to contact the person when you have returned safely.

LAUNCH PERMITS

Owners of unpowered boats (canoes, kayaks, rowboats, etc.) can launch their boats at PFBC lakes and access areas or at Pennsylvania state parks or forests if their boats display a PFBC launch use permit, boat registration, or Pennsylvania State Parks launch permit or mooring permit. Pennsylvania State Parks recognizes boat registrations and launch permits. The Commission does NOT recognize launch permits from other states. A PFBC launch permit can be purchased on the Commission's website. An unpowered boat may have a registration OR launch permit but is not required to have both.

HAZARDS ON THE WATER

Dams: Water going over a dam creates a back current, or undertow, that can pull a boat into the turbulence and capsize it. This hydraulic can often trap and hold a person or a boat. Hazards include the areas above and below the dam. Paddlers spot dams by looking downstream for a horizontal line across the water.

HAZARDS ON THE WATER

LOW-HEAD DAM: Secondary hydraulic, pool, hydraulic. This app includes: Fishing and Boating Regulations, Near Me Map, Mapping Feature, Trout Stocking Information, Fish Identification Tool, Trophy Case

MORE HAZARDS ON THE WATER

Current: Never underestimate the power of moving water. Boaters who are not sure that their boat or their ability is up to the prevailing conditions should stay off the water.

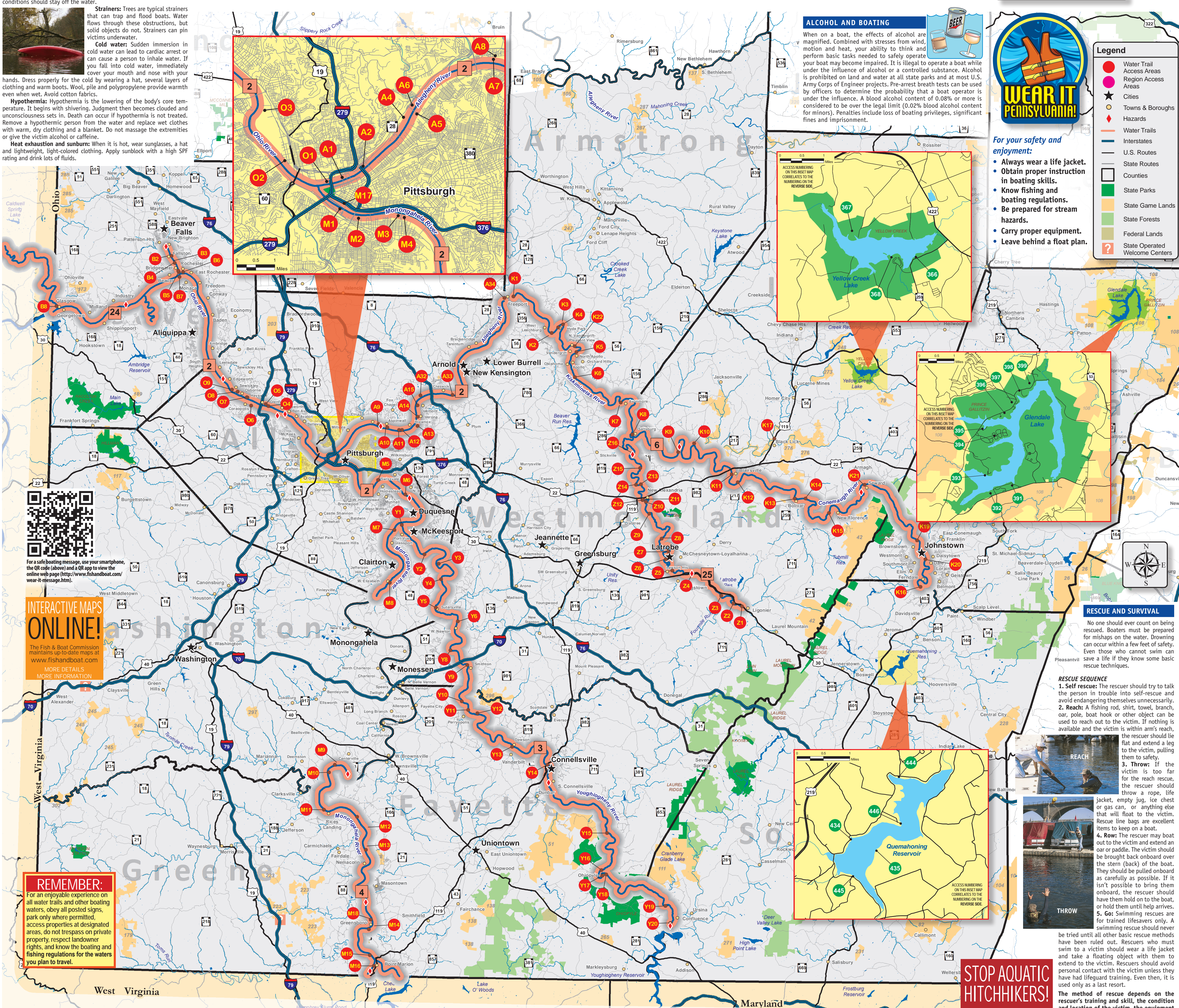
Strainers: Trees are typical strainers that can trap and flood boats. Water flows through these obstructions, but solid objects do not. Strainers can pin victims underwater.

Cold water: Sudden immersion in cold water can lead to cardiac arrest or can cause a person to inhale water. If you fall into cold water, immediately cover your mouth and nose with your hands. Dress properly for the cold by wearing a hat, several layers of clothing and warm boots.

Hypothermia: Hypothermia is the lowering of the body's core temperature. It begins with shivering. Judgment then becomes clouded and unconsciousness sets in. Death can occur if hypothermia is not treated.

Heat exhaustion and sunburn: When it is hot, wear sunglasses, a hat and lightweight, light-colored clothing. Apply sunblock with a high SPF rating and drink lots of fluids.

REGIONAL WATER TRAILS and other highlighted boating areas



ALCOHOL AND BOATING

When on a boat, the effects of alcohol are magnified. Combined with stresses from wind, motion and heat, your ability to think and perform basic tasks needed to safely operate your boat may be impaired. It is illegal to operate a boat while under the influence of alcohol or a controlled substance.



For your safety and enjoyment:

- Always wear a life jacket.
- Obtain proper instruction in boating skills.
- Know fishing and boating regulations.
- Be prepared for stream hazards.
- Carry proper equipment.
- Leave behind a float plan.

Legend

- Water Trail Access Areas (red circle)
- Region Access Areas (pink circle)
- Cities (black star)
- Towns & Boroughs (yellow star)
- Hazards (red diamond)
- Water Trails (blue line)
- Interstates (thick black line)
- U.S. Routes (thin black line)
- State Routes (dashed black line)
- Counties (black outline)
- State Parks (green square)
- State Game Lands (yellow square)
- State Forests (light green square)
- Federal Lands (orange square)
- State Operated Welcome Centers (red square)

Water Trails table with 5 rows: Three Rivers, Youghiogheny River, Upper Monongahela River, Kiski-Conemaugh River, Ohio River, Loyallanna Creek

NUMBERING CORRELATES WITH STATEWIDE WATER TRAIL NUMBERING.

SOUTHWEST REGION WATER TRAIL ACCESS AREAS

Within each Pennsylvania water trail is a network of access areas that are varied in their amenities and restrictions. This access information is provided in conjunction with the organizations who have provided these water trails in partnership with the Pennsylvania Fish & Boat Commission.

THREE RIVERS WATER TRAIL

Table listing access areas for Three Rivers Water Trail with columns for County, Waterway, Access Name, Ownership, Fee, P, F, S, P, L, R, D, T, M, A, B, C, E, G, H, I, J, K, L, M, N, O, P, Q, R, S, T, U, V, W, X, Y, Z

YOUGHIOGHENY RIVER WATER TRAIL

Table listing access areas for Youghiogheny River Water Trail with columns for County, Waterway, Access Name, Ownership, Fee, P, F, S, P, L, R, D, T, M, A, B, C, E, G, H, I, J, K, L, M, N, O, P, Q, R, S, T, U, V, W, X, Y, Z

UPPER MONONGAHELA RIVER WATER TRAIL

Table listing access areas for Upper Monongahela River Water Trail with columns for County, Waterway, Access Name, Ownership, Fee, P, F, S, P, L, R, D, T, M, A, B, C, E, G, H, I, J, K, L, M, N, O, P, Q, R, S, T, U, V, W, X, Y, Z

KISKI-CONEMAUGH WATER TRAIL

Table listing access areas for Kiski-Conemaugh Water Trail with columns for County, Waterway, Access Name, Ownership, Fee, P, F, S, P, L, R, D, T, M, A, B, C, E, G, H, I, J, K, L, M, N, O, P, Q, R, S, T, U, V, W, X, Y, Z

OHIO RIVER WATER TRAIL

Table listing access areas for Ohio River Water Trail with columns for County, Waterway, Access Name, Ownership, Fee, P, F, S, P, L, R, D, T, M, A, B, C, E, G, H, I, J, K, L, M, N, O, P, Q, R, S, T, U, V, W, X, Y, Z

LOYALLANNA CREEK WATER TRAIL

Table listing access areas for Loyallanna Creek Water Trail with columns for County, Waterway, Access Name, Ownership, Fee, P, F, S, P, L, R, D, T, M, A, B, C, E, G, H, I, J, K, L, M, N, O, P, Q, R, S, T, U, V, W, X, Y, Z

RESCUE AND SURVIVAL

No one should ever count on being rescued. Boaters must be prepared for mishaps on the water. Drowning can occur within a few feet of safety. Even those who know how to swim can save a life if they know some basic rescue techniques.

RESCUE SEQUENCE

- 1. Self rescue: The rescuer should try to talk the person in trouble into self-rescue and avoid endangering themselves unnecessarily.
- 2. Reach: A fishing rod, shirt, towel, branch, oar, pole, boat hook or other object can be used to reach out to the victim. If nothing is available and the victim is within arm's reach, the rescuer should be flat and extend a leg to the victim, pulling them to safety.
- 3. Throw: If the victim is too far for the reach rescue, the rescuer should throw a rope, life jacket, empty jug, ice chest or gas can, or anything else that will float to the victim. Rescue line bags are excellent items to keep on a boat.
- 4. Row: The rescuer may boat out to the victim and extend an oar or paddle. The victim should be brought back onboard over the stern (back) of the boat. They should be pulled onboard as carefully as possible. If it isn't possible to bring them onboard, the rescuer should have them hold on to the boat, or hold them until help arrives.
- 5. Go: Swimmers rescues are for trained lifesavers only. A swimming rescue should never be tried until all other basic rescue methods have been ruled out. Rescuers who must swim to a victim should wear a life jacket and take a floating object with them to extend to the victim. Rescuers should avoid personal contact with the victim unless they have had lifeguard training. Even then, it is used only as a last resort.

STOP AQUATIC HITCHHIKERS!

Help reduce the spread of Aquatic Invasive Species. The method of rescue depends on the rescuer's training and skill, the condition and location of the victim, the equipment available and what additional support is available at the scene.

ACCESS AREAS

PARKING Available parking is indicated as L, S or R. L indicates larger parking lots (10 spaces or more)...

HP-HORSEPOWER/LIMITS The horsepower for some waterways is classified as unlimited, because there is no horsepower-restricting regulations on the waterways...

FEES A dot (•) under "FE" designates that use of the facility is permitted by payment of a user fee. Powerboats properly registered with the Pennsylvania Fish & Boat Commission may be launched at Commission facilities...

DOCKS "Dock" refers to the availability of a loading dock. This does not indicate availability of mooring docks or slips.

LAUNCH RAMPS Where a launch ramp is indicated, a boat may be launched directly from a trailer by backing down a ramp. Quality, construction, percent of slope and water depth at ramps vary, and every ramp is not suitable or intended for the launch of every craft...

ACCESSIBILITY FOR THE DISABLED Many areas listed here furnish, to varying degrees, recreational facilities and accommodations for those with disabilities. Persons with special needs are encouraged to call the access owner for specific information on what is available at any listed area.

FISHING FROM A BOAT All motorboats must be registered, regardless of where they launch. Unpowered boats using Pennsylvania Fish & Boat Commission access areas or Pennsylvania state parks or forests must either be registered or display a valid launch permit...

TROUT STOCKING The Commission stocks about 4.2 million lake-sized trout each year in about 5,000 miles of coldwater streams and over 100 trout lakes. Stocking occurs during all four seasons, although most of the interest builds during spring.

FISHING LICENSES A license, which must be displayed on an outer garment while fishing, is required of all people 16 years of age and older. Licenses may be purchased at approximately 1,000 license issuing agencies across the state.

FOR MORE INFORMATION For more detailed information on specially regulated areas, and fishing and boating regulations and laws, see the current Pennsylvania Fishing Summary and the Boating Handbook.

SAFETY AND SECURITY Report homeland security or terrorism tips to the PA State Police (www.psp.pa.gov). Phone: 1-888-292-1919 or e-mail: sp-intelligence@pa.gov.

BOATER'S CHECKLIST FOR SAFE AND SECURE WATERWAYS Keep your distance from all military, cruise-line and commercial shipping. Do not approach within 100 yards and slow to minimum speed while in military supply areas.

Observe and avoid all security zones. Avoid commercial port operations that are especially noisy that involve tugboats, cranes or pileum facilities. Observe and avoid other restricted areas. Volunteers will be perceived as a threat, and will face a quick, determined and severe response.

Do not stop or anchor beneath bridges or in the channel. If you do, expect to be boarded by law enforcement officials. Keep a sharp eye out for anything that looks peculiar or out of the ordinary. Report all activities that seem suspicious to the local authorities.

Always secure and lock your boat when you are not on board. Never leave your boat accessible to others. Always take the keys to the boat with you.

UNIVERSITY ACCESSIBLE Areas where persons with disabilities are accommodated. Call the access owner for the Pennsylvania Department of Environmental Protection for details. Includes all tributary waters entering ocean or water defined in the Wild Brook Trout Enhancement Program.

UNIVERSITY ACCESSIBLE Areas where persons with disabilities are accommodated. Call the access owner for the Pennsylvania Department of Environmental Protection for details. Includes all tributary waters entering ocean or water defined in the Wild Brook Trout Enhancement Program.

UNIVERSITY ACCESSIBLE Areas where persons with disabilities are accommodated. Call the access owner for the Pennsylvania Department of Environmental Protection for details. Includes all tributary waters entering ocean or water defined in the Wild Brook Trout Enhancement Program.

UNIVERSITY ACCESSIBLE Areas where persons with disabilities are accommodated. Call the access owner for the Pennsylvania Department of Environmental Protection for details. Includes all tributary waters entering ocean or water defined in the Wild Brook Trout Enhancement Program.

UNIVERSITY ACCESSIBLE Areas where persons with disabilities are accommodated. Call the access owner for the Pennsylvania Department of Environmental Protection for details. Includes all tributary waters entering ocean or water defined in the Wild Brook Trout Enhancement Program.

UNIVERSITY ACCESSIBLE Areas where persons with disabilities are accommodated. Call the access owner for the Pennsylvania Department of Environmental Protection for details. Includes all tributary waters entering ocean or water defined in the Wild Brook Trout Enhancement Program.

UNIVERSITY ACCESSIBLE Areas where persons with disabilities are accommodated. Call the access owner for the Pennsylvania Department of Environmental Protection for details. Includes all tributary waters entering ocean or water defined in the Wild Brook Trout Enhancement Program.

UNIVERSITY ACCESSIBLE Areas where persons with disabilities are accommodated. Call the access owner for the Pennsylvania Department of Environmental Protection for details. Includes all tributary waters entering ocean or water defined in the Wild Brook Trout Enhancement Program.

UNIVERSITY ACCESSIBLE Areas where persons with disabilities are accommodated. Call the access owner for the Pennsylvania Department of Environmental Protection for details. Includes all tributary waters entering ocean or water defined in the Wild Brook Trout Enhancement Program.

REGIONAL FISHING & BOATING OPPORTUNITIES

FISH & BOAT COMMISSION STATE FISH HATCHERIES Table with columns: COUNTY, NAME, TYPE, LOCATION, etc.

IMPOUNDMENT & LAKE SPECIAL REGULATION AREAS Table with columns: COUNTY, NAME, REGULATION TYPE, NEAREST TOWN, etc.

STOCKED TROUT WATERS OPEN TO YEAR-ROUND FISHING Table with columns: COUNTY, WATERWAY/LIMITS, etc.

CLASS A WILD TROUT STREAMS Table with columns: COUNTY, WATERWAY/LIMITS, etc.

WATER POLLUTION REPORT IT! 855-FISH-KILL Table with columns: COUNTY, NAME, etc.

STOCKED TROUT WATERS Table with columns: COUNTY, WATERWAY/LIMITS, etc.

STOCKED TROUT WATERS Table with columns: COUNTY, WATERWAY/LIMITS, etc.

STOCKED TROUT WATERS Table with columns: COUNTY, WATERWAY/LIMITS, etc.

STOCKED TROUT WATERS Table with columns: COUNTY, WATERWAY/LIMITS, etc.

STOCKED TROUT WATERS Table with columns: COUNTY, WATERWAY/LIMITS, etc.

STOCKED TROUT WATERS Table with columns: COUNTY, WATERWAY/LIMITS, etc.

STOCKED TROUT WATERS Table with columns: COUNTY, WATERWAY/LIMITS, etc.

STOCKED TROUT WATERS Table with columns: COUNTY, WATERWAY/LIMITS, etc.

STOCKED TROUT WATERS Table with columns: COUNTY, WATERWAY/LIMITS, etc.

STOCKED TROUT WATERS Table with columns: COUNTY, WATERWAY/LIMITS, etc.

STOCKED TROUT WATERS Table with columns: COUNTY, WATERWAY/LIMITS, etc.

STOCKED TROUT WATERS Table with columns: COUNTY, WATERWAY/LIMITS, etc.

STOCKED TROUT WATERS Table with columns: COUNTY, WATERWAY/LIMITS, etc.

STOCKED TROUT WATERS Table with columns: COUNTY, WATERWAY/LIMITS, etc.

STOCKED TROUT WATERS Table with columns: COUNTY, WATERWAY/LIMITS, etc.

STOCKED TROUT WATERS Table with columns: COUNTY, WATERWAY/LIMITS, etc.

STOCKED TROUT WATERS Table with columns: COUNTY, WATERWAY/LIMITS, etc.

STOCKED TROUT WATERS Table with columns: COUNTY, WATERWAY/LIMITS, etc.

STOCKED TROUT WATERS Table with columns: COUNTY, WATERWAY/LIMITS, etc.

STOCKED TROUT WATERS Table with columns: COUNTY, WATERWAY/LIMITS, etc.

STOCKED TROUT WATERS Table with columns: COUNTY, WATERWAY/LIMITS, etc.

WHO MUST WEAR A LIFE JACKET? All water skiers and anyone towed behind vessels, personal watercraft operators and passengers and sailboarders (windsurfers). Inflatables life jackets are not acceptable for these activities.

PURCHASE YOUR MULTI-YEAR FISHING LICENSE TODAY! Includes a map of Pennsylvania and a list of license types.

STOCKED TROUT WATERS OPEN TO YEAR-ROUND FISHING Table with columns: COUNTY, WATERWAY/LIMITS, etc.

CLASS A WILD TROUT STREAMS Definition of Class A Streams - Streams which support a population of naturally produced trout of sufficient size and abundance to support a long-term and rewarding sport fishery.

WATER POLLUTION REPORT IT! 855-FISH-KILL Table with columns: COUNTY, NAME, etc.

STOCKED TROUT WATERS Table with columns: COUNTY, WATERWAY/LIMITS, etc.

STOCKED TROUT WATERS Table with columns: COUNTY, WATERWAY/LIMITS, etc.

STOCKED TROUT WATERS Table with columns: COUNTY, WATERWAY/LIMITS, etc.

STOCKED TROUT WATERS Table with columns: COUNTY, WATERWAY/LIMITS, etc.

STOCKED TROUT WATERS Table with columns: COUNTY, WATERWAY/LIMITS, etc.

STOCKED TROUT WATERS Table with columns: COUNTY, WATERWAY/LIMITS, etc.

STOCKED TROUT WATERS Table with columns: COUNTY, WATERWAY/LIMITS, etc.

STOCKED TROUT WATERS Table with columns: COUNTY, WATERWAY/LIMITS, etc.

STOCKED TROUT WATERS Table with columns: COUNTY, WATERWAY/LIMITS, etc.

STOCKED TROUT WATERS Table with columns: COUNTY, WATERWAY/LIMITS, etc.

STOCKED TROUT WATERS Table with columns: COUNTY, WATERWAY/LIMITS, etc.

STOCKED TROUT WATERS Table with columns: COUNTY, WATERWAY/LIMITS, etc.

STOCKED TROUT WATERS Table with columns: COUNTY, WATERWAY/LIMITS, etc.

STOCKED TROUT WATERS Table with columns: COUNTY, WATERWAY/LIMITS, etc.

STOCKED TROUT WATERS Table with columns: COUNTY, WATERWAY/LIMITS, etc.

STOCKED TROUT WATERS Table with columns: COUNTY, WATERWAY/LIMITS, etc.

STOCKED TROUT WATERS Table with columns: COUNTY, WATERWAY/LIMITS, etc.

STOCKED TROUT WATERS Table with columns: COUNTY, WATERWAY/LIMITS, etc.

STOCKED TROUT WATERS Table with columns: COUNTY, WATERWAY/LIMITS, etc.

STOCKED TROUT WATERS Table with columns: COUNTY, WATERWAY/LIMITS, etc.

STOCKED TROUT WATERS Table with columns: COUNTY, WATERWAY/LIMITS, etc.

UNIVERSITY ACCESSIBLE Table with columns: COUNTY, NAME, etc.

UNIVERSITY ACCESSIBLE Table with columns: COUNTY, NAME, etc.

UNIVERSITY ACCESSIBLE Table with columns: COUNTY, NAME, etc.

UNIVERSITY ACCESSIBLE Table with columns: COUNTY, NAME, etc.

UNIVERSITY ACCESSIBLE Table with columns: COUNTY, NAME, etc.

UNIVERSITY ACCESSIBLE Table with columns: COUNTY, NAME, etc.

UNIVERSITY ACCESSIBLE Table with columns: COUNTY, NAME, etc.

UNIVERSITY ACCESSIBLE Table with columns: COUNTY, NAME, etc.

UNIVERSITY ACCESSIBLE Table with columns: COUNTY, NAME, etc.

UNIVERSITY ACCESSIBLE Table with columns: COUNTY, NAME, etc.

UNIVERSITY ACCESSIBLE Table with columns: COUNTY, NAME, etc.

UNIVERSITY ACCESSIBLE Table with columns: COUNTY, NAME, etc.

UNIVERSITY ACCESSIBLE Table with columns: COUNTY, NAME, etc.

UNIVERSITY ACCESSIBLE Table with columns: COUNTY, NAME, etc.

UNIVERSITY ACCESSIBLE Table with columns: COUNTY, NAME, etc.

UNIVERSITY ACCESSIBLE Table with columns: COUNTY, NAME, etc.

UNIVERSITY ACCESSIBLE Table with columns: COUNTY, NAME, etc.

UNIVERSITY ACCESSIBLE Table with columns: COUNTY, NAME, etc.

UNIVERSITY ACCESSIBLE Table with columns: COUNTY, NAME, etc.

UNIVERSITY ACCESSIBLE Table with columns: COUNTY, NAME, etc.

UNIVERSITY ACCESSIBLE Table with columns: COUNTY, NAME, etc.

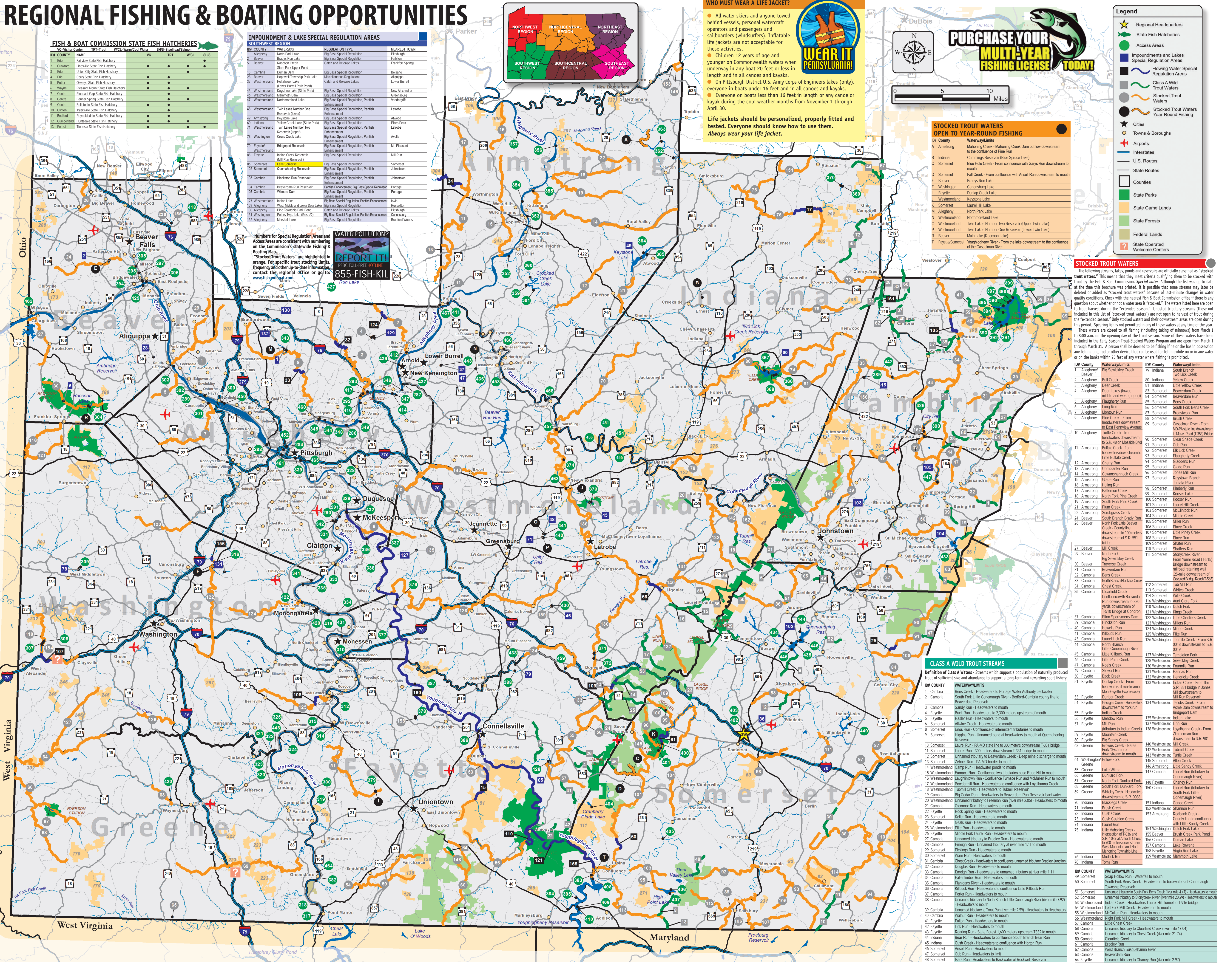
UNIVERSITY ACCESSIBLE Table with columns: COUNTY, NAME, etc.

UNIVERSITY ACCESSIBLE Table with columns: COUNTY, NAME, etc.

UNIVERSITY ACCESSIBLE Table with columns: COUNTY, NAME, etc.

UNIVERSITY ACCESSIBLE Table with columns: COUNTY, NAME, etc.

UNIVERSITY ACCESSIBLE Table with columns: COUNTY, NAME, etc.



To purchase fishing licenses, visit www.GoneFishingPa.com