

# This Fish Has a Scale to Tell

Fish bodies are protected by scales. Scales get bigger when the fish grows. New scales are added to the outside edge as the fish grows. Fish scales add many rings (two, three or up to 20) each year. Lots of rings mean lots of growth. Fishes grow mostly in the warm months. In Pennsylvania, fish don't grow much in the winter. Rings are very close together in the winter. Sometimes the scale doesn't even add a whole ring. Some winter rings may look like they are broken. Fish biologists age fish by counting each time the fish grew slowly. Biologists count each time the rings come close together as one year. That can be very hard to do. It takes lots of practice.

Biologists age scales to learn more about individual fish, groups of fish, and their habitat.

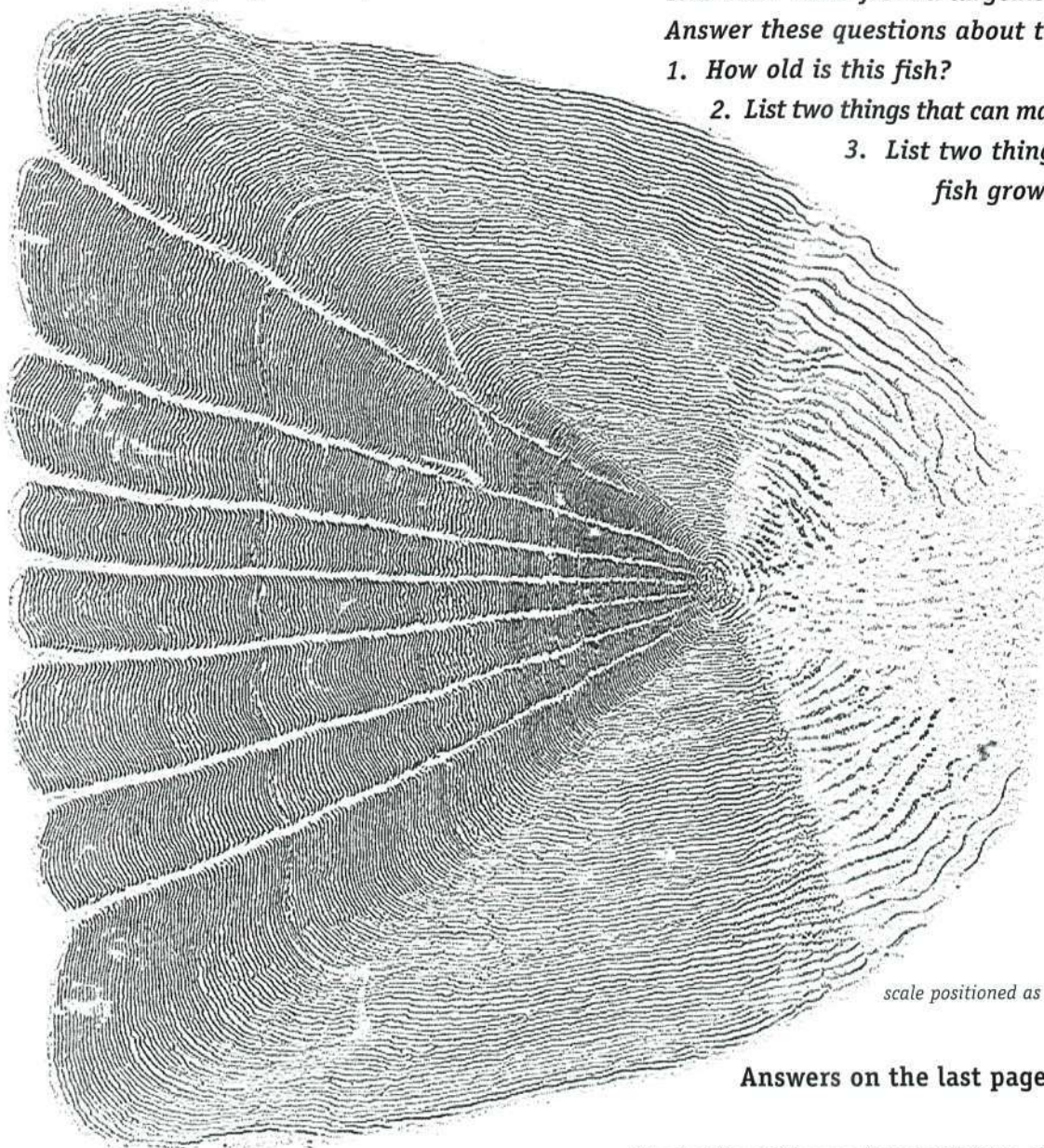


They learn about the amount of food available. They also look at how many fish are certain ages. Small fish grow into big fish. If there aren't enough young fish now, there might not be enough big fish in a few years. Age information is used to help make decisions about size limits and stocking.

*This scale came from a largemouth bass.*

*Answer these questions about the scale:*

- 1. How old is this fish?*
- 2. List two things that can make fish grow slowly?*
- 3. List two things that can make fish grow fast?*



*scale positioned as shown in photograph above*

**Answers on the last page of this newsletter.**



Pennsylvania League of Angling Youth  
 Pennsylvania Fish & Boat Commission  
 P.O. Box 67000  
 Harrisburg, PA 17106-7000

**LIFE JACKETS**  
*They Float*  
**YOU DON'T!**



# PLAY, MORE THAN A NEWSLETTER!

You can look forward to seeing the Pennsylvania League of Angling Youth (PLAY) newsletter in *PA Angler & Boater* four times each year. But to get the full benefits of membership in PLAY, you need to complete the coupon below. Full membership in PLAY is only \$3.00 per year. Members receive the PLAY Newsletter, a collectible patch, tacklebox stickers, a good luck fishing hook and several activity pages. Sign up your favorite youngster for PLAY or be prepared to share your copy of

*PA Angler & Boater!*  
**MAKES A GREAT GIFT, TOO!**

## PATCHES!

Limited-edition patches sell for \$4.71 each plus 29 cents state sales tax (only items shipped to PA addresses) for a total of \$5 each. Please include \$2 for shipping orders under \$10 and \$3 for shipping orders of \$10 or more.



|                 |  |  |
|-----------------|--|--|
|                 | actual size=4 3/8" wide by 3 3/4" wide |  |
|                 | 1997 Rainbow darter patch              |  |
|                 | 1998 Copperhead snake patch            |  |
|                 | 1999 Leopard frog patch                |  |
| Shipping total  |  |  |
| Amount enclosed |  |  |

Name \_\_\_\_\_ Age \_\_\_\_\_

Address \_\_\_\_\_

City \_\_\_\_\_ State \_\_\_\_\_ Zip \_\_\_\_\_

Make checks payable to: Pennsylvania Fish & Boat Commission. Mail to: Pennsylvania Fish & Boat Commission, P.O. Box 67000, Harrisburg, PA 17106-7000.

## SUBSCRIBE TO

# PLAY

Pennsylvania • League • of • Angling • Youth

The Pennsylvania League of Angling Youth is an educational program designed to reach youngsters. Members receive a colorful sew-on patch, quarterly newsletter, publications, access to the PLAY Correspondence Center and more.

*It's a bargain at only \$3.00 a year. Sign up today!*

Name \_\_\_\_\_ Age \_\_\_\_\_

Address \_\_\_\_\_

City \_\_\_\_\_ State \_\_\_\_\_ Zip \_\_\_\_\_

Make checks payable to: Pennsylvania Fish & Boat Commission. Mail to: Pennsylvania Fish & Boat Commission, P.O. Box 67000, Harrisburg, PA 17106-7000.

**This issue's Answer Key**

"This Fish Has a Scale to Tell" answers: 1. This fish is three years old. 2. Cold water temperature, lack of food, stress from pollution, spawning stress. 3. Water temperatures that are just right, lots of food. "Catch and Release" answers: 1. Play fish quickly. 2. Remove the hooks from the mouth quickly. 3. A landing net can help you boat fish easily. 4. If you must handle fish, wet your hands. 5. Keep the fish in the water as much as possible. 6. To revive your fish, hold the fish upright underwater. 7. Consider using barbless hooks. *Special message: PUT THEM BACK ALIVE!* "Carmen Fishieco" answer: Horseshoe Curve

