

ALL ABOUT FISH!

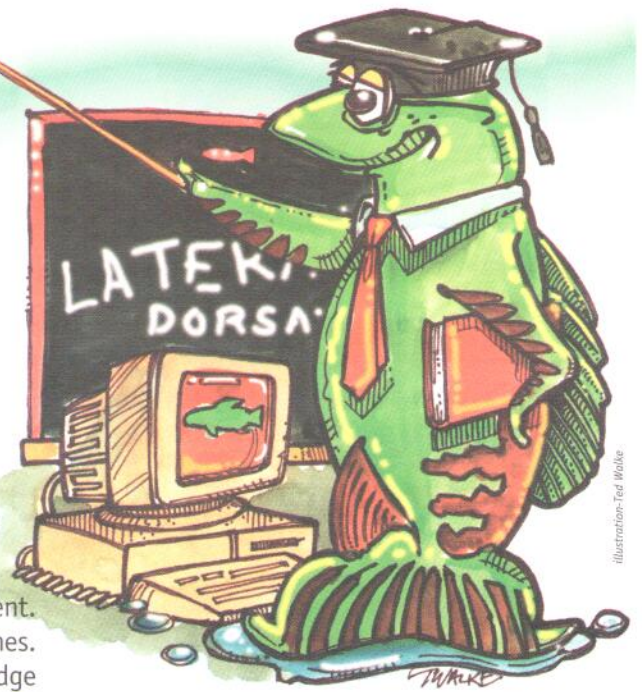


Illustration: Ted Wake

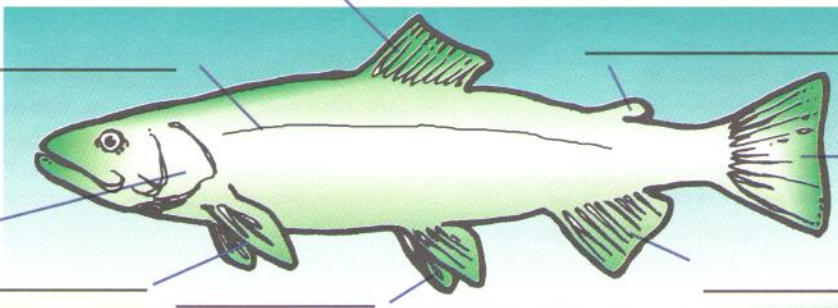
Dorsal fin, lateral line, spiny rays...what are these?

See how many parts of the fish you can name below. The two are different. One has spiny rays in its fins and the other has soft rays. Rays are like bones. They give support to the fins. Spiny ones stick out beyond the fin's edge and are sharp and large. If you hold a fish with these the wrong way – ouch! Soft rays don't stick out and cause fewer band-aids on angler's fingers.

Write the name of the body part in the correct blank for both the spiny and soft-rayed fishes. The names for each type of fish are listed below.

Soft-rayed Fish

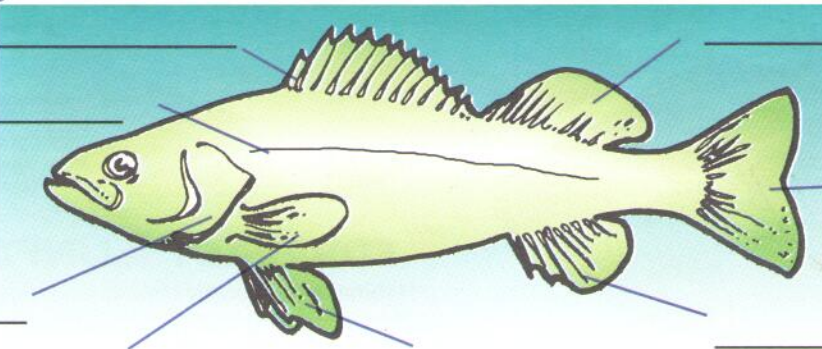
(Trout)



- Adipose Fin
- Anal Fin
- Caudal Fin
- Dorsal Fin
- Gill Cover
- Lateral Line
- Pectoral Fins
- Pelvic Fins

Spiny-rayed Fish

(Yellow Perch)



- Anal Fin
- Caudal Fin
- First Dorsal Fin (spiny)
- Gill Cover
- Lateral Line
- Pectoral Fins
- Pelvic Fins
- Second Dorsal Fin (soft)

WHAT THE NAMES MEAN

- Dorsal (DOR-sal) –back
- Pectoral (PECK-toe-ral) –relating to the arm or upper body appendage joint
- Pelvic (PEL-vic) –relating to the leg or lower body appendage joint

- Adipose (A-da-poes) –relating to animal fat
- Lateral (LA-ter-l) –on the side
- Caudal (COD-l) –relating to a tail
- Anal (AA-nl) –near the anus

