



PLAY

Fall
2022

Pennsylvania • League • of • Angling • Youth

Be OPEN to Something New

What comes to mind when you hear the term open-faced spin fishing? Do you think of someone with an open mouth, spinning around in circles while fishing? Or, do you think of fishing gear?

Open-faced spin fishing is a style of fishing gear you may have seen before. The fishing line is visible on open-faced gear. This style can usually hold more fishing line and a heavier weight line than closed-face gear.

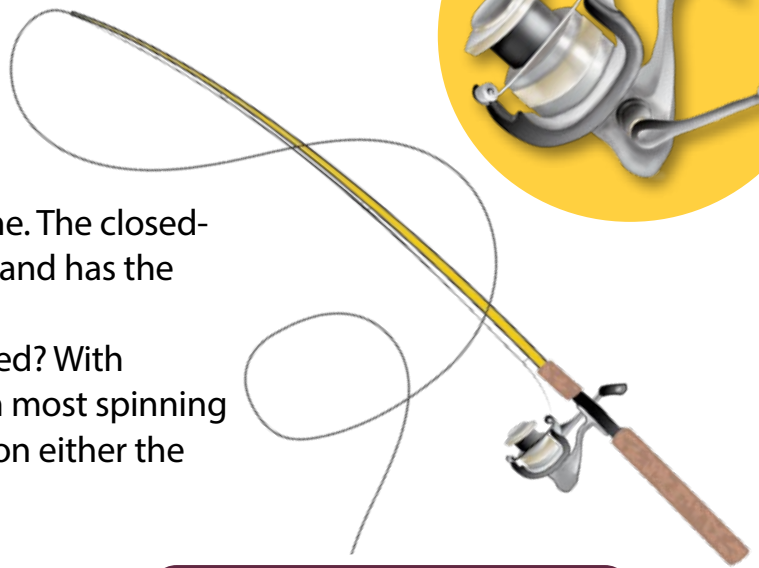
Be open to a new experience. Give open-faced spinning gear a whirl. This issue of *PLAY* will cast out some information about spin fishing. Reel-y!



Open-faced Spinning Gear

Look at the spin fishing gear. The open-faced and closed-faced styles have different reels. The open-faced reel is attached below the rod and has a **wire bail** to hold the fishing line. The closed-faced reel is attached above the rod and has the fishing line inside a **spool cover**.

Are you right-handed or left-handed? With spinning gear, it does not matter. On most spinning reels, the reel handle can be placed on either the right or left sides to fit your needs.



Open-faced Reel



Closed-faced Reel



Spincasting



1. Hold the fishing **rod** near your waist with the **reel** facing down.
2. Hook the fishing **line** with your forefinger. Then, open the **wire bail**.
3. Pull the fishing **rod tip** back towards your shoulder and quickly bring it forward.
4. Let go of the fishing **line** with your finger as the fishing **rod** comes forward.
5. While pointing the fishing **rod tip** at your target, watch the line spin off the reel.

Lures for Open-faced Spinning Gear

Lures come in many colors, shapes, sizes, and weights. Smaller lures work great for panfish and trout. Larger lures are best for bass, Muskellunge, and Walleyes. Here are some types of lures you may want to try with open-faced spinning gear:

- Spinners and spinnerbaits have a metal blade that flashes and vibrates when retrieved.
- Spoons wobble to look like small baitfish.
- Crankbaits and jerkbaits imitate small minnows.
- Surface plugs and poppers break the water's surface to attract gamefish.

Open-faced Rigs for Live and Artificial Baits

Most types of rigs work for open-faced reels. Go to **fishandboat.com** and search "Putting It All Together" to learn about topwater, mid-water, and bottom rigs.



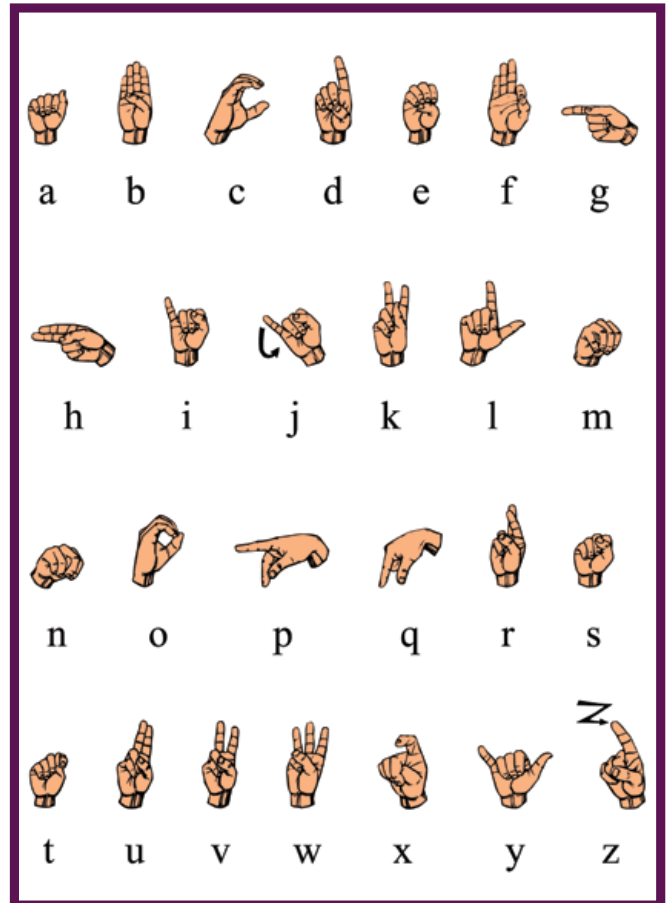
Learn More

Whether testing new gear, catching a new fish species, or trying a new fishing spot, keep your head from spinning by visiting **fishandboat.com**.

A New Spin on Fill-in-the-Blanks

September is Deaf Awareness Month, and September 23 is International Day of Sign Languages. Using the American Sign Language (ASL) alphabet in the box to the right, fill in the blanks to see if you can remember what you learned about spin fishing in this issue of *PLAY*.

ASL Alphabet



1. An open-faced reel has a



2. A closed-faced reel has a



3. Spinning reels are mounted below the



4. Many types of work great to catch different fish.



Answer Key: 1. wire bail; 2. spool cover; 3. rod; 4. lures



Produced by: the Bureau of Outreach, Education and Marketing
Written by: Dee Fisher
Editor: Spring Gearhart
Design and illustrations: Andrea Feeny
Photos: Dee Fisher, Ds13 at English Wikipedia, Public domain, via Wikimedia Commons, Janelle Howard, and PFBC archives
 © Pennsylvania Fish and Boat Commission