

Fishing High Tech



Fishing gear has seen many changes in the last 100 years.

Your boat...
...it's the hub
of location.

Your location through G.P.S.



The fish's location through sonar

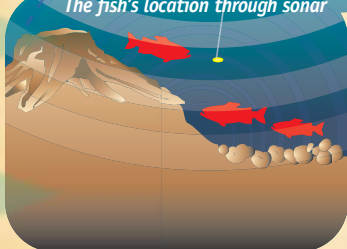
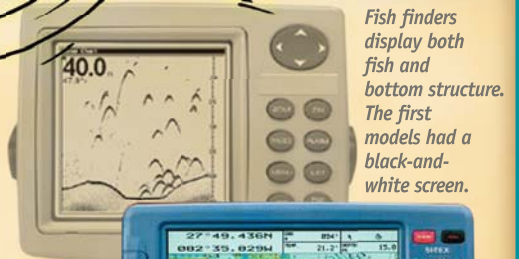


illustration by Ted Walke

Many changes happened just after World War II. Sonar was first invented for use in the Navy. Anglers then adapted it for use in "fish finders." They check the depth of the water. They can also see if fish are below your boat. New types of plastics were also invented. One type was the fishing line used by almost every angler today. Other lures were made of new hard and soft plastics. Today, some new inventions stretch the imagination. Just think of using a video camera to look underwater. Now you can. You might even see if the fish are biting!



Fish finders display both fish and bottom structure. The first models had a black-and-white screen.

Global Positioning Systems (G.P.S.) are also available. They provide mapping and show your boat's location.



Some of these models combine both fish finder and G.P.S. as one unit.