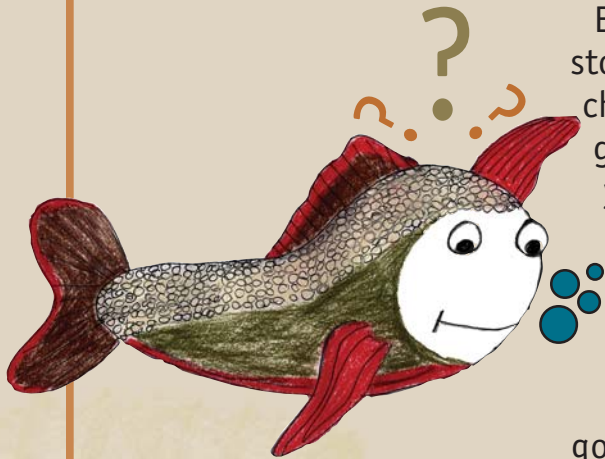


# Choosing Your Search Bait



Enter any sporting goods store and it seems that the choices of fishing tackle go on for miles. How do you choose the best search bait for your fall fishing? First, narrow your choices to the following:

- Inline spinners are a good choice for anglers who are just learning to use artificial lures. They can be fished at many depths. Choose a 1/16-ounce inline spinner to start your collection.

- If you are fishing shallow water, choose a 2-inch crankbait in natural colors such as silver, minnow or shad.

- Buzzbaits in the 1/4-ounce size are best used for fishing on the surface in early morning hours. They are also great when fishing just after dark.

- Spinnerbaits are a great all-around lure. They can be used at any depth. Start with a 1/4-ounce spinnerbait.

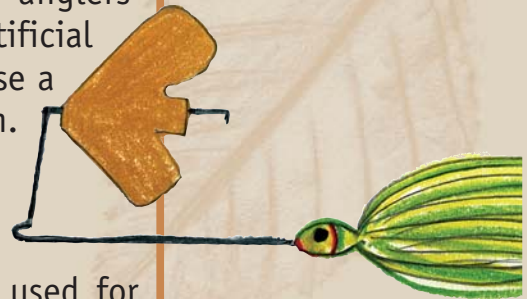
Spinnerbaits, inline spinners and buzzbaits are best in white, silver, gold and chartreuse.

**Have fun fall fishing!**

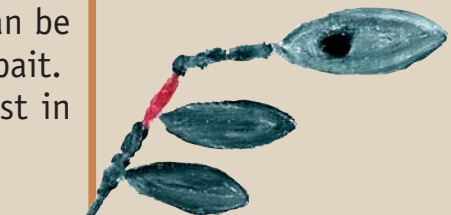
This PLAY Newsletter's author is Dennis Tubbs, the Commission's Aquatic Resources Program Specialist for the Southwest Region.



**Inline Spinner**



**Buzzbait**



**Spinnerbait**



**Crankbait**