

Lake Erie Fish Research and Patrol by Boat—Then

Lake Erie has 735 square miles of water within Pennsylvania's boundaries. Researching fish populations and enforcing the laws have always been tough. From 1866 to 1907, PFBC did not have a boat that could effectively patrol or study the lake.

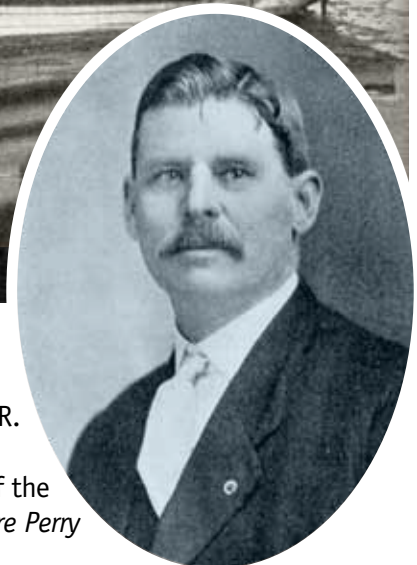
Then, the Commission designed and built a tugboat in 1908 named the *Commodore Perry*. The *Commodore Perry* provided the law enforcement that the lake needed. Illegal fishing activities were almost stopped within a year of patrolling the lake.

The *Commodore Perry* was also used by fisheries biologists to collect fish and sample areas of the lake that were not previously possible to sample. The boat provided many services to Lake Erie and that tradition is continued today using more modern vessels.

The *Commodore Perry* was 43 gross tons, 62 feet long and 15.7 feet wide with a depth of 6.7 feet. The engine could generate 80 horsepower and obtain a top speed of over 12 miles per hour.



Fishing boats at Erie



Jeremiah R. Dirscoll,
Captain of the
Commodore Perry