

County of Mouth	Stream Name	Tributary To	Wild Trout Limits	Site River-mile ●	Species	Catch	Length (inches)
Adams	Clear Run	Carbaugh Run	Headwaters to mouth	0.00	Brook	108	2-8



**EXHIBIT H**



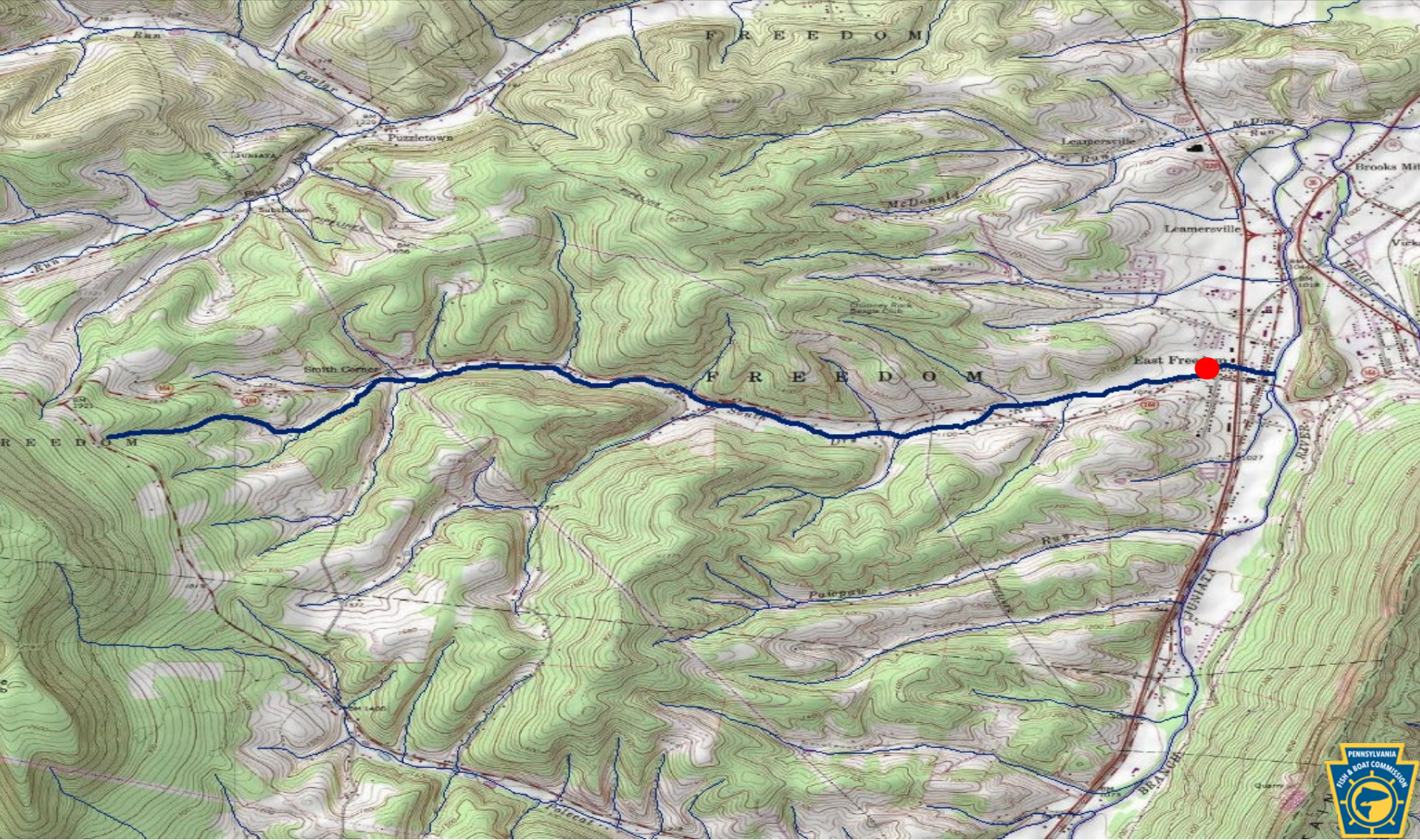
County of Mouth	Stream Name	Tributary To	Wild Trout Limits	Site River-mile ●	Species	Catch	Length (inches)
Adams	Saw Mill Run	Carbaugh Reservoir	Headwaters to mouth	0.12	Brook	12	4-7



County of Mouth	Stream Name	Tributary To	Wild Trout Limits	Site River-mile ●	Species	Catch	Length (inches)
Bedford	UNT to Bank Run (RM 0.28)	Bank Run	Headwaters to mouth	0.00	Brown	21	2-3



County of Mouth	Stream Name	Tributary To	Wild Trout Limits	Site River-mile ●	Species	Catch	Length (inches)
Blair	South Dry Run	Frankstown Branch Juniata River	Headwaters to mouth	0.26	Brown	16	2-12



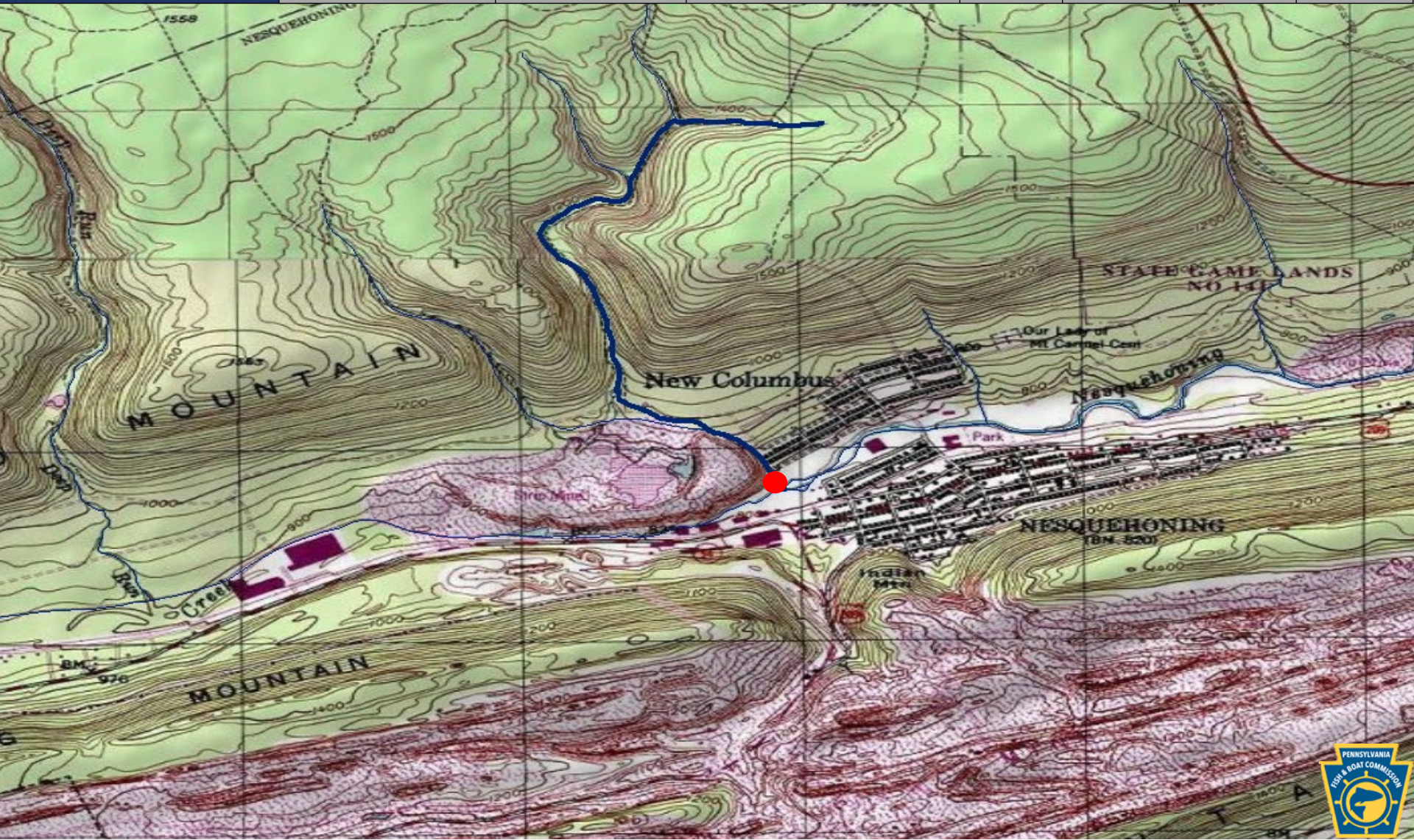
County of Mouth	Stream Name	Tributary To	Wild Trout Limits	Site River-mile ●	Species	Catch	Length (inches)
Blair	Township Run	Frankstown Branch Juniata River	Headwaters to mouth	0.09	Brown	4	2-6



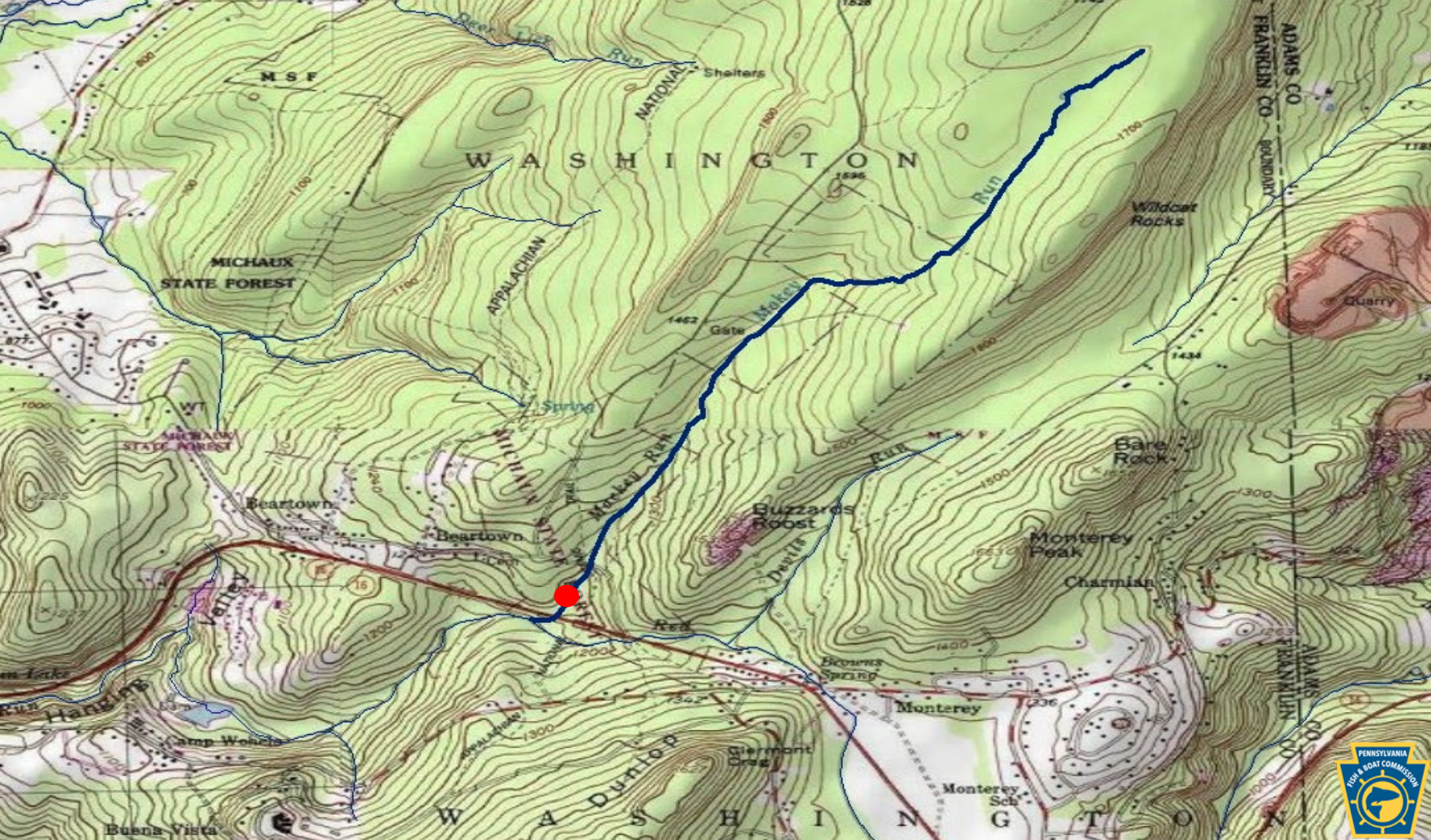
County of Mouth	Stream Name	Tributary To	Wild Trout Limits	Site River-mile ●	Species	Catch	Length (inches)
Cambria	UNT (RM 0.37) to UNT to Laurel Run (RM 5.35)	UNT to Laurel Run (RM 5.35)	Headwaters to mouth	0.00	Brook	15	2-9



County of Mouth	Stream Name	Tributary To	Wild Trout Limits	Site River-mile ●	Species	Catch	Length (inches)
Carbon	UNT to Nesquehoning Creek (First Hollow Creek)	Nesquehoning Creek	Headwaters to mouth	0.01	Brook Brown	97 2	1-7 4-9

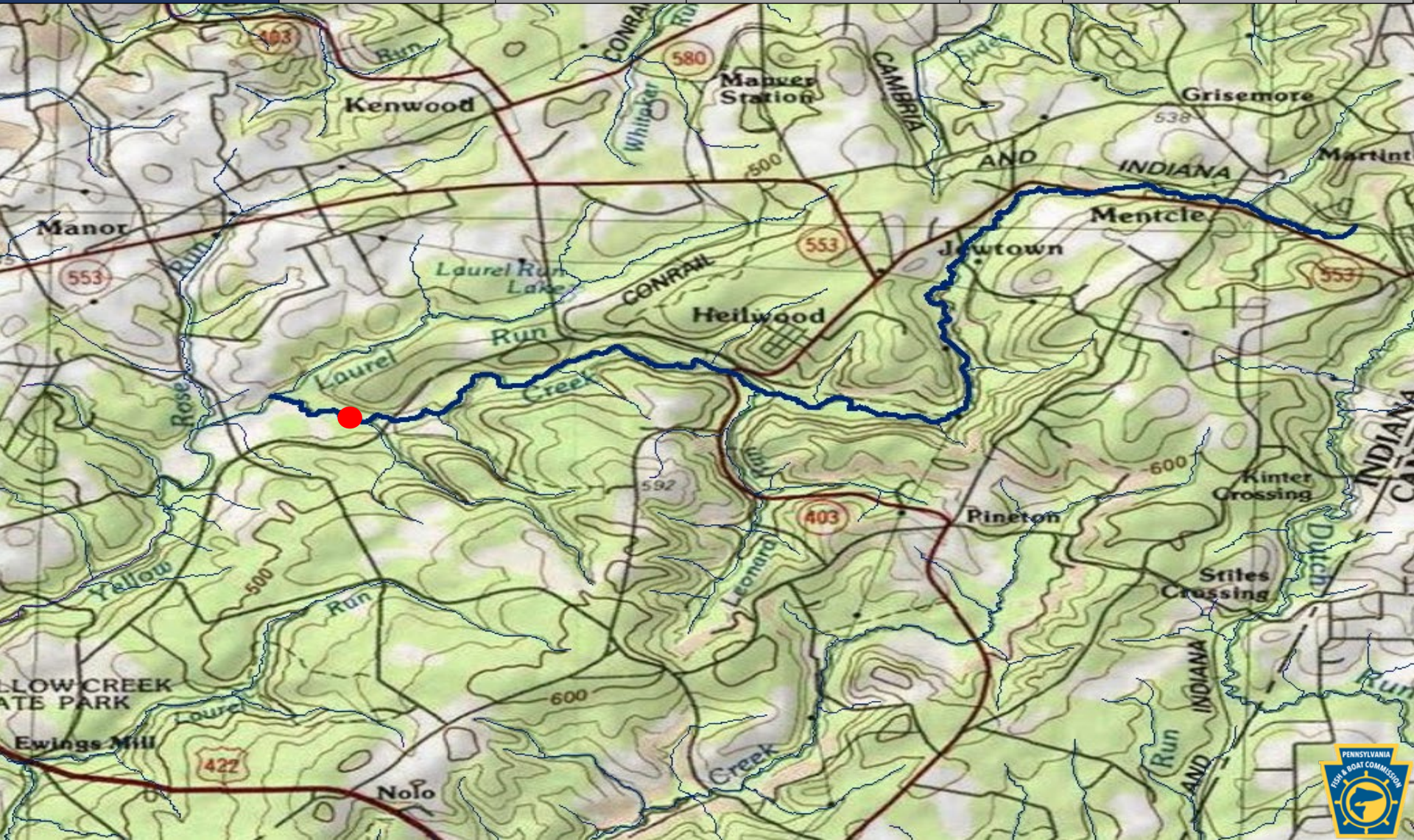


County of Mouth	Stream Name	Tributary To	Wild Trout Limits	Site River-mile <span style="color: red;">●</span>	Species	Catch	Length (inches)
Franklin	Mackey Run	Red Run	Headwaters to mouth	0.06	Brook	16	2-5

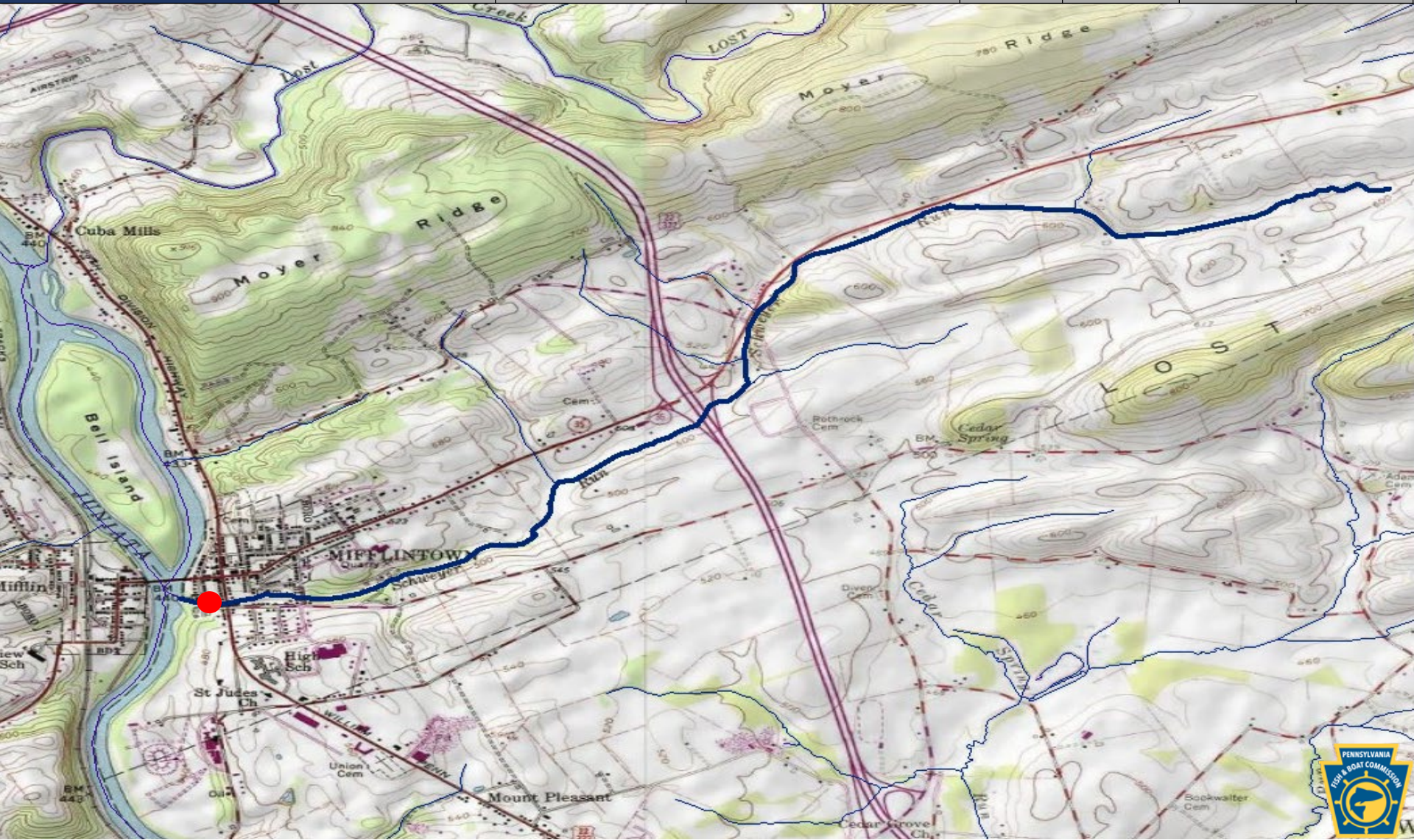




County of Mouth	Stream Name	Tributary To	Wild Trout Limits	Site River-mile ●	Species	Catch	Length (inches)
Indiana	Yellow Creek	Two Lick Creek	Headwaters to Laurel Run	17.20	Brown	44	2-16



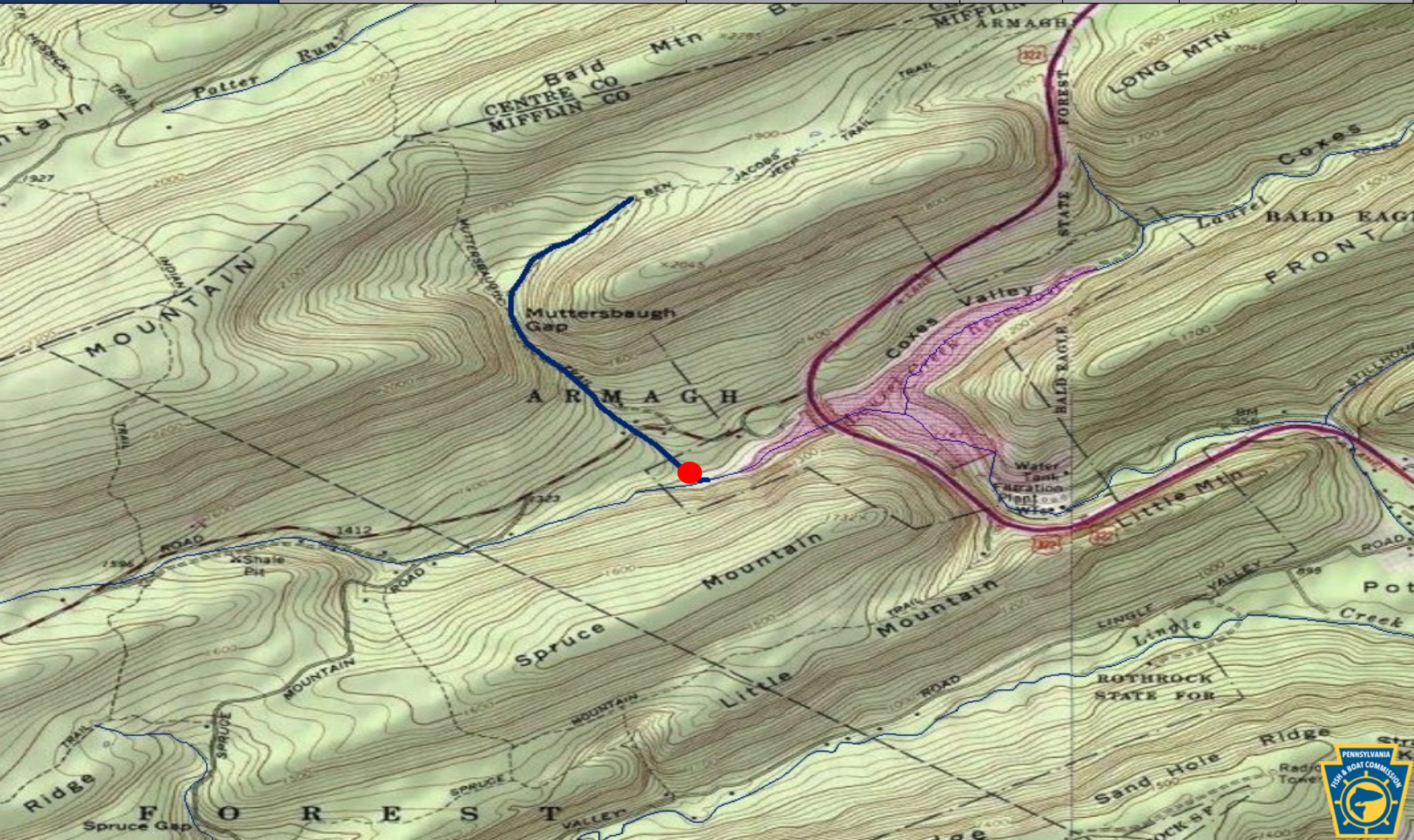
County of Mouth	Stream Name	Tributary To	Wild Trout Limits	Site River-mile ●	Species	Catch	Length (inches)
Juniata	Schweyer Run	Juniata River	Headwaters to mouth	0.08	Brown	6	2-7



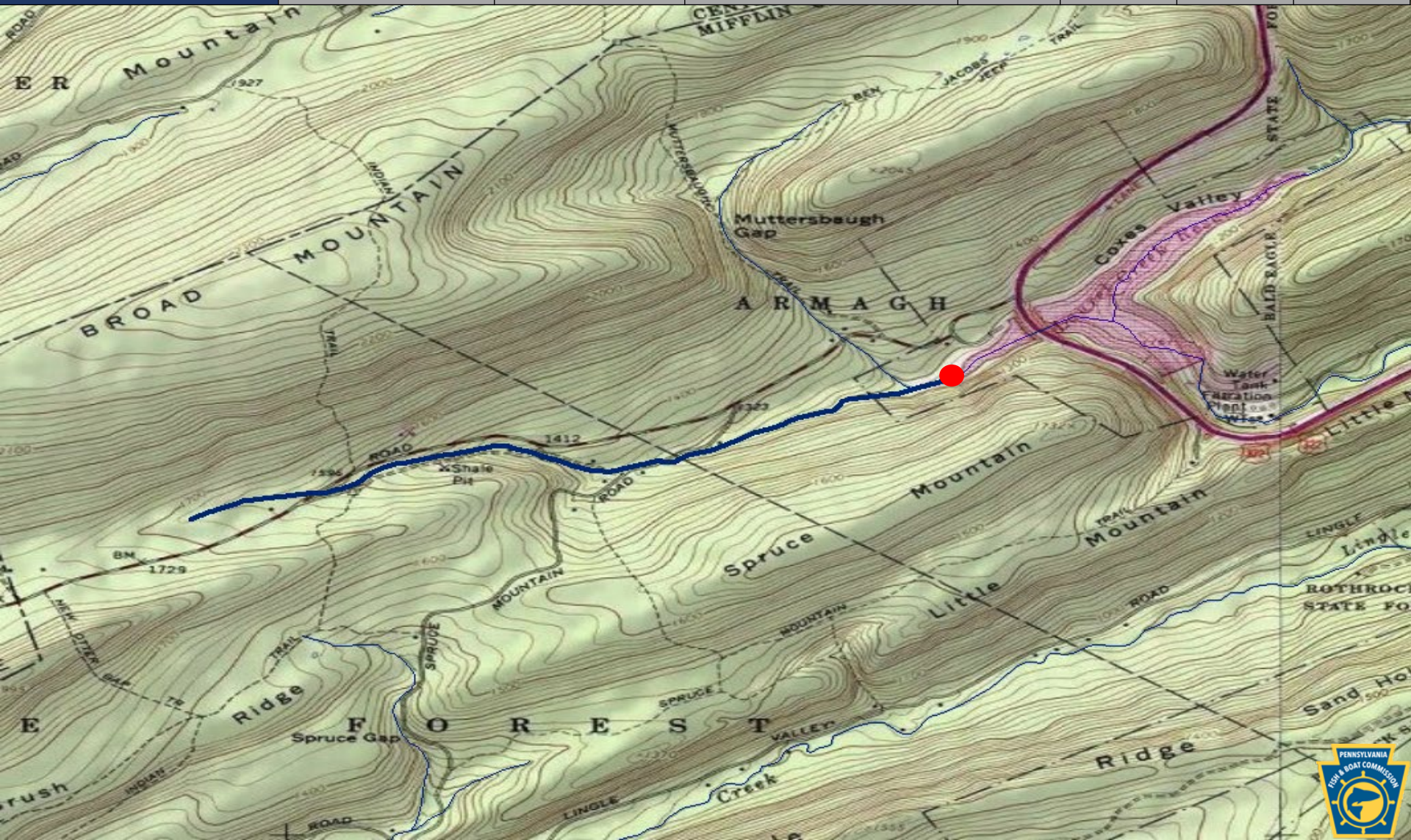
County of Mouth	Stream Name	Tributary To	Wild Trout Limits	Site River-mile ●	Species	Catch	Length (inches)
Lycoming	Lick Run	Muncy Creek	Headwaters to mouth	0.25	Brown	10	3-16



County of Mouth	Stream Name	Tributary To	Wild Trout Limits	Site River-mile ●	Species	Catch	Length (inches)
Mifflin	UNT (RM 0.08) to UNT to Laurel Creek Reservoir (RM 5.82)	UNT to Laurel Creek Reservoir (RM 5.82)	Headwaters to mouth	0.02	Brook	120	2-7



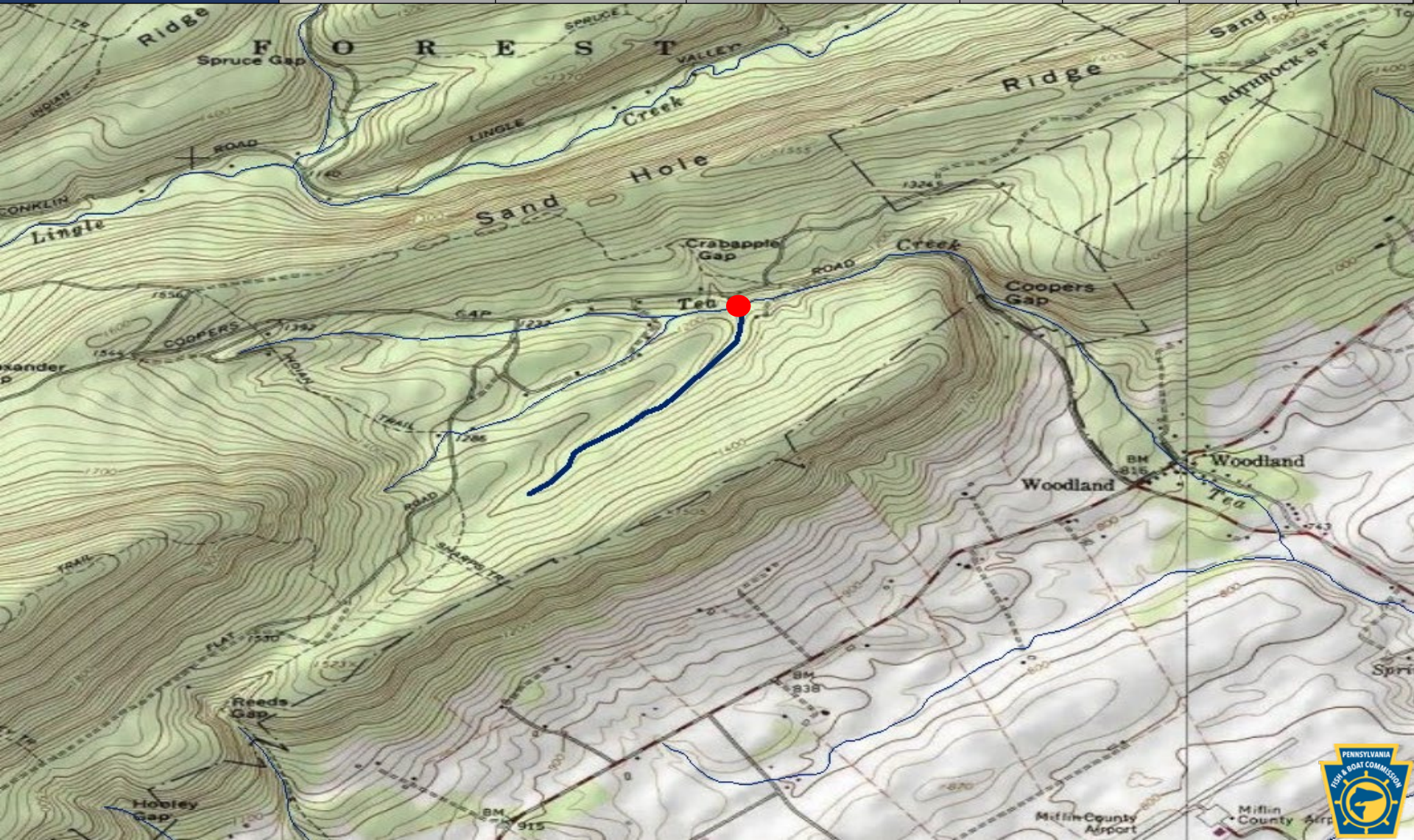
County of Mouth	Stream Name	Tributary To	Wild Trout Limits	Site River-mile ●	Species	Catch	Length (inches)
Mifflin	UNT to Laurel Creek Reservoir (RM 5.82)	Laurel Creek Reservoir	Headwaters to mouth	0.01	Brook	36	2-10



County of Mouth	Stream Name	Tributary To	Wild Trout Limits	Site River-mile ●	Species	Catch	Length (inches)
Mifflin	UNT to Lingle Creek (RM 4.06)	Lingle Creek	Headwaters to mouth	0.00	Brook Brown	17 8	2-7 2-10



County of Mouth	Stream Name	Tributary To	Wild Trout Limits	Site River-mile ●	Species	Catch	Length (inches)
Mifflin	UNT to Tea Creek (RM 4.60)	Tea Creek	Headwaters to mouth	0.01	Brook	5	2-3



County of Mouth	Stream Name	Tributary To	Wild Trout Limits	Site River-mile ●	Species	Catch	Length (inches)
Potter	Indian Shanty Run	Borie Branch	Headwaters to mouth	0.00	Brook Brown	2 13	5-7 2-4





County of Mouth	Stream Name	Tributary To	Wild Trout Limits	Site River-mile ●	Species	Catch	Length (inches)
Potter	UNT to Prouty Run (RM 3.08)	Prouty Run	Headwaters to mouth	0.11	Brook Brown	105 66	1-9 2-11



County of Mouth	Stream Name	Tributary To	Wild Trout Limits	Site River-mile ●	Species	Catch	Length (inches)
Somerset	UNT to Beaverdam Run (RM 3.34)	Beaverdam Run	Headwaters to mouth	0.00	Brook	26	1-5



County of Mouth	Stream Name	Tributary To	Wild Trout Limits	Site River-mile ●	Species	Catch	Length (inches)
Wayne	UNT (RM 0.64) to UNT (RM 0.64) to UNT to West Branch Lackawaxen River (RM 13.82)	UNT (RM 0.64) to UNT to West Branch Lackawaxen River (RM 13.82)	Headwaters to mouth	0.00	Brook Brown	2 3	2 2



County of Mouth	Stream Name	Tributary To	Wild Trout Limits	Site River-mile ●	Species	Catch	Length (inches)
Wayne	UNT (RM 2.88) to UNT to Middle Creek (RM 15.27)	UNT to Middle Creek (RM 15.27)	Headwaters to mouth	0.20	Brook	18	1-8

