

Fish Habitat Improvement Projects at Glade Run Lake and Speedwell Forge Lake



Ben Page
Division of Habitat Management



Glade Run Lake, Butler County



Glade Run Lake, Butler County

- Commonwealth purchased property in 1954
- The dam was built and the lake was formed in 1955
- Lake acreage: 52 acres
- Planned stocking: Golden Shiner, Bluntnose Minnow, Spottail Shiner, Largemouth Bass, Bluegill, Pumpkinseed, Black Crappie, Brown Bullhead Catfish, Channel Catfish, Adult Brown & Rainbow Trout, White Crappie, White Sucker

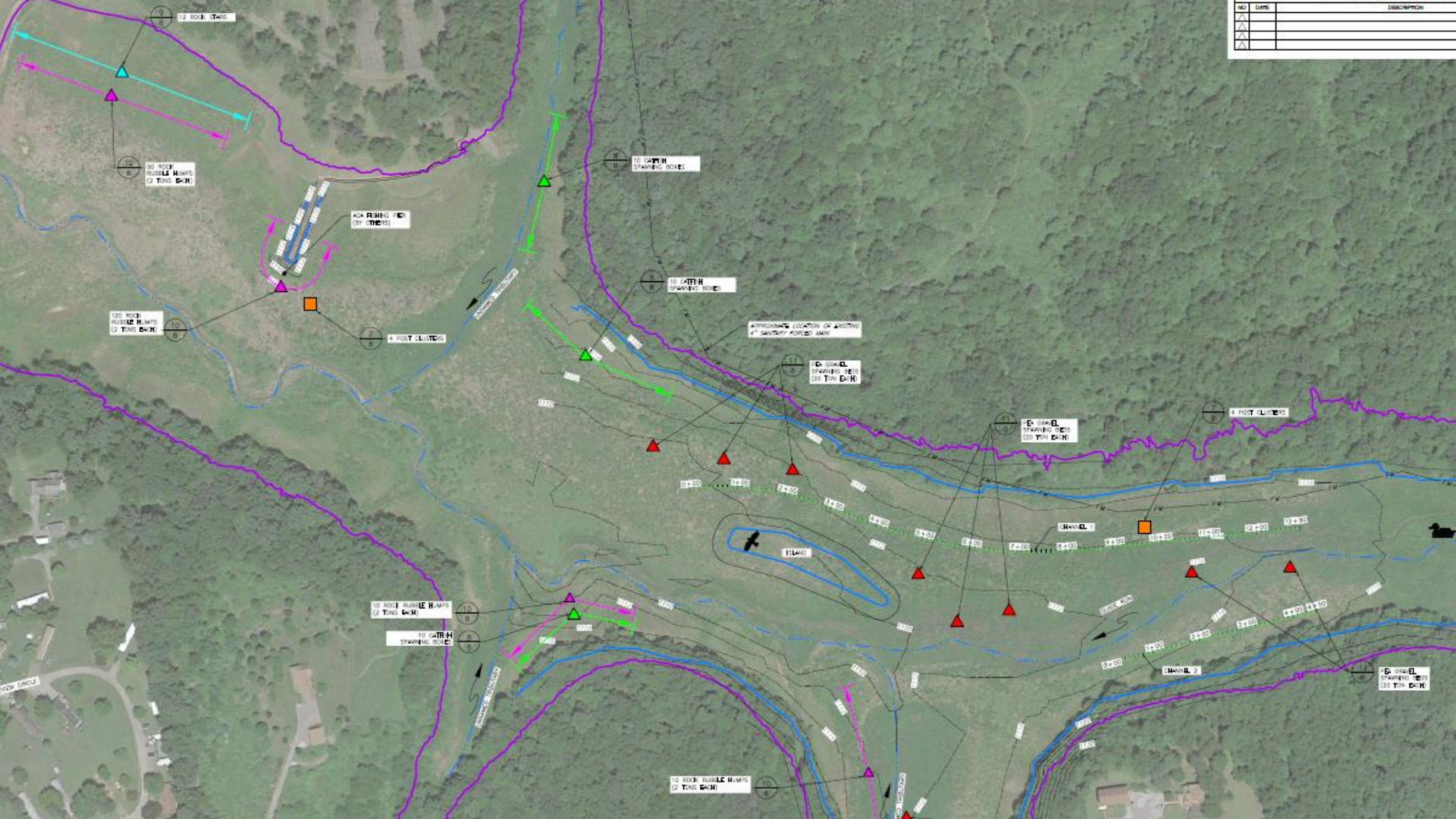


Cooperative Habitat Improvement Program (CHIP) Habitat Partners






NO.	DATE	DESCRIPTION



THIS INSET CONTOUR
 THIS INTERPOLATED CONTOUR
 FROM CURVE OF LAKE BASED ON
 7.5 NORMAL LAKE ELEVATION
 MARK LOCATION BY BEAK
 & ITS POSITION
 THIS FROM 100'-YEAR
 FLOODPLAIN
 © DUCK BOX
 THIS NEXT PLATFORM
 THIS NUMBER
 THIS NUMBER

HABITAT STRUCTURES PLAN
 SCALE IN FEET
 0 100 200

- REFERENCE:**
1. AERIAL PHOTOGRAPHY SHOWING THE DRAINED LAKE BED FROM GOOGLE EARTH PRO VERSION 8.2, IMAGERY DATE 08-14-2014.
 2. EXISTING TOPOGRAPHY WAS DEVELOPED FROM 200' INTERVAL CROSS SECTIONS BY CIVIL & ENVIRONMENTAL CONSULTANTS, INC., DATED 8-9-2014 AND MUST BE CONSIDERED APPROXIMATE. CONTOURS SHOWN ARE FOR INFORMATION PURPOSES ONLY AND MUST BE FIELD VERIFIED.
 3. LOCATION OF EXISTING SANITARY FORCE MAIN IS BASED ON HAND DRAWN 200 SCALE PROPERTY PLAN DATED JANUARY 1976 (REVISED 1983) FROM THE PENNSYLVANIA FISH COMMISSION AND MUST BE CONSIDERED APPROXIMATE. ACTUAL LOCATION OF UNDERGROUND UTILITIES MUST BE FIELD VERIFIED.
 4. EXISTING FEMA 100-YEAR ZONE A FLOODPLAIN FROM: FLOOD INSURANCE RATE MAP, TOWNSHIP OF MIDDLESEX, BUTLER COUNTY, PENNSYLVANIA, COMMUNITY PANEL 421229 0004 B, EFFECTIVE DECEMBER 1, 1983.


Civil & Environmental Consultants
 898 Baldwin Road - Pittsburgh, PA 15206
 PH: 412.426.2024 - 800.366.2004 - Fax: 412.426.2025
 www.cecinc.com

GLADE RUN LAKE CONSERVATION
GLADE RUN LAKE
FISH HABITAT IMPROVEMENT PROJECT
MIDDLESEX TOWNSHIP
BUTLER COUNTY, PENNSYLVANIA

DRAWN BY: JMS (CHECKED BY: DWP) REVISED: 04/15/2019
 DATE: APRIL 2019 (DRAWN SCALE: AS SHOWN) PROJECT:

HABITAT STRUCTURES PLAN

Glade Run Lake, Butler County





Glade Run Lake 08 Oct 2015



Post Clusters





Channel Catfish Spawning Boxes



Speedwell Forge Lake, Lancaster County

- Commonwealth purchased property in 1963
- The dam was built and the lake was formed in 1966
- Lake acreage: 106 acres
- Planned stocking: Golden Shiners, Largemouth Bass, White Crappie, Bluegill, Brown Bullhead Catfish, Channel Catfish



Cooperative Habitat Improvement Program (CHIP) Habitat Partners

**Lancaster County
Bassmasters**

Going fishing tomorrow?





Speedwell Forge Lake

Farm Pond

Blantz Rd

W Brubaker Valley Rd

Zartman Mill Rd

Speedwell

Lakeview Dr

Old Piker Rd





LUNKER LANE ↑



Channel Catfish Spawning Boxes



Channel Catfish Spawning Box Video



Project Plan Map

FISH HABITAT IMPROVEMENT PLAN
for
SPEEDWELL FORGE LAKE, LANCASTER COUNTY
by
PA FISH AND BOAT COMMISSION
DIVISION OF HABITAT MANAGEMENT

Dawn By: MBS.:PET Habitat Manager: Ben Page Date: 12/15/15

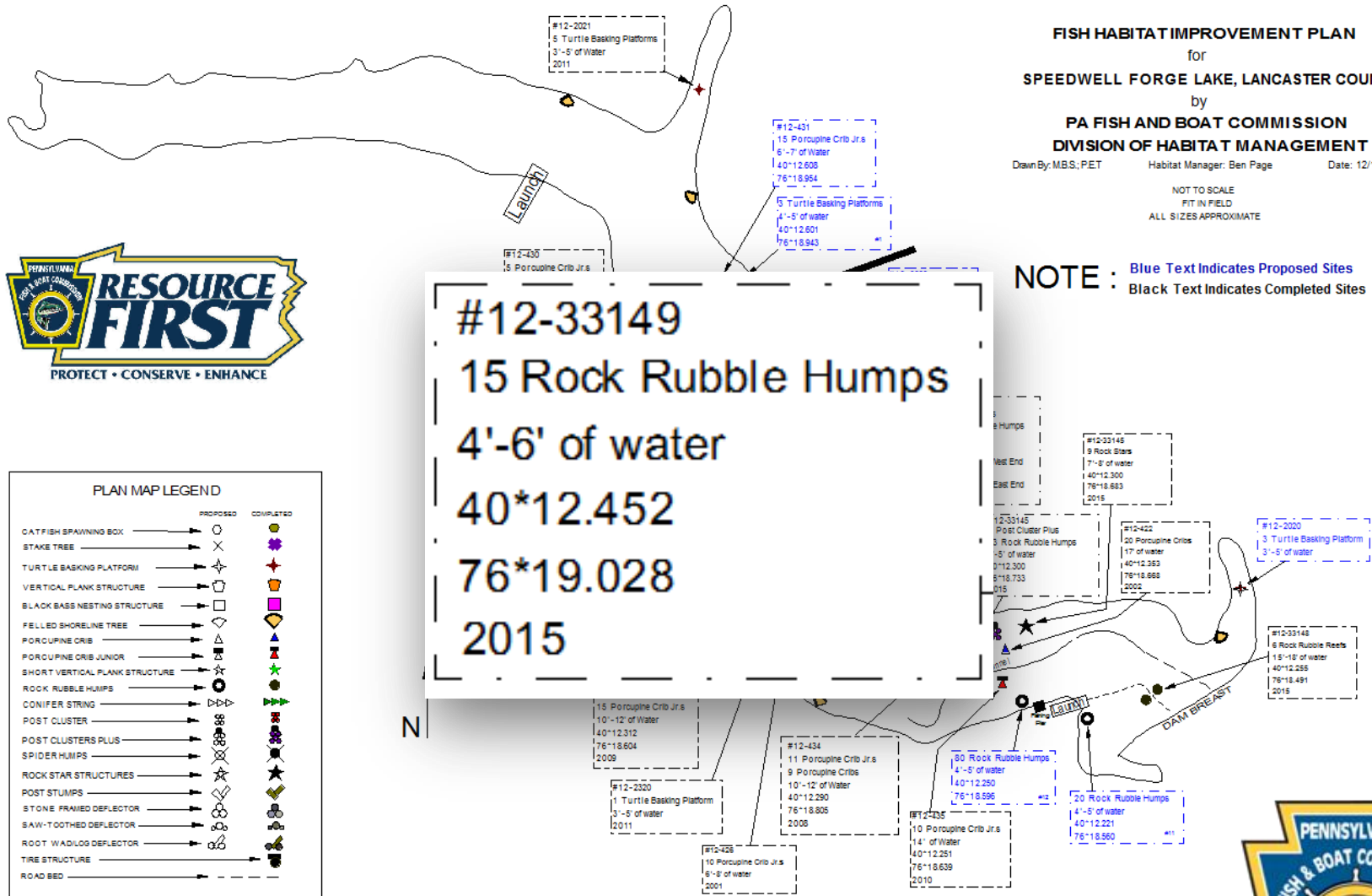
NOT TO SCALE
FIT IN FIELD
ALL SIZES APPROXIMATE

NOTE : Blue Text Indicates Proposed Sites
Black Text Indicates Completed Sites



PLAN MAP LEGEND		
	PROPOSED	COMPLETED
CATFISH SPAWNING BOX	→ ○	→ ●
STAKE TREE	→ ✕	→ ✕
TURTLE BASKING PLATFORM	→ ⬠	→ ⬠
VERTICAL PLANK STRUCTURE	→ ⬠	→ ⬠
BLACK BASS NESTING STRUCTURE	→ ⬠	→ ⬠
FELLED SHORELINE TREE	→ ⬠	→ ⬠
PORCUPINE CRIB	→ ⬠	→ ⬠
PORCUPINE CRIB JUNIOR	→ ⬠	→ ⬠
SHORT VERTICAL PLANK STRUCTURE	→ ⬠	→ ⬠
ROCK RUBBLE HUMPS	→ ⬠	→ ⬠
CONIFER STRING	→ ⬠	→ ⬠
POST CLUSTER	→ ⬠	→ ⬠
POST CLUSTERS PLUS	→ ⬠	→ ⬠
SPIDER HUMPS	→ ⬠	→ ⬠
ROCK STAR STRUCTURES	→ ⬠	→ ⬠
POST STUMPS	→ ⬠	→ ⬠
STONE FRAMED DEFLECTOR	→ ⬠	→ ⬠
SAW-TOOTHED DEFLECTOR	→ ⬠	→ ⬠
ROOT WADLOG DEFLECTOR	→ ⬠	→ ⬠
TIRE STRUCTURE	→ ⬠	→ ⬠
ROAD BED	→ ⬠	→ ⬠

#12-33149
15 Rock Rubble Humps
4'-6' of water
40*12.452
76*19.028
2015



<http://fishandboat.com/lakeplans.htm>

Questions?

Ben Page

Pennsylvania Fish & Boat Commission

Division of Habitat Management

bepage@pa.gov

