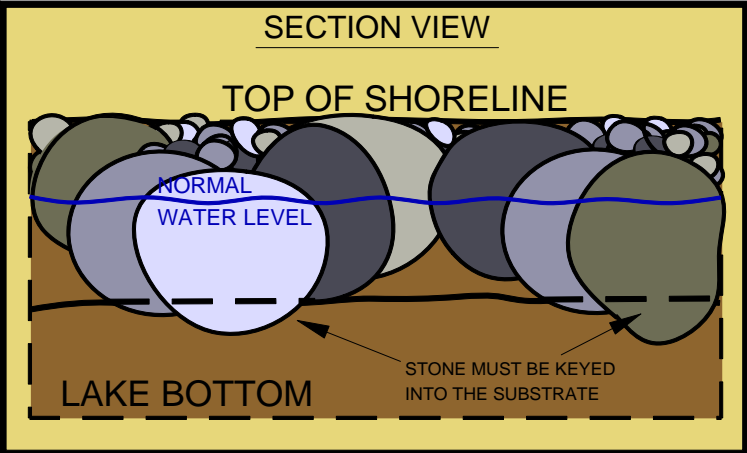
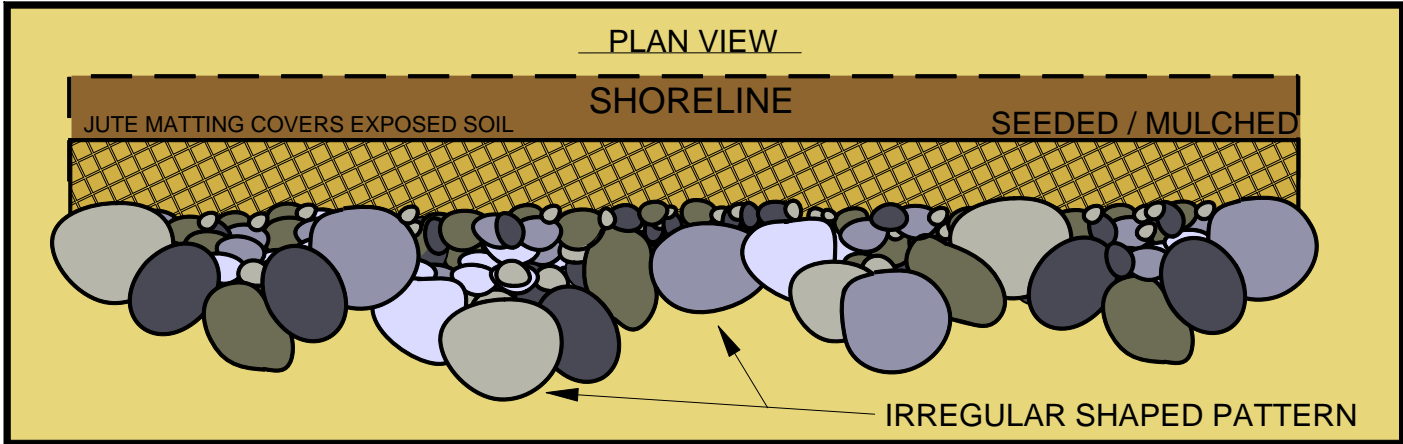
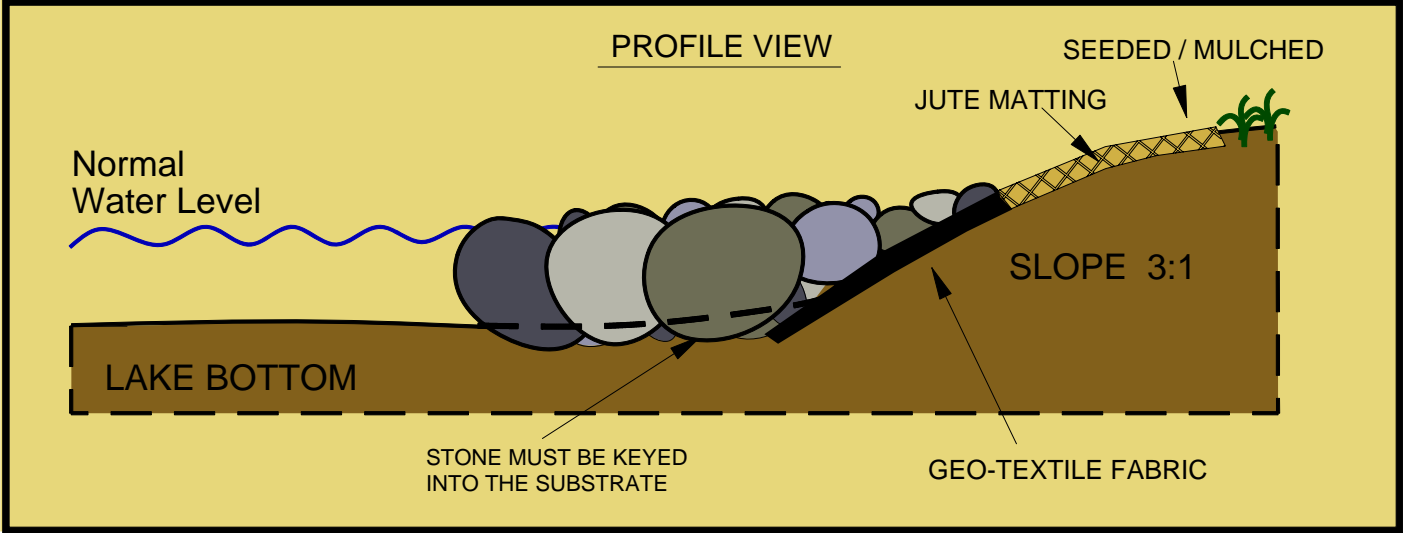


PENNSYLVANIA STYLE SAW-TOOTHED DEFLECTOR STANDARD DRAWING FOR LAKES



MATERIALS AND NOTES

MATERIALS:
R4 SANDSTONE (6"-12")
R5 SANDSTONE (9"-18")
JUTE MATTING
GEO-TEXTILE FABRIC

NOTES:
LIMESTONE CAN SUBSTITUTE SANDSTONE
DEFLECTORS ARE BLENDED INTO THE SHORELINE
JUTE MATTING WILL TEMPORARILY STABILIZE SHORE
RIPARIAN BUFFER MAY BE ESTABLISHED
NOT TO SCALE
ALL SIZES ARE APPROXIMATE
FIT IN FIELD

SUGGESTED EQUIPMENT:
EXCAVATOR WITH HYDRALIC THUMB
SKIDSTEER OR PAYLOADER