

Colver Reservoir

Cambria County

April 2017 Trap Net and May 2017 Night Electrofishing Survey

Colver Reservoir is a 73-acre impoundment located in Cambria County just north of the town of Colver. The lake is owned by the Cambria Township Water Authority and recreational fishing is managed by the Pennsylvania Fish and Boat Commission (PFBC). Statewide regulations are in effect for Colver Reservoir for all species. Boats with electric motors only are permitted on the lake and both ice and night fishing are not permitted.

PFBC biologists surveyed the lake in April 2017 with 8 trap net sets to assess the panfish populations. Biologists then returned in May 2017 to perform Night Flatbottom Boat Electrofishing to assess the Largemouth Bass population.

As in the [previous trap net survey in 2008](#), the same eleven species were captured trap netting. Yellow Perch were the most abundant species captured followed by Bluegill. Walleye were the most abundant gamefish species captured in trap nets. Water temperatures at the time of survey were too warm to adequately sample the Walleye population. Table 1 summarizes the trap net catch.

Table 1. Length and frequency distribution of sampled fish.

Species	Number caught	Size range (inches)	Comments
Walleye	11	12 – 29"	82% legal size
Saugeye	1	22"	
Largemouth Bass	3	10 – 13"	
Yellow Perch	512	4 – 13"	94% over 9 inches
Bluegill	155	3 – 9"	95% over 7 inches
Black Crappie	50	6 – 12"	82% over 9 inches
Pumpkinseed	6	5 – 9"	
Yellow Bullhead	49	7 – 13"	
Brown Bullhead	12	12 – 16"	
Golden Shiner	3	Not Measured	
White Sucker	43	Not Measured	

Walleye catch was lower in 2017 than 2008 but quality sized fish are available (Figure 1). Water temperatures at the time of survey were near 60°F, which are well past optimal temperatures for sampling for Walleye. Sizes of Walleye ranged from 12 inches to just under 30 inches.

Colver Reservoir contains high quality panfish populations. Our trap net catch of Yellow Perch and Bluegill were particularly impressive, with almost 14 times as many Yellow Perch captured in 2017 compared to 2008 (Figure 2) and almost twice as many Bluegill (Figure 3). Even more impressive were the sizes of the fish captured. Yellow Perch averaged 10 – 11 inches and Bluegill averaged 8 – 9 inches. Although lower numbers were captured, Black Crappie sizes were also impressive. The majority of the Black Crappie captured were between 11 and 12 inches in length.

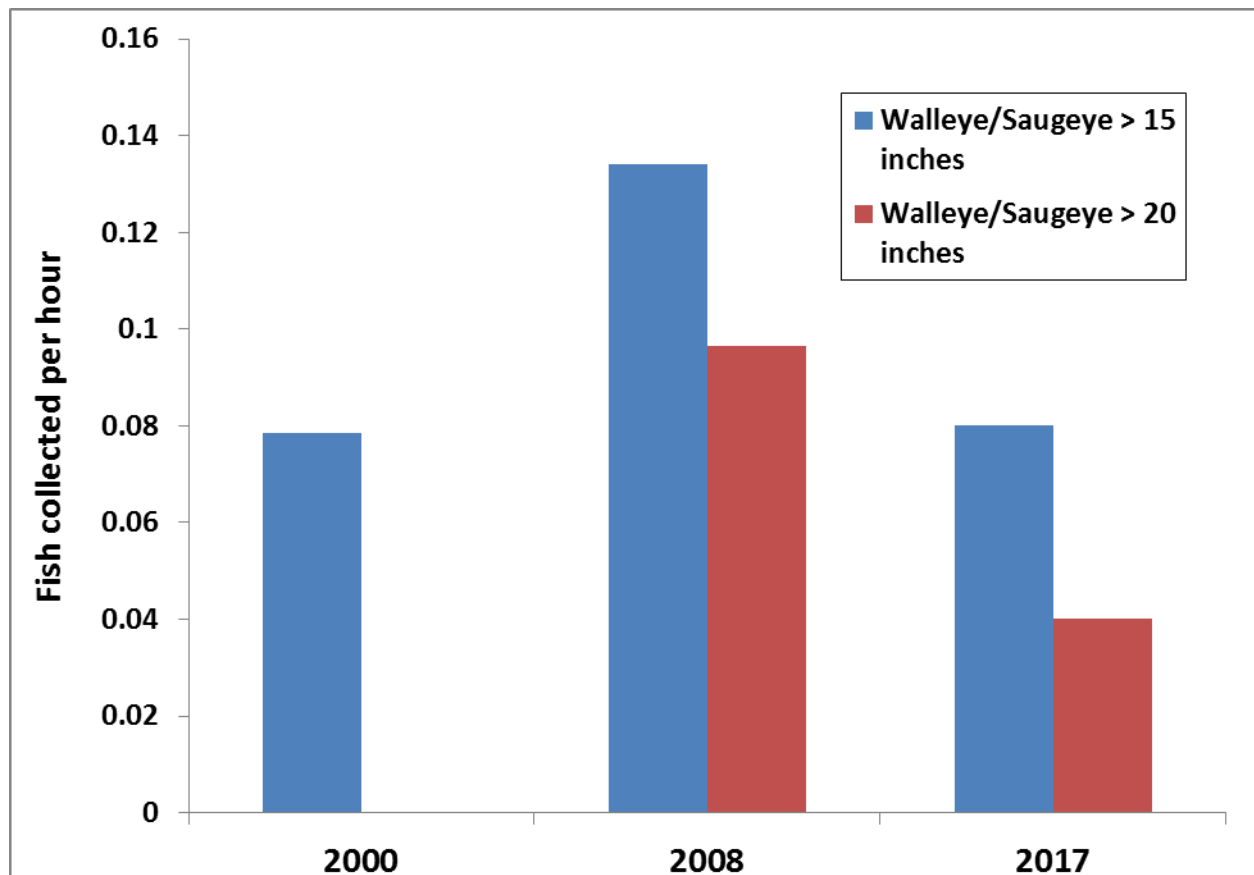


Figure 1. Walleye and Saugeye trap net catch from Colver Reservoir.



Twenty-nine inch Walleye captured trap netting at Colver Reservoir

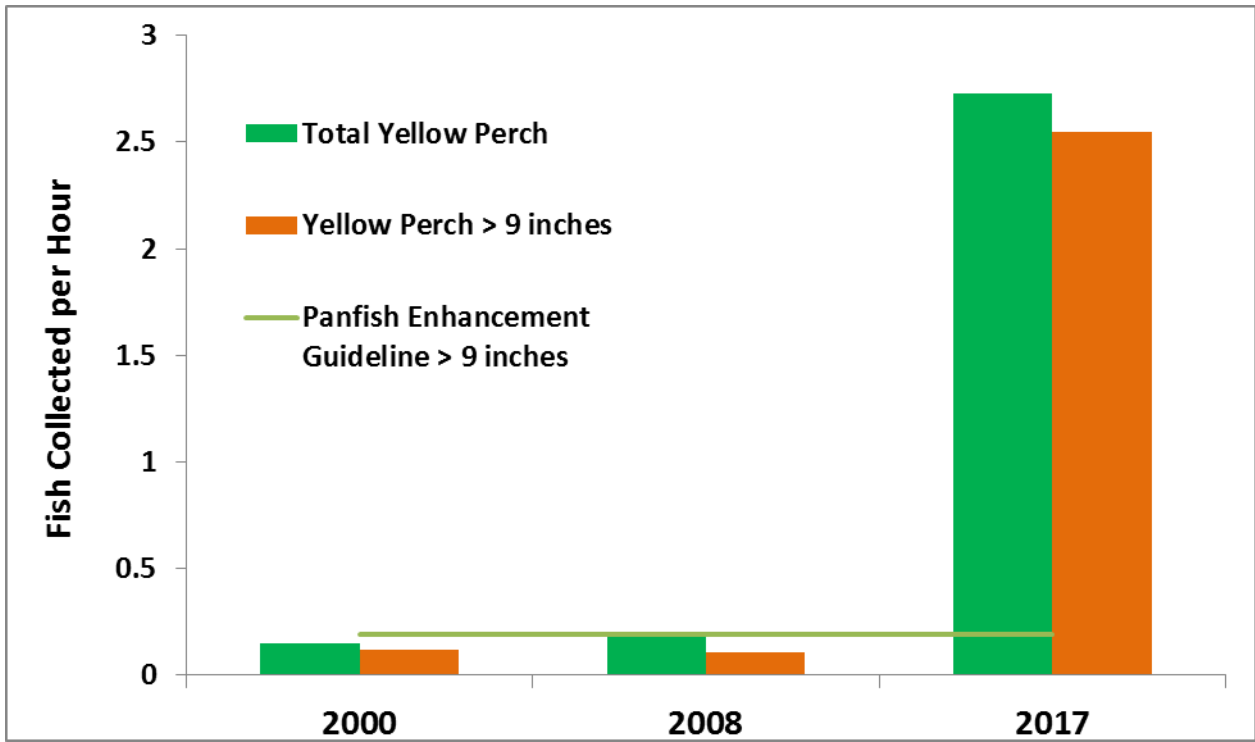


Figure 2. Yellow Perch trap net catch at Colver Reservoir.

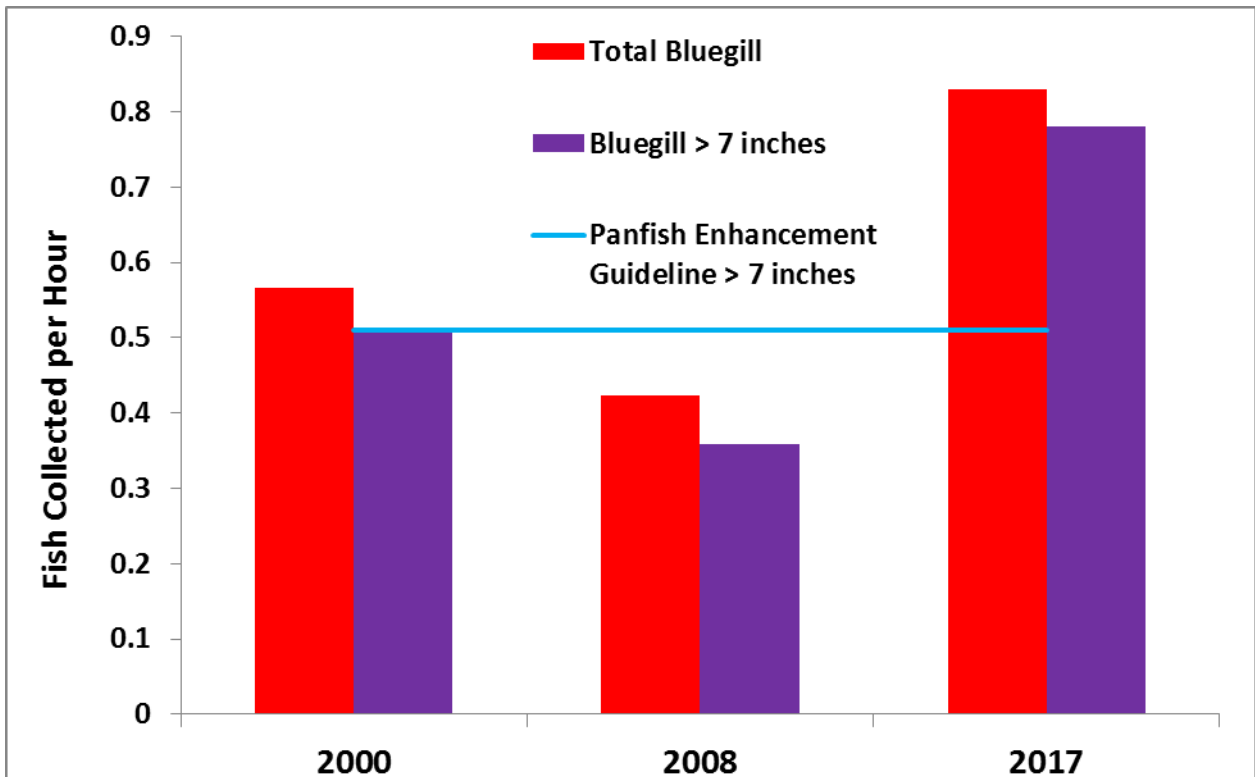


Figure 3. Bluegill trap net catch at Colver Reservoir.



A tub full of Yellow Perch about to be processed



A couple of typical sized 11-inch Black Crappie captured at Colver Reservoir

Night electrofishing was performed in early May 2017 to assess the Largemouth Bass population. A total of 147 bass were captured ranging in size from 3 to 20 inches (Table 2). Of the 147 bass, 41% were over 12 inches in length and 2% were over 15 inches in length. PFBC guidelines for Big Bass Regulations were exceeded at Colver Reservoir with bass over 12 inches collected at a rate of 44 per hour (state guideline 7 per hour) and bass over 15 inches collected at a rate of 3 per hour (state guideline 2 per hour.) Both of these numbers were higher than in the 2000 survey. Fish over 12 inches were collected at a rate similar to the previous survey in 2009 and a slight decline was seen in the rate of fish over 15 inches collected per hour (Figure 4). No Walleye or Saugeye were collected electrofishing in 2017.

Table 2. Length and frequency distribution of Largemouth Bass from night electrofishing

Species	Number caught	Size range (inches)	Comments
Largemouth Bass	147	3 - 20"	41% over 12 inches 2% over 15 inches

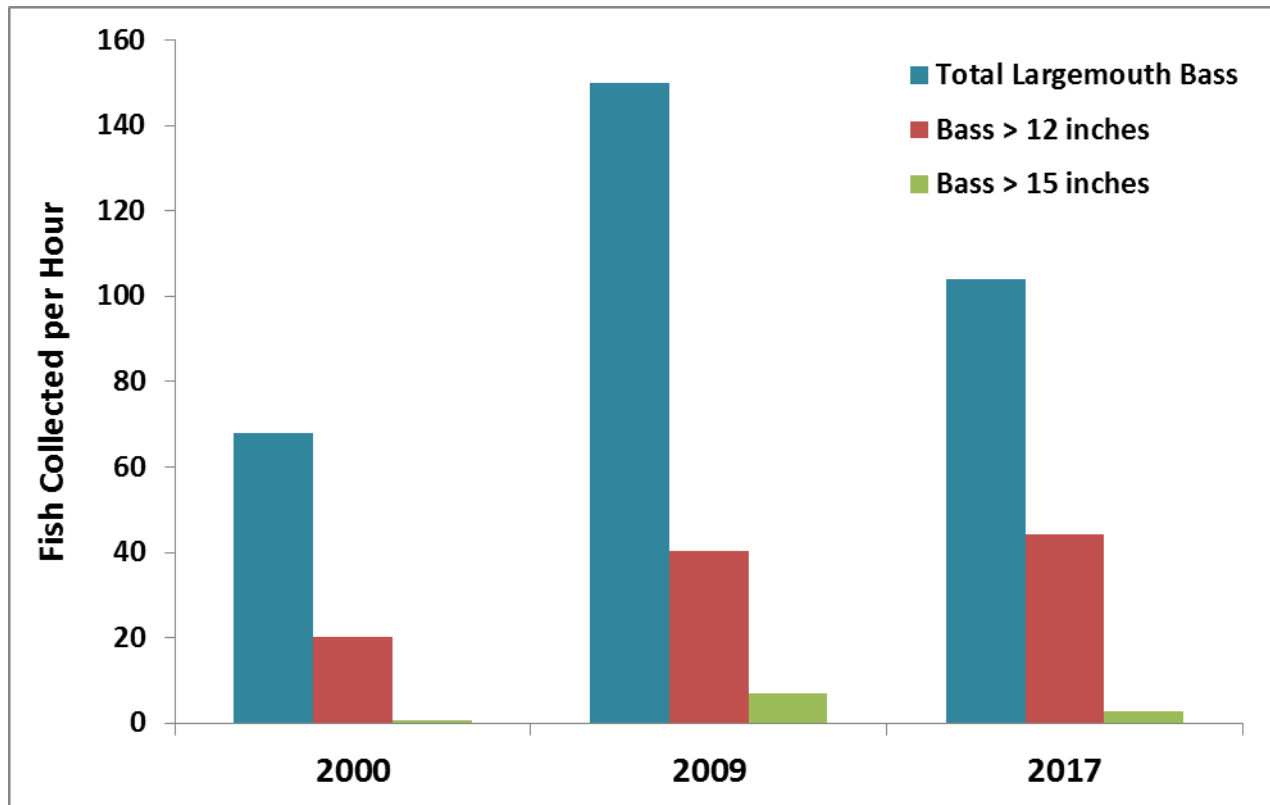


Figure 4. Largemouth Bass catch from night electrofishing at Colver Reservoir.

Overall, Colver Reservoir provides excellent fishing opportunities for quality sized Yellow Perch, Bluegill, and Black Crappie. Good numbers of Largemouth Bass are present, with abundant numbers of fish in the 12 to 14" size range. Walleye are also present, with some trophy sized fish available to anglers.

*Mike Depew
Area 8 Fisheries Biologist*