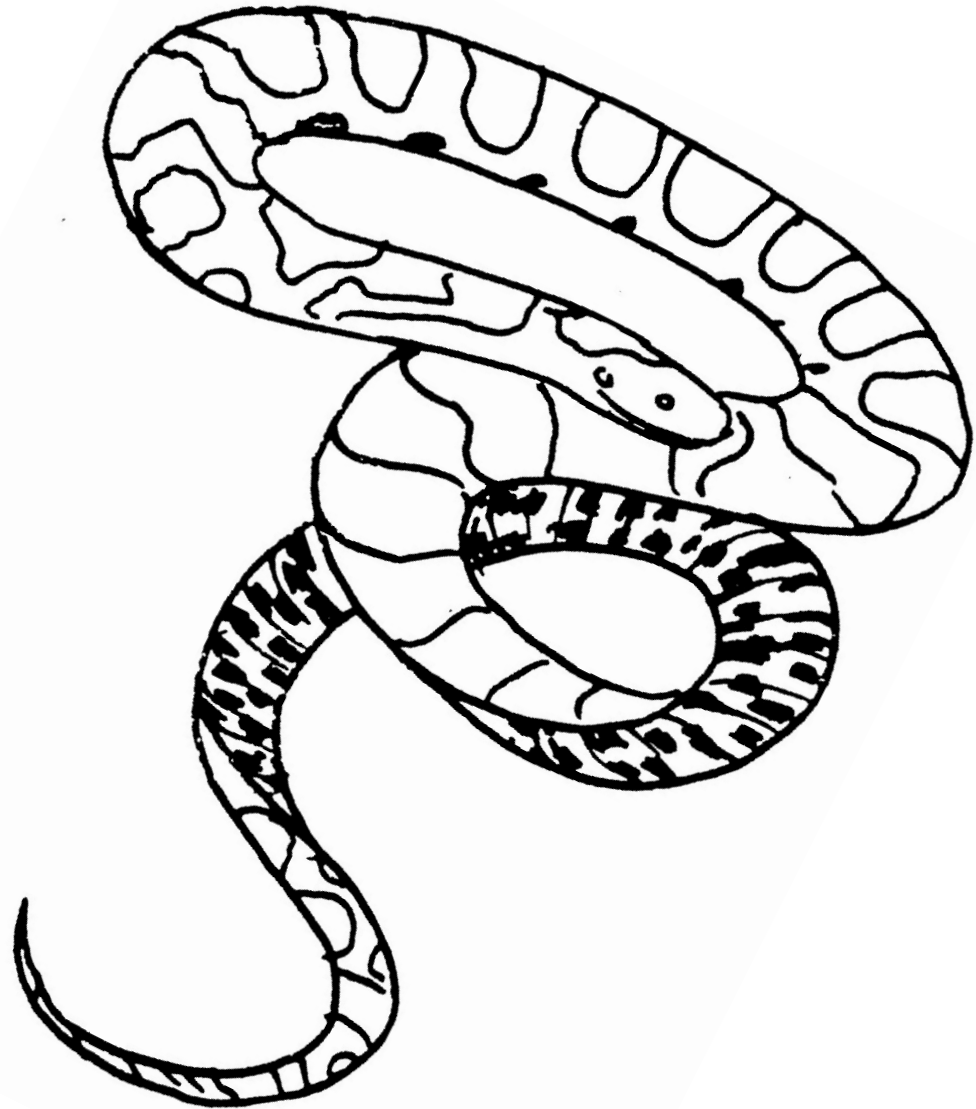




PA's Amphibian and Reptile Coloring Series

Eastern Milksnake



All About Me: Hello! I am an Eastern Milksnake. We don't milk cows, but we do hunt for mice around barns! We can grow from two to over four feet long. We are sometimes mistaken for copperheads and, sadly, killed for that reason. Copperheads have heads with the distinct copper color and without marks. We have heads that are a light color with brown marks and a Y or V-shaped mark on our necks. Copperheads have dark bands that are narrow across the back and wider at the sides. Our upper bodies are gray or tan with brown or red-brown blotches that cross over our backs and sides. Our blotches are widest across our backs and narrow on the sides and are outlined in black. We have smaller blotches on our sides, too. Our most important identifying characteristic is on our bellies. Our bellies are white with dark, square splotches that create a checkerboard effect. We live in all of PA's 67 counties. We live in many different habitats around towns, rural areas, lowlands, meadows, pine & deciduous forests, and rocky hillsides. We hide around logs and even damp trash piles are a place for us to hide. Our favorite food is small rodents, especially mice. We also eat other snakes, lizards, and birds.